

APPENDIX



Prepared By:
MILCO
Environmental
Services, Inc.
 1111 Central Ave.
 Kearney, Ne. 68847
 Tel: 308-234-5923
 Fax: 308-234-1146



Note:
 1. Aerial Photography by Nebraska
 Department of Natural Resources
 flown in 2003.

Figure 1
Vicinity Map
 Lexington, Nebraska



7/27/2011 11:23:24 AM Path: O:\Projects\M127\M127-G1-100\GIS\Area Map.mxd

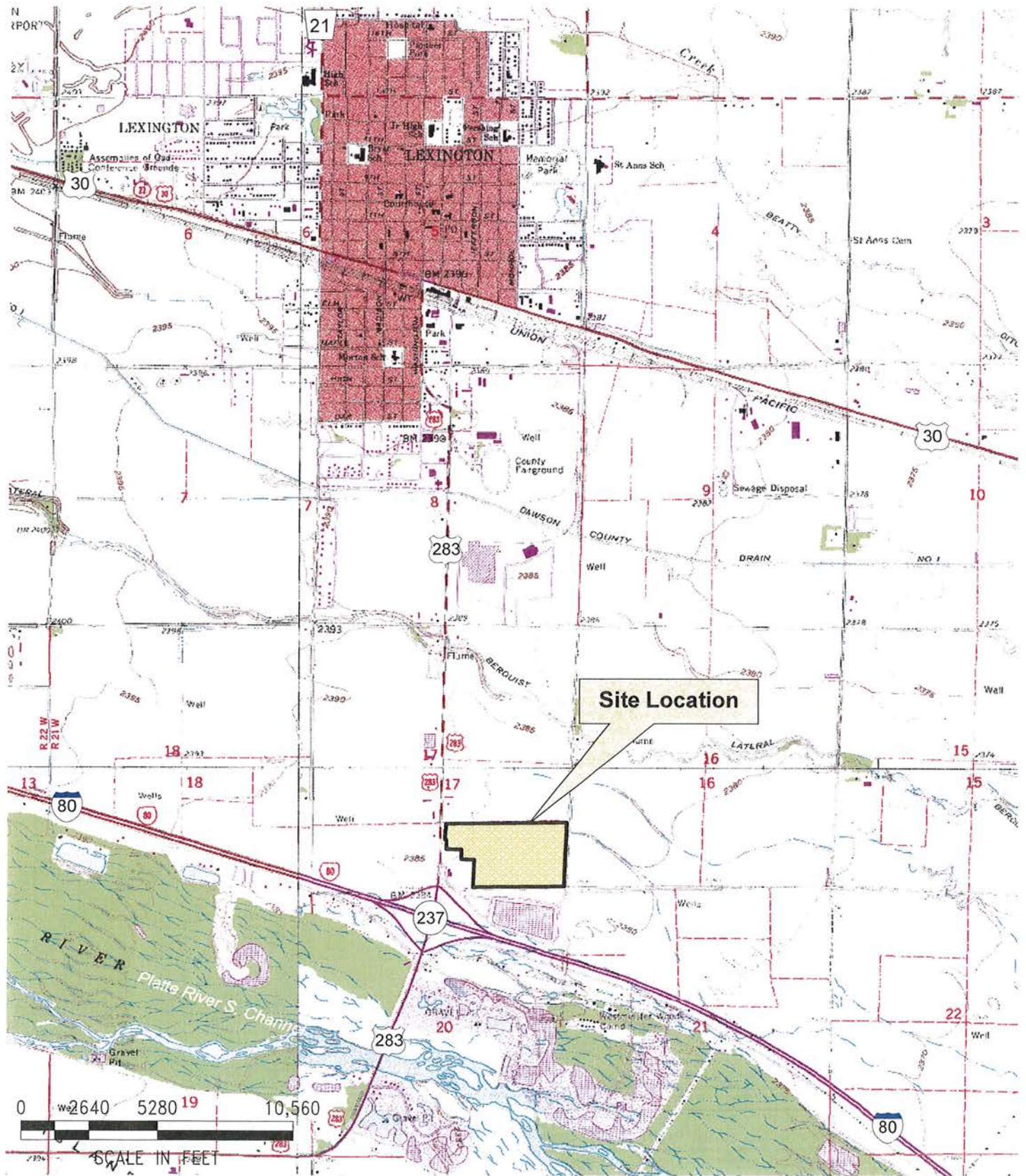
Prepared By:
MILCO
Environmental
Services, Inc.
 109 East 2nd St.
 McCook, NE 69001
 Tel: 308-345-4741
 Fax: 308-345-7370



Note:

1. Aerial Photography acquired from:
 ESRI, i-cubed, USDA FSA, USGS, AEX, GeoEye,
 Getmapping, Aerogrid, IGP

Figure 2
Area Map
 Lexington, Nebraska

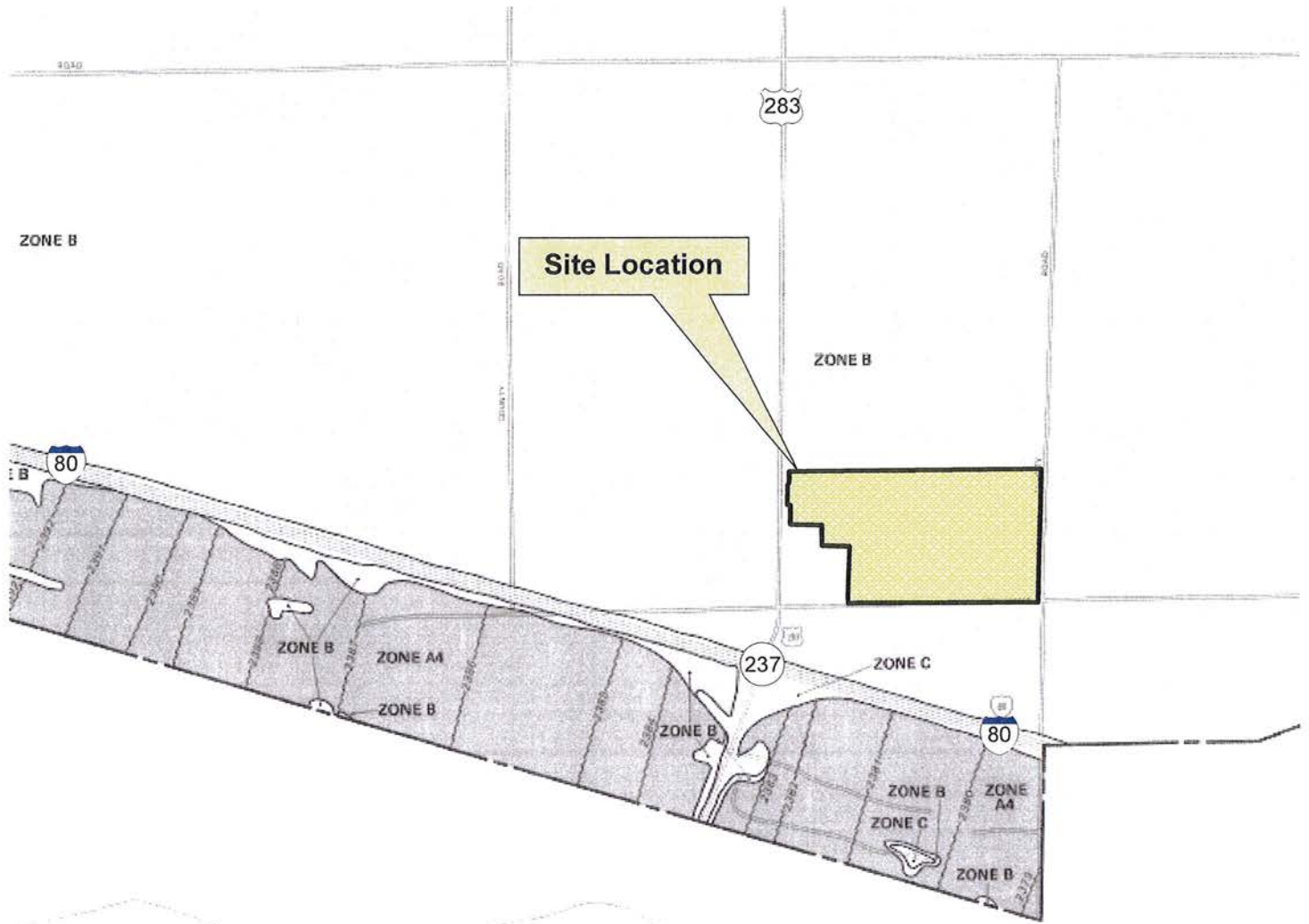


Prepared By:
MILCO
Environmental
Services, Inc.
 1111 Central Ave.
 Kearney, Ne. 68847
 Tel: 308-234-5923
 Fax: 308-234-1146



Note:
 1. USGS Map acquired from
 DeLorme 3-D TopoQuads 1999.

Figure 3
USGS Map
 Lexington, Nebraska



NATIONAL FLOOD INSURANCE PROGRAM
FIRM
 FLOOD INSURANCE RATE MAP
 CITY OF LEXINGTON, NEBRASKA (UNINCORPORATED)
 PANEL 10 OF 10
 COMMUNITY PANEL NUMBER 310063 0010 A
 EFFECTIVE DATE: MAY 15, 1984
 Federal Emergency Management Agency



Prepared By:
MILCO
Environmental
Services, Inc.
 1111 Central Ave.
 Kearney, Ne. 68847
 Tel: 308-234-5923
 Fax: 308-234-1146



Note:
 1. Flood Insurance Rate Map-
 Community Panel No. 310063 0010 A
 (May 15, 1984)

Figure 4
Flood Insurance
Rate Map
 Lexington, Nebraska

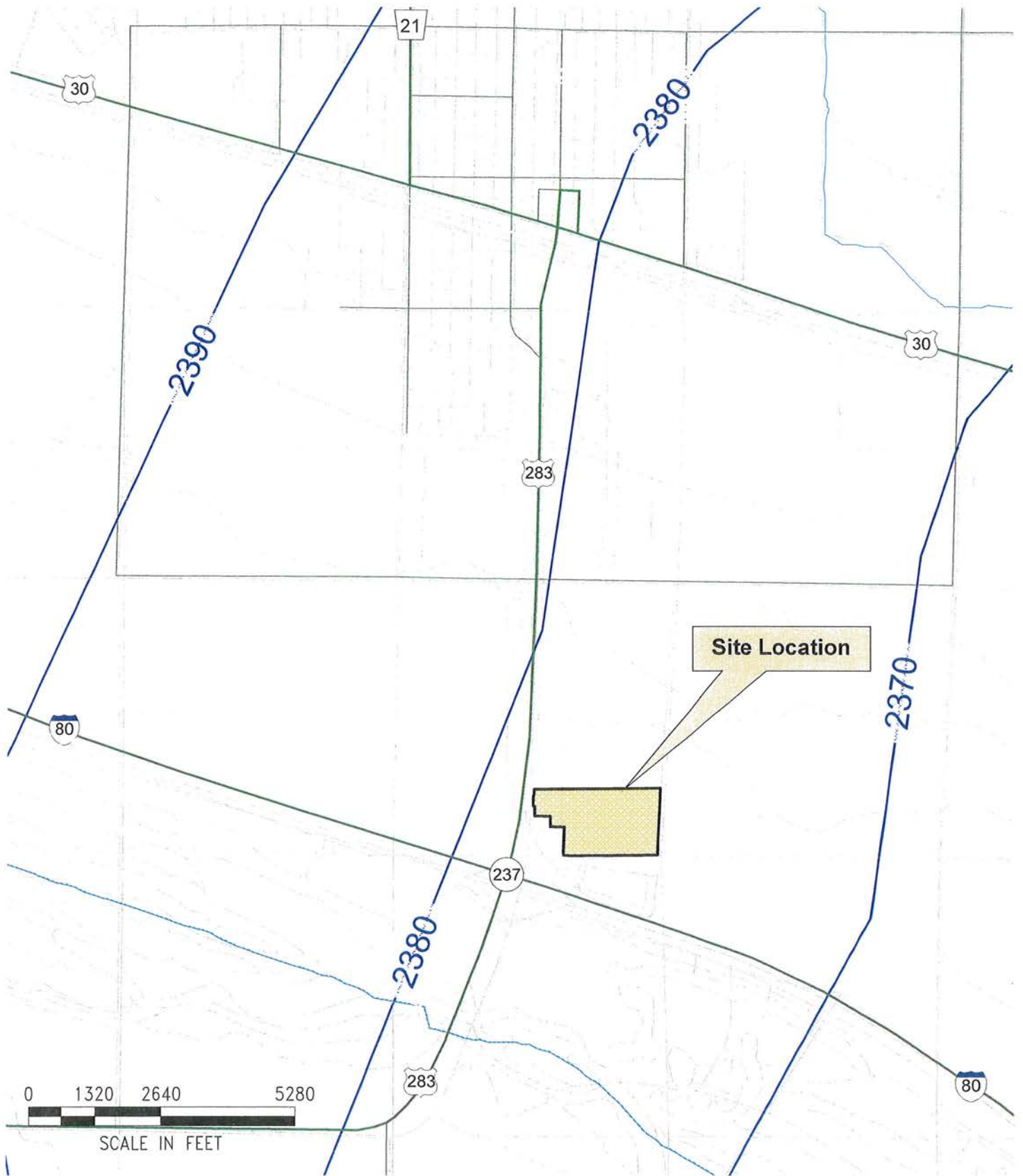
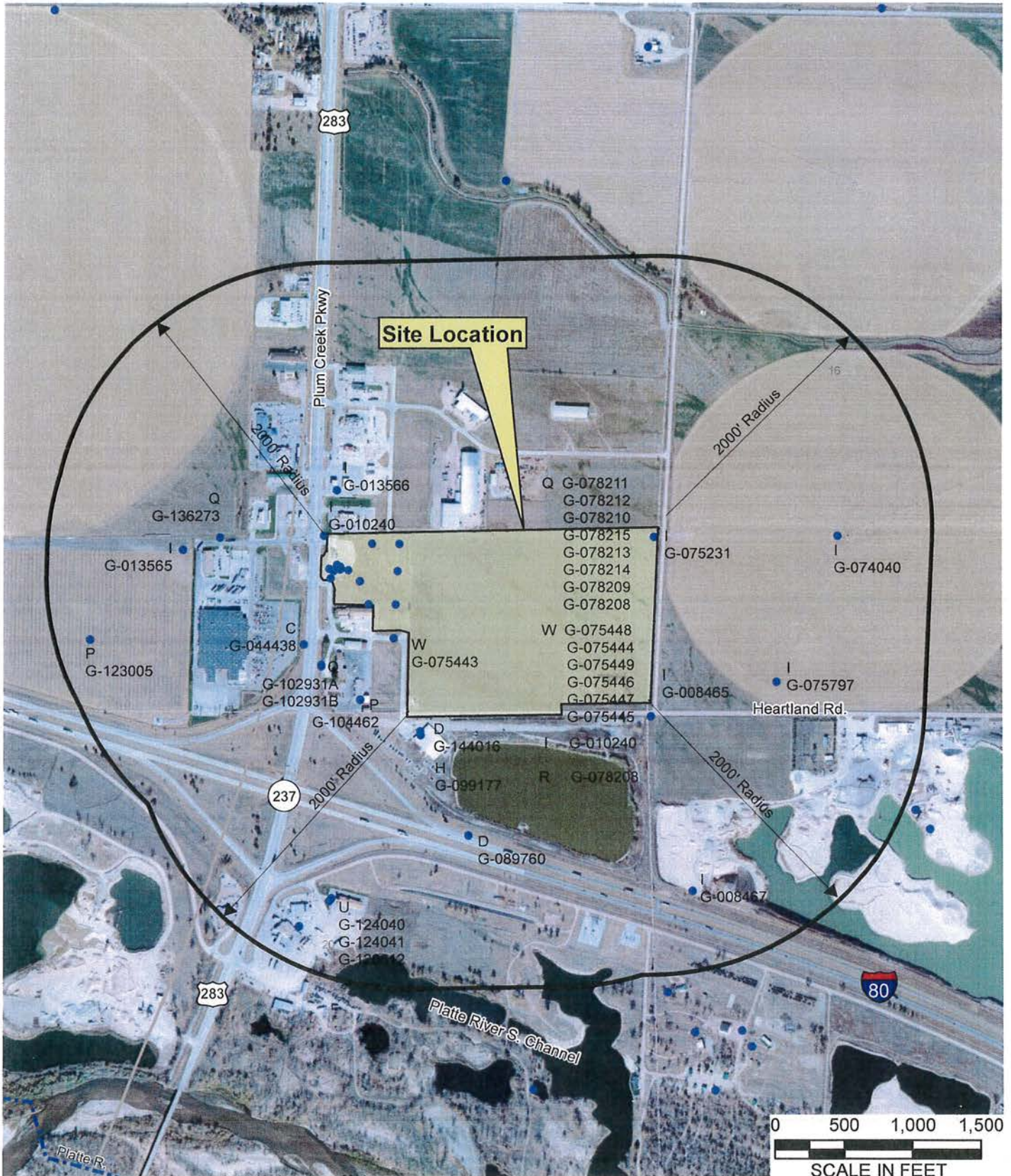


Figure 5
Groundwater
Contour Map
 Lexington, Nebraska

Prepared By:
MILCO
Environmental
Services, Inc.
 1111 Central Ave.
 Kearney, Ne. 68847
 Tel: 308-234-5923
 Fax: 308-234-1146



Note:
 Groundwater contours were digitized from the "Configuration of the Water Table, Spring 1995, Lexington East Quadrangle, Nebraska" developed by the U.S. Geological Survey.



7/27/2011 10:59:34 AM Path: O:\Projects\M12\NM127-G1-100\GIS\Reg Well.mxd

- Note:**
1. Aerial Photography acquired from: ESRI, i-cubed, USDA FSA, USGS, AEX, GeoEye, Getmapping, Aerogrid, IGP
 2. Registered well information provided by the Nebraska Department of Natural Resources, June, 2010.
 3. Registered well locations are positioned from well registration forms. Some errors may exist due to data input and inaccuracies within registration records.

Prepared By:
MILCO
Environmental
Services, Inc.
 109 East 2nd St.
 McCook, NE 69001
 Tel: 308-345-4741
 Fax: 308-345-7370

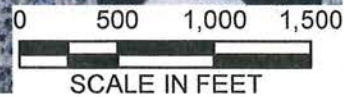
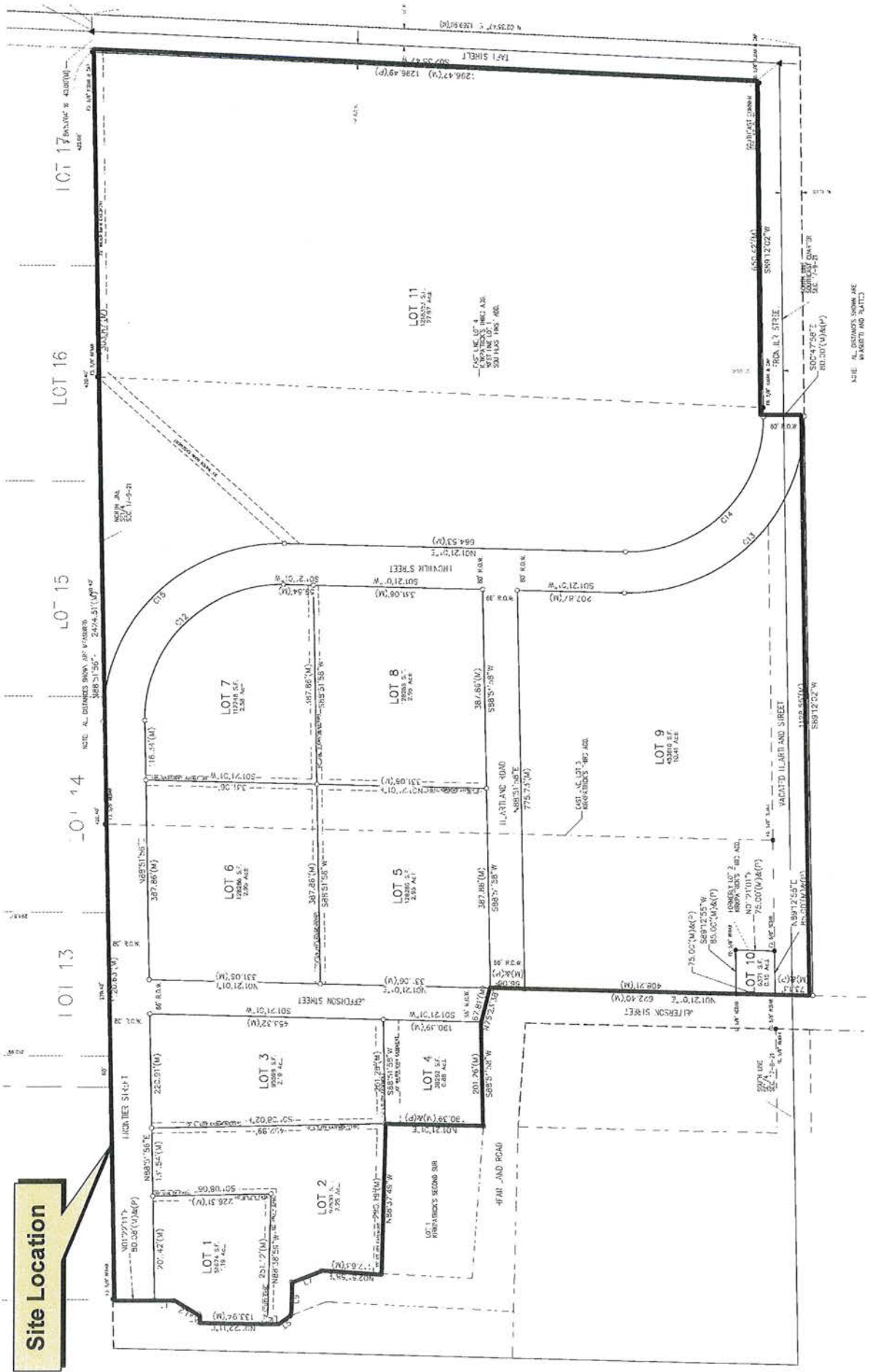


Figure 6
Registered
Well Map
 Lexington, Nebraska

Site Location



NOT TO SCALE

Prepared By:
MILCO
 Environmental
 Services, Inc.
 1111 Central Ave.
 Kearney, Ne 68847
 Tel: 308-234-5923
 Fax: 308-234-1146

Figure 7
Plat Map
 Lexington, Nebraska