

**City of Lexington, Southeast Addition Infrastructure Improvements, July 19,  
2011 Phase I Captioned Photos**

**1. Camera #'s 31 through 34 follow:**

**#31 Looking north along the west side of Taft Street from the northeast corner of Lot 11.**



**#32 Looking south along the west side of Taft Street from the northeast corner of Lot 11.**



**#33 Looking east across Taft Street from the northeast corner of Lot 11.**



**#34 Looking west along the northern boundary of Lot 11 (apparently follows electrical power lines poles) from the northeast corner of Lot 11.**



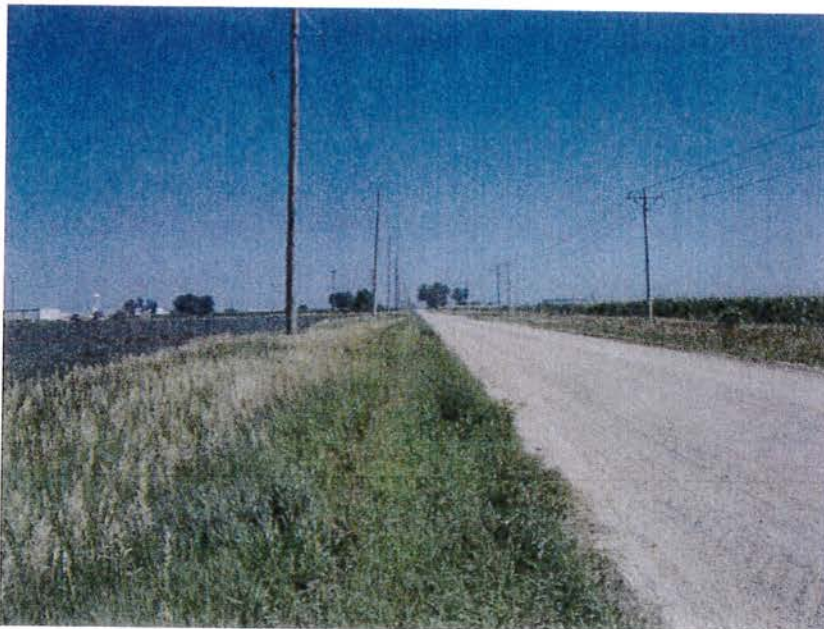


**2. Camera # 35 Irrigation Well at the northeast corner of Lot 11 of the Property**



**3. Camera #'s 36 through 39 follow:**

**#36 Looking north along the west side of Taft Street from about the middle of the east side of Lot 11.**



**#37 Looking south along the west side of Taft Street from about the middle of the east side of Lot 11.**



**#38 Looking east across Taft Street from about the middle of the east side of Lot 11.**





**#39 Looking west across Lot 11 and Subject Property from about the middle of the east side of Lot 11.**



**4. Camera #'s 40 through 43 follow:**

**#40 Looking north along the west side of Taft Street from the southeast corner of Lot 11.**



**#41 Looking south across Frontier Road from the southeast corner of Lot 11.**



**#42 Looking east across Taft Street toward the eastward continuation of Frontier Road from the southeast corner of Lot 11.**





**#43 Looking west along Frontier Road and the southern boundary of the Subject Property from the southeast corner of Lot 11.**



**5. Camera # 44 Four inch drilled well that has not apparently been used with just capped casing above ground at what appears to be an old homestead from the clump of trees seen in the previous Camera # 43 photo within the area near the southeast corner of Lot 11 of the Subject Property**



6. Camera # 45 Looking north from the south side of Frontier Road at what appears to be an old homestead from the clump of trees seen in the previous Camera # 43 photo and this photo, within the area near the southeast corner of Lot 11 of the Subject Property.



7. Camera #'s 46 through 49 follow:



**#46 Looking north, from about the middle of the South Property Line of Lots 9 and 11, along the west side of Lot 11 and the proposed north – south route of Frontier Road.**



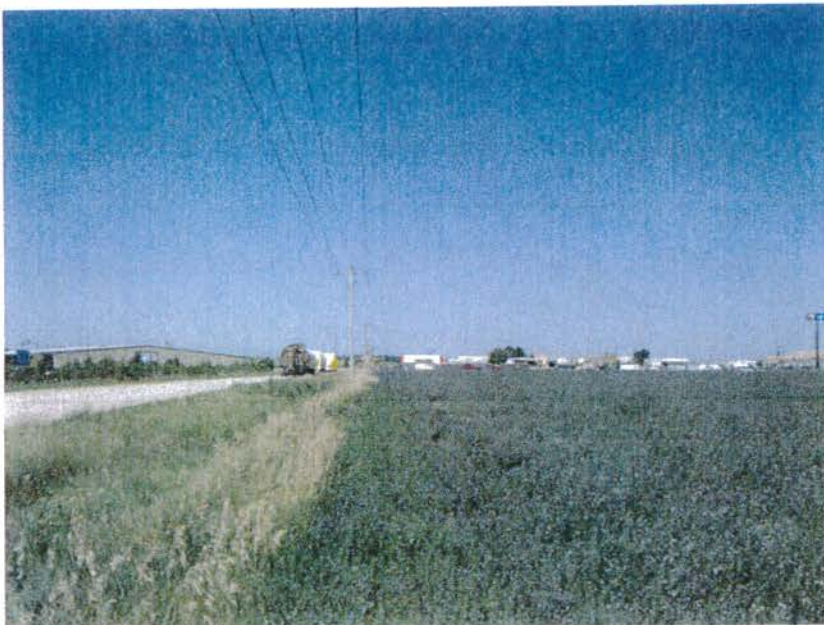
**#47 Looking south, from about the middle of the South Property Line of Lots 9 and 11, and from the north side of what is presently Heartland Road to merge with the new extension of Frontier Road.**



**#48 Looking east, from about the middle of the South Property Line of Lots 9 and 11, and from the north side of what is presently Heartland Road to become the new eastward continuation of Frontier Road. One can see in the background the clump of trees representing what has been classified as an old homestead in Camera #'s 43 and 45 photos above.**



**#49 Looking west, from about the middle of the South Property Line of Lots 9 and 11, and from the north side of what is presently Heartland Road to where it intersects with Jefferson Street.**





8. Camera #'s 50 through 53 follow:

#50 Looking north, from southwest corner of Lot 9 and the Subject Property Line, from the intersection of Heartland Road and Jefferson Street.



**#51 Looking south, from southwest corner of Lot 9 and the Subject Property Line, from the intersection of Heartland Road and Jefferson Street toward the military vehicle museum.**



**#52 Looking east, from just north of the southwest corner of Lot 9 and the Subject Property Line; from the south side of the Public Well # 15, Lot 10 well house near the intersection of Heartland Road and Jefferson Street.**





**#53 Looking west, from just north of the southwest corner of Lot 9 and the Subject Property Line; from the south side of the Public Well # 15, Lot 10 well house near the intersection of Heartland Road and Jefferson Street.**



**9. Camera # 54 Public or Municipal Supply Well # 15, Lot 10 near the southwest corner of Lot 9 and the Subject Property Line; and near the intersection of Heartland Road and Jefferson Street.**



10. Camera # 55 Transformers with no informative labeling, just a number "37.5" on one. The transformers are located near and just east of the southwest corner of Lot 9 and the Subject Property Line.



11. Camera # 56 Transformers with no informative labeling. The transformers are located about 80 yards east of the southwest corner of Lot 9 and the Subject Property Line.





**12. Camera # 57 Two monitoring wells south of the southwest corner of Lot 4 on the south side of Heartland Road, west of the New State Trooper's Office Building, on the east side of the boundary with the NDOR facility.**



**13. Camera #'s 58 through 61 follow:**

**#58 Looking north, from near intersection of Heartland Road and Jefferson Street.**



**#59 Looking south, along Jefferson Street from its intersection with Heartland Road.**



**#60 Looking east, from Heartland Road from its intersection with Jefferson Street.**





**#61 Looking west, across Lot 4 from Jefferson Street just north of its intersection with Heartland Road.**



**14. Camera #'s 62 through 65 follow:**

**#62 From across a frontage road (along Highway 283) from the southwest corner of Lot 2 and looking north, toward the west end of Lot 1.**



#63 Looking south from the southwest corner of Lot 2.



#64 Looking east from the southwest corner of Lot 2.





**#65 Looking west across the frontage road and Highway 283 from the southwest corner of Lot 2.**



**15. Camera # 66 Transformers, all four are labeled as non-PCB containing on them. They are located near the southwest corner of Lot 3 and east of Comfort Inn.**



16. Camera # 67 Transformer, with no labeling - located near the southwest corner of Lot 3 and east of Comfort Inn.



17. Camera #'s 68 through 71 follow:

#68 Looking north from near the northwest corner of Lot 1 and the Subject Property.





**#69 Looking south from near the northwest corner of Lot 1 and the Subject Property.**



**#70 Looking east from near the northwest corner of Lot 1 and the Subject Property. Power lines follow the northern boundary of the Subject Property.**



**#71 Looking west from near the northwest corner of Lot 1 and the Subject Property.**



**18. Camera # 72 Irrigation well at middle of north boundary of Lot 3.**





**19. Camera # 73 Transformer near the northwest corner of Lot 1 and Subject Property, box on pole is labeled as non-PCB containing.**



**20. Camera # 74 Grey electrical box and green telecommunications box near the middle of the northern boundary of Lot 1 and the northwest corner of Subject Property.**

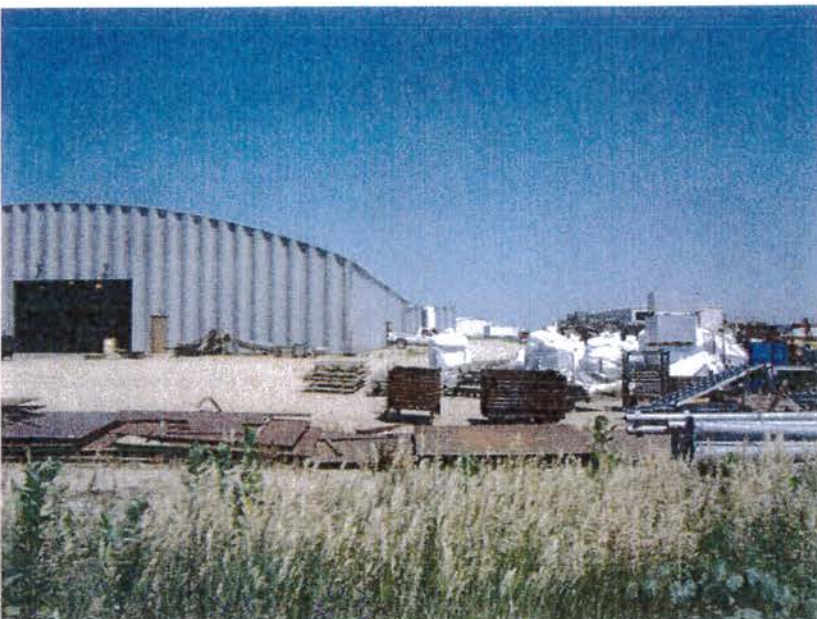


21. Camera # 75 Transformers south end of Eihlers Machine Shop along near the middle of the north Subject Property Line and north of Lot 7.



22. Camera #'s 76 through 79 follow:

#76 Looking north from near the northwest corner of Lot 11 and the North Subject Property Line. East side of Eihlers Machine east building shown.





**#77 Looking south from near the northwest corner of Lot 11 and the North Subject Property Line.**



**#78 Looking east from near the northwest corner of Lot 11 and eastward along the North Subject Property Line.**



**#79 Looking west from near the northwest corner of Lot 11 and westward along the North Subject Property Line. Eihlers Machine west building shown north of North Subject Property Line.**



**23. Camera # 80 Four Transformers along the North Subject Property Line, near the northwest corner of Lot 11. All four transformers are labeled as containing no PCBs.**





24. Camera # 81 Looking north from along the North Subject Property Line, near the northwest corner of Lot 11. Kuhn Knight Agricultural Equipment facility is seen in distance.



25. Camera #'s 82 through 84 follow:

# 82 Looking north from about halfway along the North Subject Property Line of Lot 11.



**# 83 Looking east from about halfway along the North Subject Property Line of Lot 11.**



**# 84 Looking west from about halfway along the North Subject Property Line of Lot 11.**

