

City Happenings



August 2009

An eNewsletter from the City of Lexington, Nebraska



Arbor Park playground modernized

Arbor Park (Plum Creek Parkway and Maple Street)
This month City crews completed installation of four playground features at Arbor Park.

In addition to replacing an aging swing set, the playground now boasts an X-Wave 2 (a modern version of a teeter-totter); a StarBurst Climber; and a Rock n' Rider.

Since 2006 the City has upgraded playground equipment at Plum Creek Park, Oak Park, Pioneer Park, and now Arbor Park. In addition to local tax funding, the Lexington Community Foundation contributed funds for all these improvements.



X-Wave 2



New Swing Set



StarBurst Climber



Rock n' Rider

More Lexington Park Improvements



New sidewalk around Kirkpatrick Memorial Park Shelter.



New lights all around Plum Creek Park



Hike/Bike Trail project nearly done

Phase one of Lexington's pedestrian/bicycle trail is nearing completion. There is still limited amounts of fine grading and seeding remaining. Of note is the designation of some existing street lanes as part of the trail. This was part of the trail plan that

qualified for federal funding. The street trail goes through mostly residential area and connects the new trail with the pedestrian overpass that spans railroad tracks at Madison Street (see the left fork of the red line on the map to the left). Mostly the west side of South Washington Street and north side of Elm are marked and signed for trail use only (no parking).

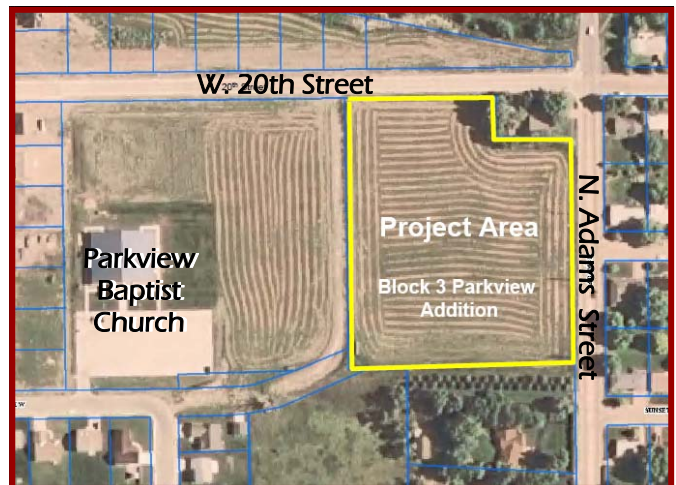


The red line shows Phase 1 of Lexington's Pedestrian / Bicycle Trail.



Legend Oaks in gear

Work has begun on a new planned senior living development called Legend Oaks. Just southwest of 20th & N. Adams, phase 1 will include 10 2-unit townhomes. See the April 2009 City Happenings for details. The first unit is scheduled for completion in March 2010.





August Library News

Lexington Public Library
 907 North Washington St.
 by Kathy Thomsen
 Library Director

The theme chosen for the Storytime and Lapsit programs for the 2009-2010 school year is "Follow the A, B, C Road to the Magical Land of Storytime." Come to the library and follow the alphabet road to the delightful world of reading and stories. A different letter of the alphabet will be emphasized each week.

For children ages three and older Storytime programs will be held on Monday evenings at 7:00 p.m., or Tuesday mornings at 10:00 a.m. Please note that the Tuesday morning Storytimes time has changed to 10:00 a.m. this year.



Lapsit also is beginning at a new time. Lapsit programs are for children birth to three years of age and will be held on Wednesday mornings at 10:00 a.m.

Storytime and Lapsit programs include stories, songs, finger plays, and activities that are age appropriate. We are inviting all children, who are of Lapsit and Storytime age, to come and join in the reading and fun activities that are planned. If you would like more information about this or other library programs, please call the library at 324-2151.


Attention all teachers, quilters, scrap bookers and anyone needing cool patterns cut quickly and neatly from a variety of materials!

The library will have two extra AccuCut machines and over 100 extra dies on loan from the Meridian Library System throughout the month of August. For a

complete listing of the die patterns available contact the library.



Remember, it's not just toxic to you



Carefully store and dispose of household cleaners, chemicals, and oil


Did you know that many household products are dangerous to our kids, pets, and the environment?

These materials pollute our waterways if washed or dumped into storm drains or roadside ditches that lead directly to our lakes and rivers. Household cleaners, pesticides, gasoline, antifreeze, used motor oil, and other hazardous products need to be labeled, stored, and disposed of properly.

So what can you do? Simple.

- Be aware of household products that can harm children, pets and the environment. Pay attention to words such as "warning" or "caution" on product labels.
- Reduce waste and save money by purchasing only the materials you need.
- Keep unused products in their original containers with labels.
- Never dump hazardous products down storm drains, roadside ditches, sinks, or on the ground — take them to your local community's hazardous waste collection day.

Help keep our homes and the environment safe.



Support provided by NDEQ

Find out more at www.cityoflex.com



EnergyWise Tip: heat and cool your home efficiently

Energy costs continue to rise ... with no end in sight! There is, however, something you can do to counteract this energy sticker shock. For some homes, up to 50 percent of the energy used annually is for heating and cooling. Fortunately, you have an option to minimize this expense.

What is a heat pump? When you drive by a house, you can't tell if the heating/cooling equipment is a heat pump or an air conditioner – they look the same, are connected to the furnace the same, perform the same in the summer in terms of cooling and efficiency; however, heat pumps are able to also heat in the winter and deliver 200-300 percent efficiency.



Why does this matter? Because for 70 percent of the winter the heat pump is able to heat the home by itself. When it gets really cold, the thermostat senses the heat pump needs help, and it cycles the electric or gas furnace with it to heat the home. All this is done automatically – simply set the thermostat to “heat.”

Why should you care? Based on today's electric and fossil fuel costs, with a heat pump an average home can save \$300-\$400 a year in heating costs because the heat pump is so efficient. For a majority of the winter you are heating your home with a system that is 200-300 percent efficient rather than the normal 80-95 percent efficiency of a furnace which burns fossil fuel.

Are incentives available? Yes! Check with Lexington Utilities System (308-324-2343). There are NEW incentives available for customers who put in a high efficient heat pump. Choose between either a direct cash incentive or 2.5% low interest loan through the Nebraska Energy Office.

There are very few cases where it makes sense from the homeowners' standpoint to install an air conditioner outside rather than a heat pump. They both perform exactly the same function in the summer – but the heat pump provides big savings during the winter.

You owe it to yourself to make an informed decision regarding your home's heating and cooling system because it is one that will be with you for a long while. Contact Lexington Utilities System to find out about the efficient, modern heat pump. While you're at it, check out the many EnergyWiseSM programs being offered to help you use electric energy efficiently and save money.



Sign up for youth fall sports!



Registrations are now being accepted for Youth Soccer and Girls Youth Volleyball, starting September 1, 2009. Go to www.cityoflex.com to view and print details and registration forms. Time and space are limited, so don't delay!

Subscribe

To subscribe to Lexington City Happenings, fill out the form at www.ci.lexington.ne.us/aboutus.asp. If you have comments or suggestions, contact Dennis Burnside, dburnside@cityoflex.com, 308-324-2341. You are encouraged to forward this to others you think may be interested. Archives available online.





2010 CENSUS: IT'S IN OUR HANDS

United States
Census
2010

In 2010, the U.S. census will define who we are as a nation. Taken every 10 years, the census affects political representation and directs the allocation of billions of dollars in government funding. Simpler than ever, in 2010 every residence will receive a short questionnaire that is simple and fast to complete and return. Prompt and accurate return of your census forms helps you, your community, your state and your country!

Achieving a complete and accurate 2010 Census is in our hands.

It's in Our Hands: Your Participation in the 2010 Census Matters

- ★ Every year, more than \$300 billion in federal funds is awarded to states and communities based on census data. That's more than \$3 trillion over a 10-year period.
- ★ Community planners and governments rely on census data to determine where there is the most need for additional social services and who gets needed funding, such as community development block grants.
- ★ Census data guide local decision-makers in important community planning efforts, including where to build child-care and community centers.
- ★ Census information helps determine locations for schools, roads, hospitals, child-care and senior citizen centers, and more.
- ★ More information:
<http://2010.census.gov/2010census/>



The Lexington Family Aquatic Center
is closed for the 2009 season.
See you for more cool fun in 2010!





Scrap Tire Collection

September 25, 2009, 8:00 - 5:00
Dawson County Fairgrounds

1000 Plum Creek Parkway

(Hayfields north of fairgrounds)

- ① Tire disposal only
- ① No rims allowed
- ① Please arrive with a count of your tires
- ① No dumping before or after September 25, 2009
- ① The City reserves the right to reject deliveries
- ① May close early if tonnage limit is exceeded
- ① No Dealers

A brief sign-in form must be completed before tires can be left at the site (available at the site).

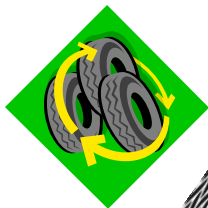
If you have questions or need more details, contact the City office, 324-2341, or City Service Building at 324-5995.

sponsored by



made possible by a grant from

The Nebraska Department of Environmental Quality



SEPTEMBER RECYCLING EVENTS



FREE Household Hazardous Waste Collection



This free service is brought to you by Lexington Area Solid Waste Agency, the Nebraska Department of Environmental Quality's Waste Reduction and Recycling Incentive Grants Program, and dedicated local volunteers.

Friday, September 18, 2009, 8:00 - 12:30 a.m.
LASWA - Land-fill Site - MRF Building
(about 10 miles north on Hwy. 21)

Saturday, September 26, 2009, 8:00 - 10:00 a.m.
Lexington Fairgrounds, 1000 Plum Creek Parkway

Items accepted include yard and garden chemicals, pesticides, herbicides, flammables, paints and thinners, auto products, used oil, antifreeze, household products and cleaning chemicals, mercury, batteries (auto, lead acid and/or rechargeable, titanium, cadmium and nickel halide), fluorescent light bulbs, computers and monitors.

NO infectious waste and needles, radioactive waste, asbestos, oil or paint containing PCBs, high school labs, appliances, construction waste, or tires.

Materials should be delivered to the collection site in sturdy, disposable containers labeled according to contents, no larger than 5 gallons or 50 lbs. The HHW program reserves the right to reject any materials. If you have any questions, contact Dave Sterner, LASWA Project Director, at 308-324-3351, or Bill Elliott, Southwest Nebraska HHW Program Manager, at 308-345-4333.

