



October 2010

# City Happenings

An eNewsletter from the City of Lexington, Nebraska



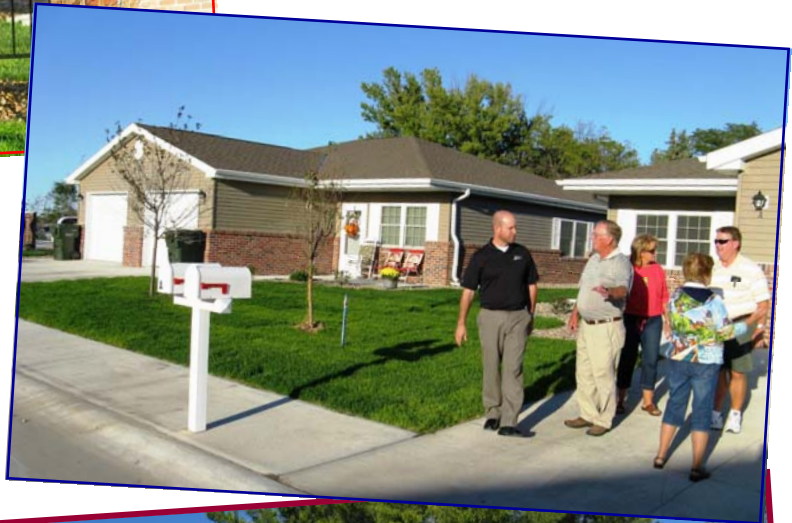
## What's Going On At . . . ?



**Left:** Legend Oaks Neighborhood sign.

**Center:** Legend Oaks Tour: (l to r): City Manager Joe Peplitsch, Greater Lex Corporation President Vance Bricker, Pam Tomasek, Dorothy Bricker, City Councilperson Steve Tomasek.

**Bottom:** The Clubhouse at Legend Oaks.



New senior housing project Legend Oaks is essentially complete at North Adams between 18th and 20th Streets. The project's scope evolved slightly during the construction, resulting in 21 townhome units instead of the planned 20. A clubhouse was added at the northeast corner. All 21 units are rented, and most of them are already occupied. The residents as well as developers Kathy and Cliff Messner were honored at an open house held September 30. Designed for senior (55+) rental living, Legend Oaks is administered by the Lexington Housing Authority. For more information, Contact Diane Adams at LHA, 308-324-4633.



## Soccer Stadium (Optimist Recreation Complex)



(13th & Airport Road) - On Sundays in August and September, the Lexington Adult Soccer League played their end-of-season games. The tournaments christened the City's new soccer stadium located on the north end of the Rec Complex. Hundreds of spectators and players attended the games. The adjacent new building was not quite finished yet, but should be ready for business when high school play starts in the spring. The building houses restrooms, concessions, changing areas and equipment storage. The Soccer Stadium is a cooperative project between the City, School District, and Adult Soccer League.



Left: Assistant City Manager Dennis Burnside (right) accepts a token of appreciation (a soccer ball signed by all the teams in the league) from Soccer League leaders Juan Mendoza and Ramon Prado.  
Right: "Zamora" is the 2010 league champion team.



Special Thanks to Orthman Manufacturing for donating materials and fabrication of the four new goal posts!



(801 West Vine Street)

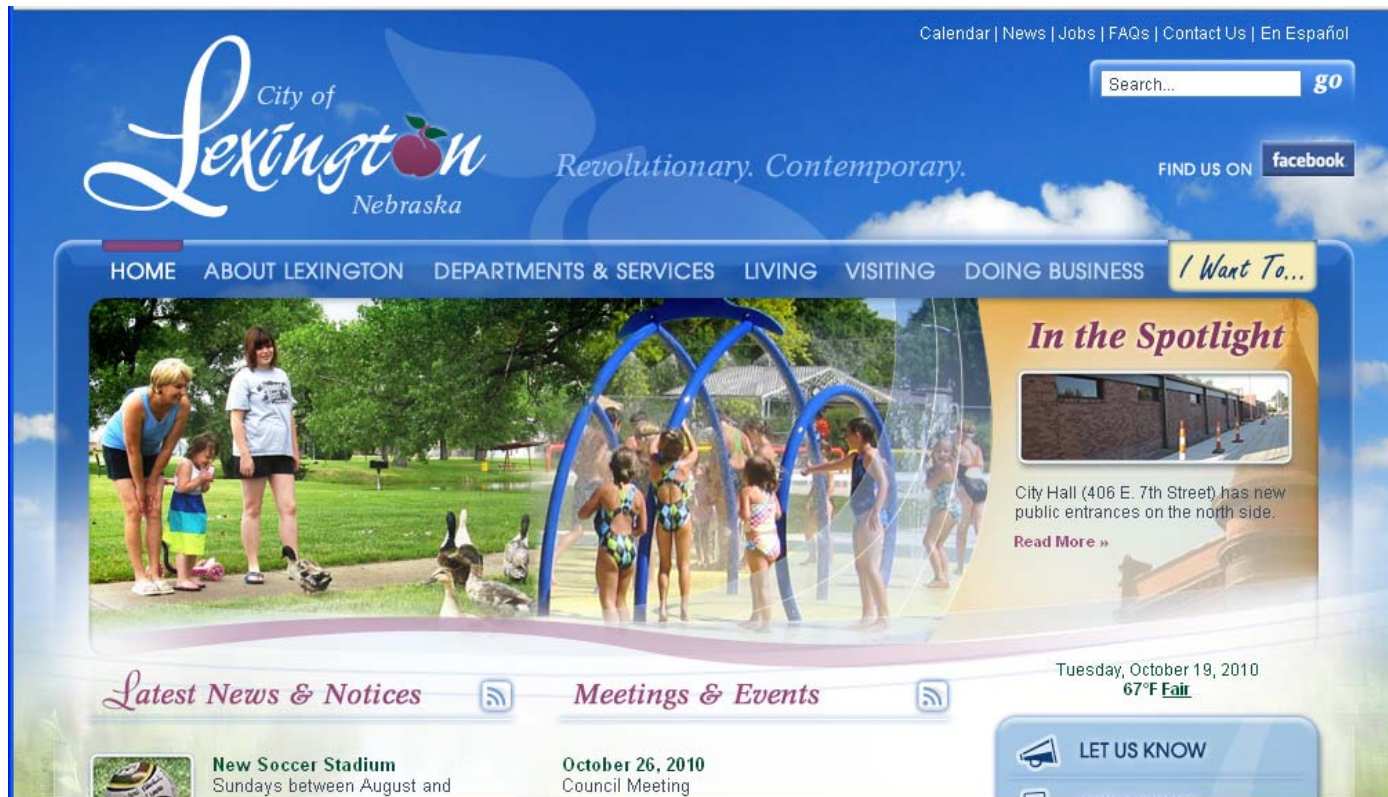
### Fall/Winter Hours

Mon. - Fri.  
8:00 a.m. - 5:00 p.m.

The Service Building is no longer open weekends.



## City Launching New Website Design



If all goes according to plan, on October 20, 2010, users surfing to the City's website ([www.cityoflex.com](http://www.cityoflex.com)) will be treated to a new look and feel. The computer experts say the transition will be gradual depending on the user's internet provider, but it should be viewable by all by October 22.

In addition to improved graphics, there will be several improvements such as the calendar, search capabilities, and instant Spanish translation.

At the same time the City's communication is expanding to Social Networking. We started a Facebook page in late September. With minimal advertising, it already boasts



more than 200 people who "Like" it (this used to be called "become a Fan of..."). The Facebook page currently does not have much

information. In the future, the new website calendar can automatically create Facebook entries, which will start filling in the Facebook page. When we post updates such as events and street closings, Facebook users can see those when they log into their Facebook accounts. If you use Facebook, search for City of Lexington, Nebraska, and click the "Like" button.

The new website will also manage subscriptions to City Happenings and other new notification groups. This means that, if you now subscribe to City Happenings, please go to [www.cityoflex.com](http://www.cityoflex.com) and subscribe again, since the current subscription list cannot be transferred. Make sure the website looks like the screen shot above before you try this!



## Property Maintenance Corner



by Bill Brecks  
Chief Building Inspector

Chapter 26 of the Lexington City Code establishes the regulation of diseased, dead or dying trees. If trees on private property or in street right-of-way adjoining private property are found to be infected or in a dead or dying condition, the City will issue the owner a compliance order to have the trees removed within thirty days of the notice.

Another Nebraska winter is right around the corner, bringing ice and snow which causes these dead trees to become a safety issue to our citizens and damaging to our property. To avoid these issues or a compliance order, be safe and take of your trees.



### City Code Sec. 26-1 Diseased, Dead or Dying Trees Declared Nuisances and Prohibited; Dutch Elm Disease.

Trees of any species in a diseased, dead or dying condition are hereby declared to be a public nuisance and shall be removed. (Ord. No. 1160, Sec. 1; Ord. No. 2002)

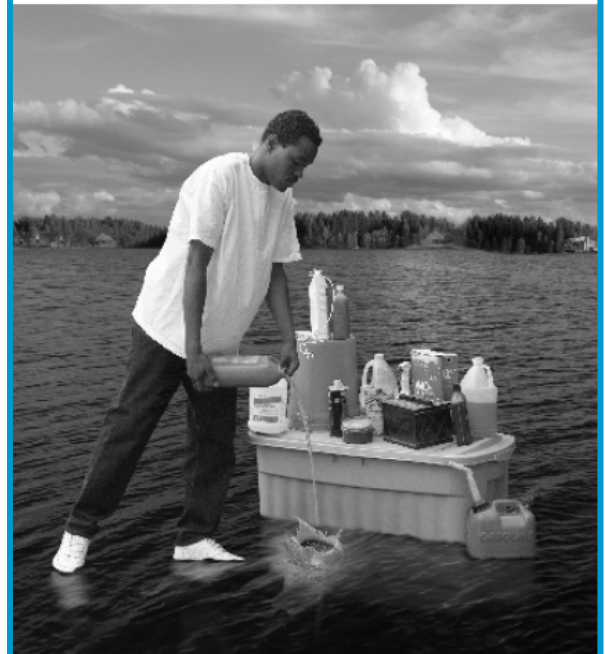
## New Sign at the GGC



Lexington's Grand Generation Center installed a new LED motion sign this summer, replacing a trailer sign that had been parked near the curb. The new sign, on the west side, allows for multiple messages and easy changing. Money for the sign came from several fund-raising events the GGC held last year, including a TV raffle and a concert by the World Famous Platters. Thanks again to the Lexington Community Foundation for contributing \$3,750, and Wal-mart for donating the flat-screen television for the raffle.



## Remember, it's not just toxic to you



Carefully store and dispose of household cleaners, chemicals and oil.

Did you know that many household products are dangerous to our kids, pets, and the environment?

These materials pollute our waterways if washed or dumped into storm drains or roadside ditches that lead directly to our lakes and rivers. Household cleaners, pesticides, gasoline, antifreeze, used motor oil, and other hazardous products need to be labeled, stored, and disposed of properly.

So what can you do? Simple.

Be aware of household products that can harm children, pets, and the environment. Pay attention to words such as "warning" or "caution" on product labels. Reduce waste and save money by purchasing only the materials you need.

Keep unused products in their original containers with labels.

Never dump hazardous products down storm drains, roadside ditches, sinks, or on the ground—take them to your local community's hazardous waste collection day.

Help keep our homes and the environment safe.

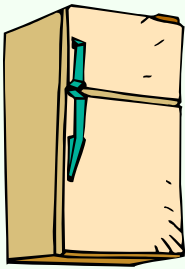


Support provided by NDEQ



## EnergyWise Tip: Find Holiday Energy Savings in the Kitchen

Each year, from Thanksgiving to Christmas and through New Year's, friends and family gather to celebrate and enjoy the spirit of the season. While almost everyone knows they can save electric energy during the holidays by decorating with LED lights, most people do not consider the great energy-saving opportunities they have with another seasonal tradition: **EATING!** There are several ways to avert unnecessary energy use in the kitchen. Consider a few of these tips:



### Refrigerators

Refrigerators and freezers get a real workout over the holidays. They are some of the larger energy consumers in your house, and they often account for as much as 15 percent of your home's total energy usage. Help your refrigerator and freezer to operate

efficiently by keeping the doors closed as much as possible. Note, however, that leaving the door open while you take out the items is more efficient than opening and closing the door several times.

Keeping your refrigerator and freezer full during the holidays is easy and energy efficient. The mass of cold items inside the refrigerator reduces the appliance's temperature recovery time after the door is closed. Be careful not to cram them so full that cool air cannot properly circulate around the food.

### Ovens

Typically, the holiday turkey, or whatever your favorite meat may be, will roast for hours. Since it is a long, slow cook, there is no need to preheat your oven. As a general rule, unless you are baking breads or pastries, you usually do not need to preheat.



Do not open the oven door to take a peek! Instead, turn on the oven light and check on the cooking through the window. Slightly opening the oven door lowers the temperature inside by as

much as 25 degrees. That increases cooking time and wastes energy.

Self-cleaning ovens use less energy for normal cooking because of the higher insulation levels built into them. Consider using the self-cleaning feature right after using your oven, to take advantage of the residual heat.

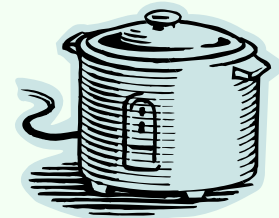


### Stovetops

When cooking on the range top, match the size of the pan to the heating element. More heat will go into the pan and less will be lost in the surrounding air. Clean burners and reflectors provide better heating while saving energy. If you need new reflectors, buy quality ones. The best on the market can save as much as one-third of the energy when compared to dull, non-reflective pans.

### Other Ways to Cook

Do not overlook alternative cooking appliances during the holidays. Fast and efficient microwave ovens use around 50 percent less energy than conventional ovens, and they do not heat up your kitchen. They are especially handy and energy efficient when heating leftovers.



Slow cookers (crock-pots) are perfect for many dishes. On average, they will cook a whole meal for about a dime's worth of electricity. Also, electric skillets can efficiently steam, fry, sauté, stew, bake or roast a variety of food items, and some can double as serving dishes. If you are baking or broiling small food items, a toaster oven is ideal because they use, on average, one-third the energy of a bigger oven.

To get the most from the energy you use during the holidays, give these EnergyWise<sup>SM</sup> tips a try. You can save a little on your utility bill, and you will have plenty to talk about over dinner.





## Library News

**Lexington Public Library**  
907 North Washington St.  
by Kathy Thomsen  
Library Director

The Lexington Public Library will be hosting Nebraska author **Patricia Bremmer** on Tuesday, October 19 at 7:00 p.m. Patricia grew up in Omaha and has a strong fascination with mysteries and puzzles. She now lives in a small, rural area of western Nebraska and writes mysteries that incorporate country and city life, including her latest mystery *Murder's a Cinch*. An "Elusive Clue" word puzzle hidden within the pages of her books helps bring out the detective in her readers. Bremmer captivates her audiences with her relaxed tone while discussing her writing.

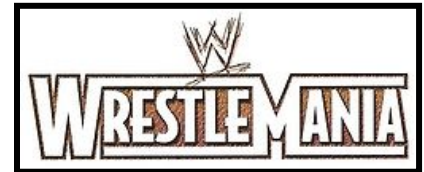


On Sunday, November 7 at 2:00 p.m. **Sally Hauff** will present the program "Finding Your Rainbows Everyday." Hauff shares

how we can all find rainbows in our everyday life if we open our hearts and minds to see them. She also will give a view of the wisdom our children have to share with us. As Ward Schrack states on her website, "She has a lot to say and says it well."

Both programs are sponsored by the Lexington Library Memorial Fund and the Lexington Community Foundation.

The Board of the Lexington Public Library will be hosting a "Friends Night Out at the Library" on Thursday, November 18 at 7:00 p.m. Come have coffee, cookies, and conversation about the opportunities that can be found when you become a Friend of the Library.



Calling all WrestleMania Fans! If you are a student in Grades 5 – 12 be sure to stop by the library and join the WrestleMania Challenge. The WrestleMania World Champion will win tickets to WrestleMania XXVII 2011 in Atlanta, Georgia.



**Youth Basketball  
Sign-ups  
Boys & Girls  
Grades 3-6**

go to [www.cityoflex.com](http://www.cityoflex.com)  
to download and print a  
registration form.

**The program starts Sunday,  
November 7, 2010.**



## Lexington snow and ice removal

**W**inter will soon be here once again. Before the first winter storm of the season, the City would like to remind citizens of the following points related to snow removal. There is also an Emergency Snow Route map on the next page, and is also found on the Maps link at the City's website.

Property owners are required to remove snow and ice from sidewalks abutting their property, within 48 hours of the snowfall. Removal of snow and ice from sidewalks not only ensures safe passage for pedestrians (including school children), but also limits liability. Someone who sustains injuries from slipping on ice might claim their injuries resulted from property owner neglect.

Please remember that snow and ice removed from your property is not to be placed into the street, instead move it to non-paved areas.

The City needs the cooperation of all citizens as we work to remove snow and ice from the streets. Citizens are encouraged to listen to local radio stations or read the local newspaper for announcements of possible Snow Emergency situations where substantial snowfall is experienced or anticipated.

In times of a declared Snow Emergency, parking along streets in the designated Snow Emergency Route is prohibited. Commercial Areas may also be included (see Snow Route map).

Citizens living along these routes are encouraged to comply with the prohibition and move their vehicles from the street.

Citizens living along these routes are encouraged to comply with the prohibition and move their vehicles from the street.

In addition, during a Snow Emergency, parking in the Downtown area is prohibited. In non-emergency times, citizens are still encouraged to move their parked vehicles off of the street in a reasonable period of time after snowfall to allow City crews access to remove the snow and ice. Information regarding the removal of snow in your area of the City can be obtained by contacting Glenn Hawks, Community Services Director, at 308-324-5995.



The City of Lexington would like to reiterate that snow and ice removal is important for vehicular traffic as well as pedestrian traffic.

Please take the time to do your part to keep our streets and sidewalks safe.

The City of Lexington thanks everyone for their cooperation and prompt attention to this issue.



### WE ASK OUR CUSTOMERS

#### DO NOT DEPOSIT IN TRASH DUMPSTERS:

yard waste • tree branches • wood  
cement • iron • batteries and tires . . .  
. . . as the landfill will not accept these items.

#### YOUR DUMPSTER IS FOR YOUR HOUSEHOLD TRASH ONLY

If you have a curbside trash container, DO NOT place trash in large alley dumpsters. These are for alley customers only.

If your curbside trash container fills before the weekly pickup, please call for additional containers.

DO NOT under any circumstances put hot BBQ coals or fireplace ashes in your dumpster. If you are caught doing this you will have to pay to replace the dumpster if fire occurs.

If you see someone using alley containers for construction materials, yard waste, or other unaccepted items please call us right away and we will take care of it.



**Dan's Sanitation**  
324-6693 • Lexington

