

City Happenings

August 2011

An eNewsletter from the City of Lexington, Nebraska

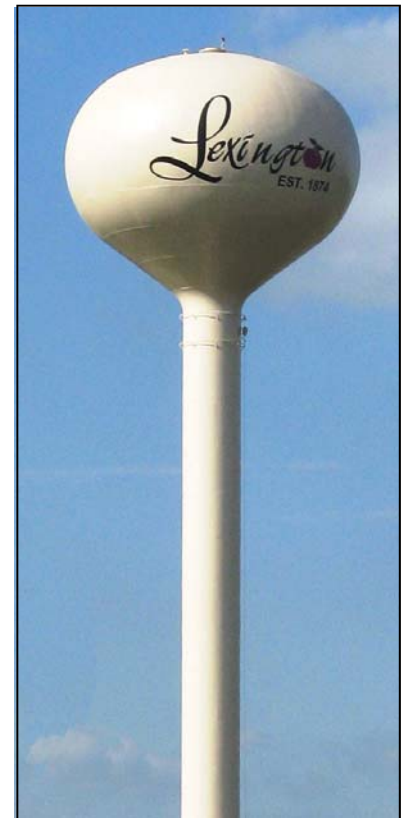


Water tower refinishing almost complete



Exterior paint restoration on Lexington's two water towers is nearing completion. The project started in July, and will be complete by the end of August. The north tower (above), was the first to be painted complete with new logo. Each tower will be painted with the same color and logo design.

The logo reflects the standard image used by the City of Lexington organization, which is the Lexington name in script typeface with a plum in place of the "o." You may also notice the "EST. 1874" under the name. This was added to provide a historical reminder that our community was originally incorporated under the name of Plum Creek in 1874. The name was later changed to Lexington in 1889.



Schwarz is new Lexington Police Captain



Captain Jeff Schwarz

Lexington City Manager **Joe Peplitsch** has appointed **Jeff Schwarz** Captain of the Lexington Police Department, effective July 19, 2011. The rank of Captain is new for the LPD, and is second in command to the Police Chief.

Prior to his promotion, Schwarz served as an Investigator for the Lexington Police Department. He has been a sworn law enforcement officer for 16 years, both at LPD and in the Dawson County Sheriff's Office. He served in the Army National Guard from 1986 to 1984, rising to the rank of Sergeant.

Schwarz was born in Cozad, then moved to Lexington and graduated from Lexington High School. Schwarz and his wife, Amy, have four children, the youngest starting college this fall.



Property Maintenance Corner



by Bill Brecks
Chief Building Inspector



**City Code Sec. 26-1
Diseased, Dead or
Dying Trees Declared
Nuisances and
Prohibited; Dutch
Elm Disease.**

Trees of any species in a diseased, dead or dying condition are hereby declared to be a public nuisance and shall be removed. (Ord. No. 1160, Sec. 1; Ord. No. 2002)

Another Nebraska winter is right around the corner, bringing ice and snow, which causes dead trees to become a safety hazard, and possibly damaging to our property. In the coming weeks, the Building Department will begin marking trees identified as dead or dying. The identified trees will be marked with a simple orange "X" as seen in the photo above right. If these trees are not removed or trimmed, a compliance order will be issued, imposing a deadline to remove the tree.

A few brief property maintenance highlights to consider as well:

- Weeds and grass may not exceed twelve inches in height.
- The home owner is responsible for weeds in sidewalks and curb lines.
- Trees must be trimmed to a height of eight feet over sidewalks.
- Plants and trees on corner lots must be maintained to ensure vision clearance.
- Failure to correct will result in a compliance order.



EnergyWise Tip: **Pay Attention; What You 'Plug In' Can Cost You Money**

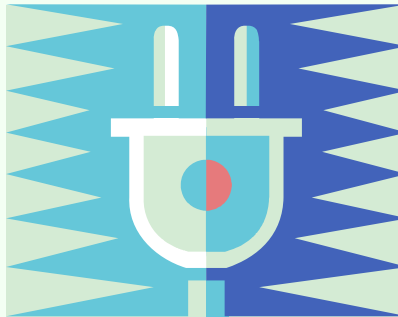
Here's a ghost story that's really haunting: Your appliances are plugged in, but even though none of them are turned on your meter still spins. This mystery may be solvable. Read on.

You have been doing your best to manage the energy you use in your home. You installed compact fluorescent lamps, invested in a high-efficiency heat pump system, and when they wore out you replaced your old less-efficient appliances with those that have received the ENERGY STAR™. As you open your latest electric bill, you can hardly wait to see the big drop in energy use and a much smaller bill. That is when it hits you. After all that work to reduce your use, your account still shows significant energy consumption. You were not even home much of the past month, yet the kilowatt hours are still there! How can that be?

Have you ever considered your "plug load?" A plug load is the energy consumed by any electric device that is plugged into a socket. Many of these devices consume power, even when you are not using them. That wasted amount of energy, often referred to as "vampire or phantom load," is the amount of energy devices consume while in standby mode or switched "off."

A recent Minnesota field study revealed that consumer electronics and entertainment devices account for 15 to 25 percent of the residential electric load. Today, we find that plug load is the fastest growing energy load in the residential sector. Here are a few examples of the leading contributors:

- ◆ Coffee Maker, 900 watts
- ◆ Computer, 200 watts
- ◆ Plasma Television > 50-inches, 1,200 watts
- ◆ LCD Television < 50-inches, 300 watts
- ◆ Standard Tube Television 20-inches, 450 watts
- ◆ Gaming Console, 425 watts
- ◆ DVD/DVR, 450 watts
- ◆ iPod Touch, 2 watts
- ◆ Cell Phone Charger, 5-8 watts
- ◆ Portable Electric Heater, 1,200 – 1,500 watts
- ◆ Aquarium, 50-1,210 watts
- ◆ Toaster Oven, 1,225 watts
- ◆ Microwave, 800-1,300 watts
- ◆ Table Top Lamp, 60-100 watts



- ◆ Inkjet Printers, 100 watts
- ◆ Laser Printers, 400-750 watts
- ◆ LCD Monitors, 20 watts
- ◆ 17 inch CRTs, 65 watts
- ◆ Computer Speaker, 5 to 20 watts
- ◆ Laptop Computer, 50-120 watts
- ◆ Desktop Computer, 65-200 watts
- ◆ Water Distiller, 1,000 watts
- ◆ Hot Water Circulator, 35 watts plus water heater run time
- ◆ Fountains & pumps in decorative ponds, 200 watts
- ◆ Dehumidifier, 350 watts

Many of these devices are manufactured with an electronic interface that has a "Stand-By" mode which accounts for 20percent of the total electricity consumed by plug load. What can you do to reduce this plug load energy consumption and phantom load waste? Here are some suggestions:

- ◆ Turn the TV and other connected devices off when they are not being used
- ◆ Turn down the LCD's backlight
- ◆ Turn on the power saver mode
- ◆ Buy a television or computer monitor with a smaller screen
- ◆ Reduce light output with other settings
- ◆ Control room lighting
- ◆ Watch TV together or watch less TV
- ◆ Take inventory of all plug loads
- ◆ Eliminate unnecessary appliances
- ◆ Put gadgets on terminal strips that can be turned off easily
- ◆ Disconnect devices everyday
- ◆ Use your computer's power saving programs
- ◆ Wash clothes in cold water and use extra spin cycle
- ◆ Dry clothes on a low temperature setting
- ◆ Use insulated carafes to keep coffee hot

Combine a few of these measures to watch your energy savings add up! By understanding your plug load, with a little effort and a few small changes in how you use your appliances, you will become EnergyWiseSM in no time at all.



Grand Generation Center celebrates 40 years



More than 150 people came to Lexington's Grand Generation Center August 5 to help the Center celebrate 40 years of serving the needs of Lexington's seniors.

Featured speakers included Mayor John Fagot, and Linda Forman, Director of the West Central Nebraska Area Agency on Aging. Former City Manager Vance Bricker made some impromptu remarks, giving thanks to some people who were instrumental in development of the Center. Music was provided by keyboardist (and former state Senator) Jim Cudaback.



ABOVE: The 2011 Grand Generation Staff (l to r): Marcia Holtz, Deb James; Ann Luther, Carol Meyer, Angie Sund and Bernita Brin

RIGHT: WCNAAA Director Linda Forman



ATTENTION DOG OWNERS

As you and your dog are out walking in your neighborhoods, in the City's parks or on the trails, please remember to clean up after your dog. A simple plastic bag slipped over your hand like a glove makes an efficient and clean pick-up tool. Picking up is just part of having a dog. It may seem silly at first, but people who see you do it will know any mess left behind is NOT from your dog. Picking up shows pride in your community, in yourself, and in your dog. You'll set a great example for others, and will help create a positive image for dogs and their owners.



Remember, you're not just fertilizing your lawn



Fertilize sparingly and caringly

Green your lawn, not the river

Storm drains found in our streets and yards lead directly to our lakes and streams. So, fertilizer from your lawn can easily end up in our water. This fertilizer can form large algae blooms and use up oxygen that fish and other aquatic insects need to survive.

What can you do? Simple:

- Sweep fertilizer off of driveways and sidewalks and back onto your lawn.
- Recycle grass clippings by leaving them on your lawn.
- Use fertilizer with low phosphorus.
- Select a slow-release fertilizer where at least half of the nitrogen is water insoluble (check the label).

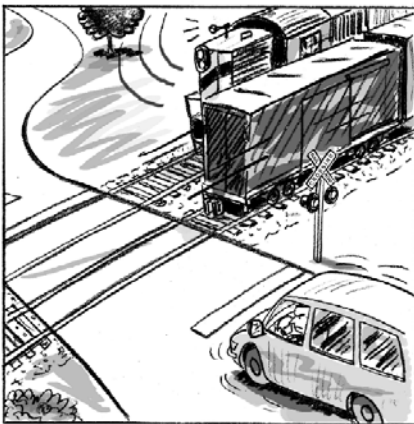
Keep the green on the lawn and in your pocket!



Support provided by NDEQ



Watch Out!



...There Could be a 2nd Train.

Just because 1 train has passed doesn't mean a 2nd train isn't coming. Be sure BOTH tracks are clear before crossing. **Always Expect a Train!**



801 West Vine Street
308-324-5995

Summer Hours

Mon. - Fri.
7:00 a.m. - 4:00 p.m.

THIRD Saturday
(through August 20):
8:00 a.m. - 12:00 p.m.

The Service Building is the place to go to:

- dispose of furniture, appliances, and other large items (small fees may be applied);
- pick up free wood chips, dirt or compost for your garden and landscaping needs; and
- dispose of tree limbs.

Non-tree yard waste may be dumped anytime at the City's compost pile on east Walnut (please don't dump lawn bags).

CLIP AND SAVE

TORNADO

Now that tornado season is here, Emergency Management Warning Sirens will sound to alert residents of an impending tornado in our area.

**TORNADO
NATURAL DISASTER
TECHNICAL HAZARD**

3 MINUTE STEADY SIGNAL

This signal indicates that a tornado, natural disaster, or technical hazard is pending. Persons should take cover or move to a place of safety and listen to the local radio or TV station for information on further instructions. This siren may sound more than once if deemed necessary by Emergency Management.

**Do not call the police or radio station to ask for information.
People SIGHTING a tornado or funnel in this area are urged
to notify the Dawson County Emergency Center at 911.**

ALL-CLEAR

An all-clear bulletin will be issued by the Local Radio and TV Stations in cooperation with the National Weather Service.

**Local Emergency Management will not
issue an all-clear statement.**

During unusual threatening weather or emergency conditions listen to the Local Radio or TV Stations for further information.

SAFETY GUIDELINES

The following are general safety guidelines for seeking shelter:

- Move to a lower level or basement.
- If no lower level is available, move to an interior room or hallway on the lowest floor and get under a sturdy piece of furniture. Put as many walls as possible between you and the outside.
- Stay away from windows.
- Flying debris from tornadoes causes most deaths and injuries. Cover your head and make yourself the smallest target possible.
- Do not try to outrun a tornado in your car; instead, get out of the vehicle and seek safe shelter in a nearby building.
- If you are outside and there is no shelter immediately available, avoid trees and vehicles. Do not get under an overpass or bridge. You are safer in a low, flat location. Lie flat in a nearby ditch or depression and cover your head with your hands.

CLIP AND SAVE

