

City Happenings



August 2017

An eNewsletter from the City of Lexington, Nebraska



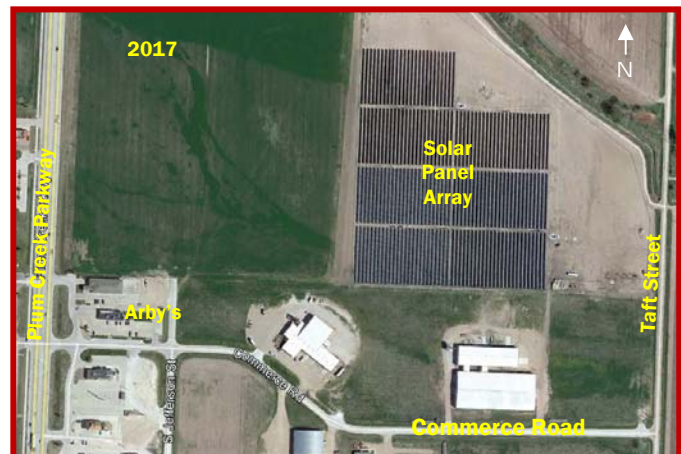
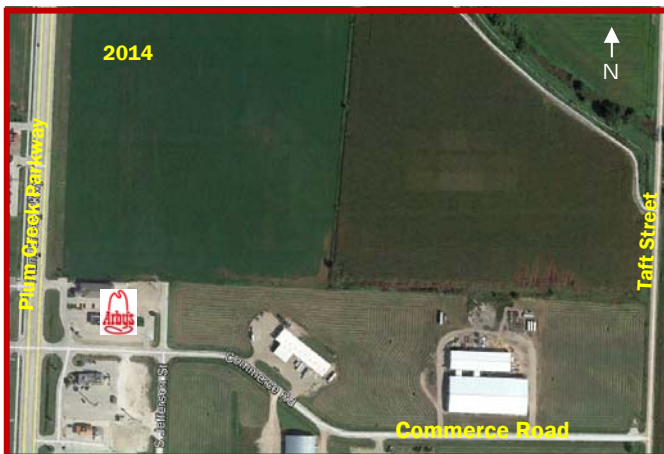
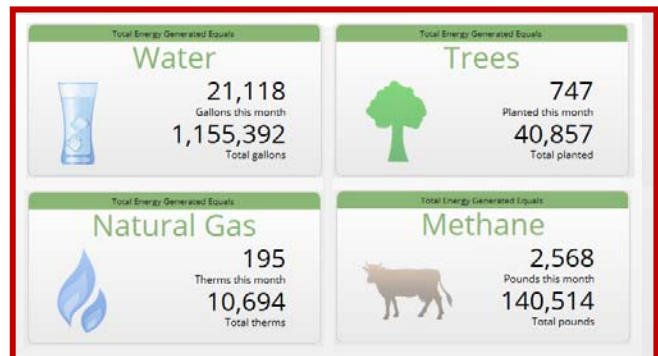
New Solar Array Operational

With nearly 12,600 solar panels, the largest per-capita solar farm in Nebraska is currently in Lexington, and has been online since May 11, 2017. And you can get online and see how it's operating.

The array has already generated more than 2 million Kilowatt Hours (KwH) of electricity. Now, at the peak of the summer sun season, it's producing up to 32,000 KwH per day. This renewable energy goes directly on the Lexington's electric grid, providing a long-term benefit to local residents and businesses.

At the array website you will find several view options, graphs, and insights. Two of these are shown at the right (screen shots taken July 25). The top dials show current production, plus lifetime electricity generation (2.31 Gigawatt Hours = 2.31 million KwH). The bottom block shows carbon offsets for various activities such as planting trees (which absorb carbon), or burning fuels (which puts carbon in the air).

Find the array's web page at <https://apps.alsoenergy.com/kiosk/39136?dashkey=2a5669735064576a4442304b772b71513d&tag=954916>.



What's Going On At . . . ?



The Concord

Is that a new duplex at the corner of 20th and Erie Streets? Well, the Greater Lexington Corporation will begin building more duplexes in the next few months, but what you see now is the beginning of a foundation for the Concord neighborhood's 1,600 square foot community building. The Concord is a

senior (55+) condominium housing development started in 2012. The Concord units are owner-occupied dwellings. Lawn care, snow removal, and other common maintenance items are taken care of for Concord residents through a homeowner's association. Anyone interested in learning more about pre-purchasing a Concord unit and being involved in the design process should contact Joe Peplitsch at 308-324-2341 for details.



Lexington Family Aquatic Center

The Aquatic Center has added a new cyclone slide at the lap pool. The new slide replaces an older one that was retired two years ago, and received funding from the Lexington Community Foundation pool fund. Because the slide is at the deep end of the pool, users must be able to swim across the pool unassisted.



Sketch of Concord Clubhouse



Housing Lots Available in Northwest Lexington



- **Dozens of sites to choose from**
- **\$5,000 each**
- **Utilities on site (Electric, Sewer, Water)**
- **Protective covenants in place**
- **Are not located in floodplain;**
- **Sewer depths accommodate basements**
- **Close to Optimist Recreation Complex and Sandoz Elementary School**
- **Lots sizes: approx. 12,000 - 25,000 square feet**



Contact Lexington City Manager, 308-324-2341



**801 West Vine Street
308-324-5995
Mon. - Fri.
8:00 a.m. - 4:00 p.m.**

SUMMER SATURDAYS:
**The Service Building is open
the third Saturday of the month
8:00 a.m. - 12:00 p.m**

- dispose of furniture, appliances, pallets, and other large items
- recycle paper, plastic or cardboard
- pick up free wood chips or compost

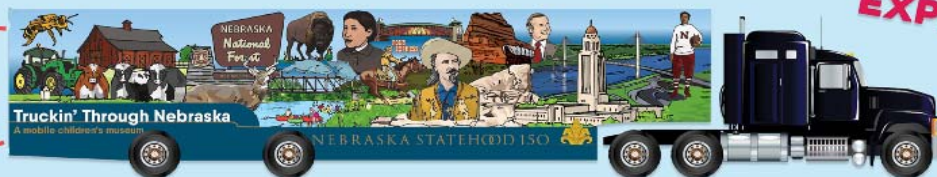


TRUCKIN' THROUGH NEBRASKA

A MOBILE CHILDREN'S MUSEUM

FREE AND OPEN TO THE PUBLIC!

X
HAVE FUN!



EXPLORE!

X

THURSDAY, AUGUST 31 • 11:00 A.M. – 3:00 P.M. (school groups only)
FRIDAY, SEPTEMBER 1 • 11:00 A.M. – 6:00 P.M. (school groups until 3:00, then public)
SATURDAY, SEPTEMBER 2 • 11:00 A.M. – 3:00 P.M. (general public all day)

Dawson County Historical Society & Museum
805 Taft Street



NEBRASKA STATEHOOD 150

LEARN MORE AT
NE150.ORG/MUSEUM

YARD WASTE ONLY!

At the yard waste site on East Walnut



Violators subject to fines
Other large items may be disposed of at
The City Service Building, 801 W Vine.



Like us on Facebook!

Get the latest scoops about what's going on in Lexington!

FaceBook users: be sure to search for "City of Lexington, Nebraska" (not to be confused with the generic page the FaceBook folks created). Only our official page gives you the latest news and updates.

<https://www.facebook.com/pages/City-of-Lexington-Nebraska/157277430966096>



City Employees Beautify Downtown Lexington



On May 16 a number of City Employees volunteered to go downtown after hours and replant some of the flower planters that were installed during the 2012 Downtown Revitalization Project. The plants have filled in nicely over the summer (see photo above). Thank you for your care and commitment!



Left to right: City employees Michelle Rivera, Cyndi Osborne and Deb James working on a planter at 5th & Washington, May 16, 2017.



"To leave the world better than you found it, sometimes you have to pick up other people's trash."



LEXINGTON
FARMERS MARKET

Starts June 24, 2017
Opportunity Center Parking Lot
(1501 Plum Creek Parkway)
Saturdays 8-11 a.m.
Tuesdays 3-6 p.m.





**GGC
Happenings**

407 East 6th Street

Plan to join us at noon on Wednesday, August 16, for Charlotte Endorf's second program at the GGC, "The Life and Legacy of Annie Oakley." Invite a friend to join you for lunch and the program!

Charlotte Endorf
WANTED

The Life and Legacy of Annie Oakley

She was described as the "greatest woman rifle shot." A star attraction of Buffalo Bill's Wild West Show, Oakley thrilled audiences around the world with her daring shooting feats. A champion in a man's sport, she changed ideas about the abilities of women in the 19th Century. Her fame and fortune came from her skill with guns. Endorf's presentation dispels myth to reveal the real Annie Oakley.

Author, Professional Speaker
& Free Little Library Steward

"Always on Target—Adventurous Annie Oakley" and "They Call Me Teddy" books available by: Ingram, Amazon and Charlotte's website www.charlotteendorf.com

HUMANITIES NEBRASKA
www.humanitiesnebraska.org

**WE ASK OUR
CUSTOMERS**

**DO NOT DEPOSIT IN
TRASH DUMPSTERS:**

- yard waste • tree branches •
- wood • cement • iron •
- batteries and tires . . .

. . . as the landfill will not accept these items.

**YOUR DUMPSTER IS
FOR YOUR
HOUSEHOLD TRASH
ONLY**

If you have a curbside trash container, DO NOT place trash in large alley dumpsters. These are for alley customers only.

If your curbside trash container fills before the weekly pickup, please call for additional containers.

DO NOT under any circumstances put hot BBQ coals or fireplace ashes in your dumpster. If you are caught doing this you will have to pay to replace the dumpster if fire occurs.

If you see someone using alley containers for construction materials, yard waste, or other unaccepted items, please call us right away and we will take care of it.

Dan's Sanitation
324-6693 • Lexington





Library News

by Kathy Thomsen
Library Director



907
North
Washington
Street



The August "Booked for Lunch" program will be held at the Library on

August 24. **Crystal Werger**, Director of the **Dawson County Historical Society Museum** in Lexington, will present the program.

The September "Booked for Lunch" program will feature



musician **Adam Miller** performing Folk Songs of the First World War. One of the premier autoharpists in the world, Adam Miller is a renowned American folksinger and natural born storyteller. His time-honored traditional folksongs and ballads are songs of America's heritage. Serving for the "Booked for Lunch" programs begins at 11:30 a.m. and the programs begin at 12:00 noon. To register for either of the "Booked for Lunch" programs, stop by the Library or call the Library at 324-2151.



The fall 2017 **Prime Time Family Reading Time** will begin on Saturday, September 16 at 10:30 a.m. Other sessions will follow on September 23, September 30, October 7, October 21 and October 28. All sessions will run

from 10:30 a.m. until 12:00 noon. Prime Time Family Reading Time is a bilingual reading program for children age six to ten and their families. Led by a storyteller and a discussion leader, children and their families meet to read and discuss award winning children's books. Prime Time is made possible by the **Peter Kiewit Foundation, Sherwood Foundation, Carol Gendler, Kellogg foundation and Humanities Nebraska**. The program is limited to eighteen families and families must register to attend. Contact JoAnn at the Library for more information or to register.

The first **Storytime** of the fall season will be held on Wednesday, September 6, at 10:30 a.m.



Preschool children from birth to age 5 are invited to join us for Storytime every Wednesday. There will be stories read, songs sung and learning activities for everyone.



All adults, who participated in the summer 2017 reading program, need to turn their reading logs in at the circulation desk prior to September 5. Prizes will be awarded that week.

If you enjoy reading or stitching of any kind, the Library has a group for you!

The **Monday Afternoon Book Club** meets the first Monday afternoon of the month at 3:00 p.m. Members have lively discussions about a variety of books.



The **Novel Stitchers** gather at 3:00 p.m. every

Tuesday afternoon. So bring your current stitching project, enjoy the snacks and peruse the Library's newest books. You are invited to join either of these groups at any time.

The **Friends of the Library** will meet on August 28 at 3:00



p.m. If you are interested in learning more about the Friends of the Library, their projects and goals, contact Karen or Kathy at the Library or join us at the next meeting.





EnergyWise Tip: Refrigerators

Hosting a big party where your guests are all bringing a dish? It would probably be good if the chilled foods stay chilled. Do you have enough space in your refrigerator to accommodate everyone? If you just had a vigorous workout or a hot day in the sun, wouldn't a cold refreshing beverage sound good? Most people do not consider that after space conditioning, water heating and lighting, refrigerators and freezers are usually the fourth largest consumer of energy in a home.

A 2015 appliance survey revealed that nearly half of the homes in greater Nebraska have more than one refrigerator. In addition, nearly 80% of homes in the same area have one or more separate freezers. Most of these additional units are located outside the kitchen, being found in basements, garages, utility rooms, pantries or other areas. While these extra units are a great convenience, they also take extra energy to run. It is easy to overlook this fact until the electric bill arrives. If this operating period coincides with the higher summer rate period and increased air conditioning use, the cost can leave you wondering if the extra refrigeration is worth it.

What can you do to reduce this cost? Here are some ideas:

- To begin with, refrigerators manufactured before 1990 often consume three-to-four times more energy than new energy efficient models. If your second unit is more than 10 years old, try moving all your refrigerated items into one unit; preferably, your newest. Refrigerators are



the most efficient when they are kept full. However, confirm that air inside the refrigerator can flow around all items to ensure proper cooling.

- Only plug-in and operate the second refrigerator when you know it is needed. If you are hosting a large celebration, turn the unit on a few hours before the event and unplug it after it is no longer needed.

- Consider loading a cooler up with ice if the extra room is needed for a brief period. The cost of running your old refrigerator over a 48 hour period can often be offset by the cost for a bag of ice.

- Clean the coils! At a minimum, the coils on all of your refrigeration annually. Clean them more frequently if the unit is in a dusty or dirty environment. Do it for your new unit, too!

- If you really need a second unit, consider purchasing a compact unit that is ENERGYSTAR-qualified. These units will consume only a minor portion of the energy a 30-year old clunker will.

Lexington Utilities System and Nebraska Public Power District want to help you keep cool this summer! This includes keeping foods and beverages refrigerated in the most efficient way possible. For more ideas on how you can make your home or business EnergyWiseSM, as well as financial incentives to help with the cost of your energy-saving upgrades, contact Lexington Utilities System or visit www.nppd.com.



RYDE Transit

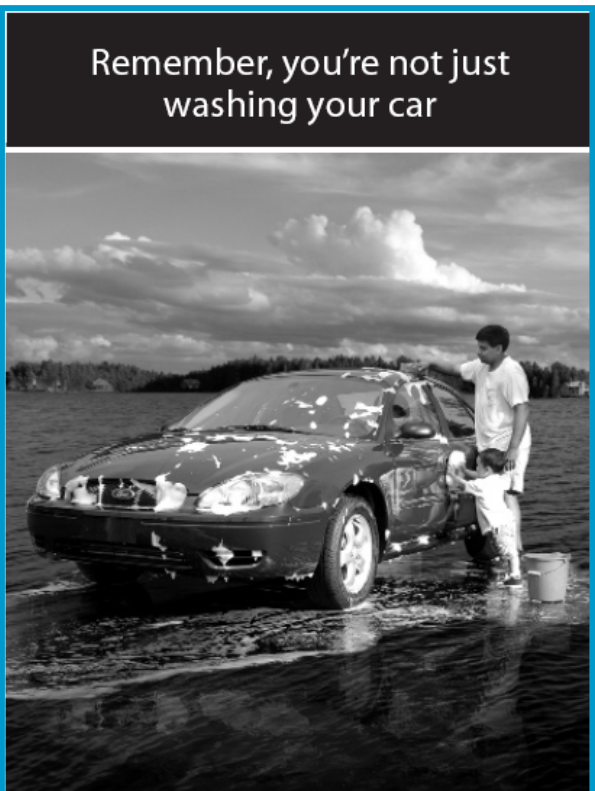
RYDE Transit is your public transportation service available to all residents of Lexington.



Hours – 8 AM to 5 PM – Monday thru Friday.

Please schedule rides 24 hours in advance by calling 308-324-3670 or stopping at the office located at 407 E 6th St.

Public Transportation is easy to ride, and open to everyone.



Remember, you're not just washing your car

Practice good car care

Did you know . . . 4 quarts of oil can form an 8 acre oil slick if dumped or spilled down a storm drain?

That's because storm drains found in our streets and yards lead directly to our lakes and streams. So, oil and dirty water from washing our car that goes into storm drains pollutes our water.

What can you do? Simple.

- Take your car to the carwash where the dirty water is treated before it gets to our water.
- Wash your car on your lawn or direct the dirty water towards the lawn and away from the storm drain.
- Keep your car properly tuned.
- Recycle used fluids and never dump them down the storm drain.

Help keep the oil where it belongs . . . in your car.



Support provided by NDEQ



CLIP AND SAVE

TORNADO

Now that tornado season is here, Emergency Management Warning Sirens will sound to alert residents of an impending tornado in our area.

**TORNADO
NATURAL DISASTER
TECHNICAL HAZARD**

3 MINUTE STEADY SIGNAL



This signal indicates that a tornado, natural disaster, or technical hazard is pending. Persons should take cover or move to a place of safety

and listen to the local radio or TV station for information on further instructions. This siren may sound more than once if deemed necessary by Emergency Management.

Do not call the police or radio station to ask for information.

People SIGHTING a tornado or funnel in this area are urged to notify the Dawson County Emergency Center at 911.

ALL-CLEAR

An all-clear bulletin will be issued by the Local Radio and TV Stations in cooperation with the National Weather Service.

Local Emergency Management will not issue an all-clear statement.

During unusual threatening weather or emergency conditions listen to the Local Radio or TV Stations for further information.

SAFETY GUIDELINES

The following are general safety guidelines for seeking shelter:

- Move to a lower level or basement.
- If no lower level is available, move to an interior room or hallway on the lowest floor and get under a sturdy piece of furniture. Put as many walls as possible between you and the outside.
- Stay away from windows.
- Flying debris from tornadoes causes most deaths and injuries. Cover your head and make yourself the smallest target possible.
- Do not try to outrun a tornado in your car; instead, get out of the vehicle and seek safe shelter in a nearby building.
- If you are outside and there is no shelter immediately available, avoid trees and vehicles. Do not get under an overpass or bridge. You are safer in a low, flat location. Lie flat in a nearby ditch or depression and cover your head with your hands.



Emergency warning system tests of one minute in duration are conducted the first Thursday of each month at 9:00 a.m. Sirens are designed for outdoors warning only. For optimal safety, citizens are encouraged to get weather radios using the NOAA (National Oceanic and Atmospheric Administration) and/or SAME (Specific Area Message Encoding) standards.

CLIP AND SAVE



Lexington Area Chamber of COMMERCE

Business Education Committee presents:

Blanche Senior Scholarship
“Wings and Wine” Fundraiser Night
Mac’s Creek Winery
Thursday, August 24, 5-9 p.m.

Enjoy an evening of live music provided by Formerly Three and a dinner of wings, pasta salad, vegetable tray, bread & dessert. Tickets are \$15 each, and can be purchased at Bob’s True Value, the Lexington Area Chamber of Commerce, and Lexington High School.



Blanche Senior Scholarship

This scholarship is presented to a graduating senior who is planning to further their education beyond high school. This scholarship is for up to \$500, which is to be used for enrollment at the school of the recipient’s choice. Applicant will be judged on their overall areas of academics, school and community activities.



Lexington Area Chamber of Commerce

303-324-5504

Sponsored by:

Lexington Area Chamber of Commerce, Mac’s Creek Winery, Brookdale Senior Living Solutions, Heldt, McKeone & Copley, Central Community College, Lexington Regional Health Center, Bob’s True Value, Travis Edeal