



www.cityoflex.com

NEBRASKA
ECONOMIC DEVELOPMENT
CERTIFIED COMMUNITY



August 2018

City Happenings



Lake Reconstruction Started at Kirkpatrick Memorial Park



Much like the lake restoration project started in 2015 at Plum Creek Park, the City is undertaking a similar restoration at Kirkpatrick Memorial Park Lake. Top goals for the project are the same: improve access, improve wildlife habitat, and prevent future bank erosion. There will also be new walking trails and a couple of handicap accessible fishing pads.

As with Plum Creek Park Lake, this project will set the stage for future improvements such as new trees and landscaping, new parking, and other park amenities.

Funding for the project includes grants from the Nebraska Department of Environmental Quality, the

Nebraska Game & Parks Commission, and the Central Platte Natural Resources District.

This phase of the project is anticipated to be completed by the end of the year.



City Offices:



406 E 7th Street



Lexington, NE 68850



308-324-2341

New Police Officers

In July the Lexington Police Department welcomed two new officers.

Kareem McDougall began his duties with the Police Department on July 9. He previously served with the Dawson County Sheriff's Office. Officer McDougall brings 12 years law enforcement experience to the agency.



McDougall



Torres

Jose Torres began his duties with the Police Department on July 16. Officer Torres is a Lexington native and graduated from the Lexington High School in 2002.



Remember, you're not just getting rid of weeds and pests



Choose Earth-friendly landscaping

Did you know that herbicides and pesticides are harmful to our kids, pets, and the environment?

The chemicals in these materials pollute our waterways if washed from our lawns and gardens into storm drains or roadside ditches that lead directly to our lakes and rivers. Practicing Earth-friendly landscaping in your yard and garden can help protect kids, pets, and our waterways.

So what can you do? Simple:

- Select plants native to Nebraska. These plants require less fertilizer and water, and are more disease resistant.
- Avoid over-watering your lawn — it needs about one inch of rain/water per week.
- Use mulch around trees and plants to help retain water, reduce weeds, and minimize the need for pesticides.
- Mow your lawn high — 3 inches is the rule. Follow your community's leaf pick-up guidelines. Try mowing grass clippings and leaves into your lawn — they make good fertilizers.
- Use herbicides and pesticides sparingly and limit application to problem areas only.

Choose Earth-friendly landscaping and help keep our water clean!



Support provided by NDEQ

CITY OF
Lexington
NEBRASKA
www.cityoflex.com



Lex High School Students Plant Berms at Plum Creek Park Lake



for an “outdoor classroom,” which was envisioned in the most recent Comprehensive Development Plan (2013).

The Greener Towns grant comes from the Nebraska Environmental Trust and administered by the Nebraska Statewide Arboretum.



Thanks to a “Greener Towns” grant in May the City planted dozens of tall trees and showy shrubs on and around the peninsula at Plum Creek Park Lake.

On the heels of that project, students in Timothy Potter’s summer horticulture class planted about 100 decorative grasses in June on several berm “islands” on the peninsula. The plants were donated by Lexington High School’s greenhouse, which Potter oversees.

The City is also installed a new paved path on the peninsula (photo below), and is laying the groundwork



Like us on Facebook!

Get the latest scoops about what’s going on in Lexington!

FaceBook users: be sure to search for “City of Lexington, Nebraska” (not to be confused with the generic page the FaceBook folks created). Only our official page gives you the latest news and updates.

<https://www.facebook.com/pages/City-of-Lexington-Nebraska/157277430966096>





EnergyWise Tip: Electric Vehicles

If you think electric vehicles (EVs) are a newer, up-and-coming trend, you might be surprised to know during the first decade of the 1900s, there were twice as many EVs on the road compared to cars with internal combustion engines. Low top speeds, ranges of only a few miles, development of electric starters for gas-driven vehicles in 1912, and the discovery of large domestic reserves of petroleum limited interest in EVs for nearly the next century.

As we approached our current millennium, a few companies started to mass-produce hybrid electric vehicles (HEVs) such as the Toyota Prius and Honda Insight. Due to limitations in battery technology, HEVs use combustion engines, running an electric generator to supplement power to electric motors that actually propel the vehicle. Combining technologies yielded higher fuel efficiency rates while fostering interest in improving battery performance and range. Eventually true EVs – vehicles powered only by electricity – began to see a resurgence. In 2008, the Tesla Roadster came into the market and started the growing demand. By the end of 2016, more than one million pure electric cars and vans were owned globally.

So why would you consider driving an EV? Here are some things to think about:

Safety – EVs must pass the same safety tests as gas-powered

vehicles. EVs are far less likely to catch fire than gas-powered vehicles. On average, gas-fueled cars will catch fire at the approximate rate of one fire every 20 million miles driven. For EVs, the rate is one fire per 120 million miles driven.

Less maintenance – EVs have fewer moving parts, so there is less to maintain. You'll still have brakes to maintain, but regenerative braking technology means they will last much longer than they do on a gas-powered vehicle. Yes, battery replacement can be expensive, but most models today come with an eight-year/100K mile warranty and can last up to 15 years or more.



Quiet – EVs cars are quiet inside and outside. Especially the first few times you come to a stop in traffic, you'll notice it's the other vehicles with combustion engines idling around you that are making the noise and not you!

Performance – EVs have extremely high torque power and their pick-up is very quick and smooth. Even modest-looking sedan EVs have some incredible zero to 60 mile-per-hour ratings that leave gas-powered vehicles eating dust.

Range – Recent EV models are making huge gains in range performance due to advancements in battery technology and electric regenerative vehicle braking. As an example, in 2017, the Chevrolet Bolt boasted a range of more than 200 miles. The Volkswagen e-Golf sports a 124-mile (201-km) range.

Tax Credits – You may be eligible for federal income tax credits up to \$7,500 to defray some initial purchase costs. As with other tax credit opportunities, consult your tax preparer for additional information.

No Emissions – EVs are 100 percent eco-friendly as they run on electrically-powered motors. As your Nebraska public power utilities draw more and more energy from renewable energy resources, fewer combustion by-products are released into our environment.

Charging stations – The fear of not being able to charge your EV on a road trip is becoming a concern of the past. Numerous agencies and groups provide online locators and maps to help plan your journey and take range anxiety away.

Fuel cost – As opposed to miles-per-gallon, EV drivers refer to their fuel use as kilowatt-hours (kWh) per 100 miles driven. The new Chevy Bolt touts an efficiency rating of 28 kWh per 100 miles. Assuming electricity costs \$0.12/

(continues on next page)



EnergyWise Tip: **Electric Vehicles**

(continued from previous page)

kWh, driving 100 miles will cost \$3.36. The non-hybrid/non-electric Chevy Spark is rated at 38 miles-per-gallon of unleaded gasoline on the highway. At this rate, it requires about 2.6 gallons of gas to cover the same 100 miles. Considering the current Nebraska average gasoline price is around \$2.80 a gallon, the trip will cost \$7.28 in fuel. That's more than double the fuel cost!

Incentives – Finally, a \$200 EnergyWiseSM incentive for the installation of a residential vehicle charging station is



available for a limited time to help with the cost of charging your EV at home. Contact Lexington Utilities System (308-324-2343) to see if you qualify. They also have additional ideas on other energy-saving improvements that can help you make the most from the energy you use!





Library News

by Kathy Thomsen
Library Director



907
North
Washington
Street
(308) 324-2151



Lap Sit / Storytime for children age birth to five will begin on Wednesday, September 5, at 10:30 a.m. This program will continue to be offered every Wednesday, when Lexington Schools are in session. Each Lap Sit /Storytime offers an educational experience for children with stories, songs, activities and simple crafts.

The **Lego Club** will start again in September. Call the Library for more information.



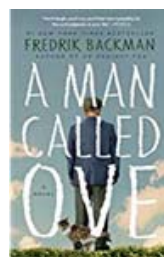
Booked for Lunch will resume in September. The Booked for Lunch

program is moving to the first Thursday of each month at noon. Serving will begin at 11:30 a.m. On Thursday, September 6, C.J. Helvey will present a program about American Girl doll outfits and their significance. The Library has the book, 2017 National Junior

Doll: Miss Nebraska available for checkout. The book highlights 93 Nebraska outfits. A light lunch will be served before the program. Please call the library (324-2151) to register.

The Monday Afternoon Book Club

will resume in September. The Book Club will meet at 3:00 p.m. on the second Monday in September because of the Labor Day holiday. We will be discussing the book, **A Man Called Ove**, by **Fredrik Backman**.



Prime Time Preschool will be held at the Lexington Library this fall. Prime Time Preschool is an interactive program featuring story sharing, literary exploration via play and group discussion.



A trained preschool facilitator reads and leads a group discussion of beautifully illustrated and award-winning children's books which include classic stories as well as new tales that promote reading and

school readiness. Another facilitator then leads the children and their parents through center-based activities based on the text that encourages increased comprehension and critical thinking. The program models strategies that encourage meaningful at-home reading behavior between parents/caregivers and their young children.

Prime Time Preschool is open to preschool children and their parents/caregivers. All Prime Time Preschool programs are free to participants and include complimentary books, nutritious meals, and door prizes. The first Prime Time Preschool program will be held on Saturday, 9/15/2018 at 11:00 a.m. and will run for 90 minutes. Subsequent programs will occur on the following Saturday mornings: 9/22/2018, 9/29/2018, 10/6/2018, 10/20/2018 and 11/03/2018. A light meal will be served prior to the program. Registration is required for this program. Please stop by the Library to register or call JoAnn at the Library (324-2151).



The Concord Neighborhood Has Another Growth Spurt



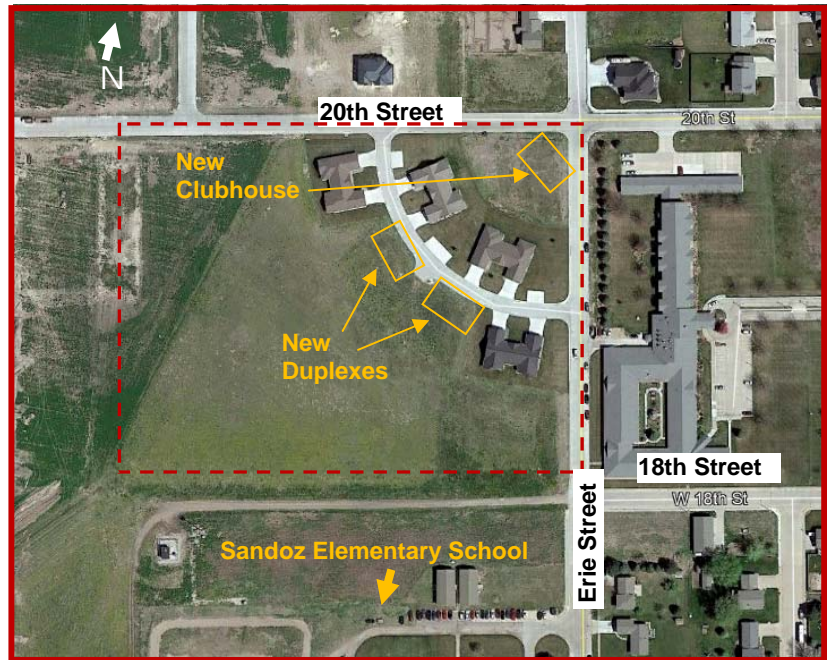
We haven't written much about "The Concord" in a while, but there has been quite a bit of activity there lately.

The Concord is a condominium development designed for residents aged 55 and older. It's located southwest of the intersection of 20th & Erie Streets.



The Greater Lexington Corporation broke ground for the Concord in 2010, and for a few years it's consisted of four duplexes. Currently two more duplexes are being completed. Also a clubhouse for neighborhood use was recently completed, at the corner of 20th & Erie.

The Concord has a homeowners association which arranges lawn mowing, snow removal, and other maintenance activities. There are plans for another street and additional duplexes in the coming year.



Anyone interested in a new unit should contact Joe Pepplitsch at (308) 324-2341.



(top) Two new duplexes at the Concord; (center) the Concord's new clubhouse; (bottom) location of the Concord and the new features.



Housing Lots Available in Northwest Lexington



- Dozens of sites to choose from
- \$5,000 each
- Utilities on site (Electric, Sewer, Water)
- Protective covenants in place
- Are not located in floodplain;
- Sewer depths accommodate basements
- Close to Optimist Recreation Complex and Sandoz Elementary School
- Lots sizes: approx. 12,000 - 25,000 square feet



Contact Lexington City Manager, 308-324-2341



WE ASK OUR CUSTOMERS

DO NOT DEPOSIT IN TRASH DUMPSTERS:

- yard waste • tree branches • wood • cement • iron • batteries and tires . . .

. . . as the landfill will not accept these items.

YOUR DUMPSTER IS FOR YOUR HOUSEHOLD TRASH ONLY

If you have a curbside trash container, DO NOT place trash in large alley dumpsters. These are for alley customers only.

If your curbside trash container fills before the weekly pickup, please call for additional containers.

DO NOT under any circumstances put hot BBQ coals or fireplace ashes in your dumpster. If you are caught doing this you will have to pay to replace the dumpster if fire occurs.

If you see someone using alley containers for construction materials, yard waste, or other unaccepted items, please call us right away and we will take care of it.

Dan's Sanitation
324-6693 • Lexington



YARD WASTE ONLY!

At the yard waste site on East Walnut



Violators subject to fines.
Other large items may be disposed of at the City Service Building, 801 W Vine.



CLIP AND SAVE

TORNADO

Now that tornado season is here, Emergency Management Warning Sirens will sound to alert residents of an impending tornado in our area.

TORNADO NATURAL DISASTER TECHNICAL HAZARD

3 MINUTE STEADY SIGNAL



This signal indicates that a tornado, natural disaster, or technical hazard is pending. Persons should take cover or move to a place of safety

and listen to the local radio or TV station for information on further instructions. This siren may sound more than once if deemed necessary by Emergency Management.

Do not call the police or radio station to ask for information.

People SIGHTING a tornado or funnel in this area are urged to notify the Dawson County Emergency Center at 911.

ALL-CLEAR

An all-clear bulletin will be issued by the Local Radio and TV Stations in cooperation with the National Weather Service.

Local Emergency Management will not issue an all-clear statement.

During unusual threatening weather or emergency conditions listen to the Local Radio or TV Stations for further information.

SAFETY GUIDELINES

The following are general safety guidelines for seeking shelter:

- Move to a lower level or basement.
- If no lower level is available, move to an interior room or hallway on the lowest floor and get under a sturdy piece of furniture. Put as many walls as possible between you and the outside.
- Stay away from windows.
- Flying debris from tornadoes causes most deaths and injuries. Cover your head and make yourself the smallest target possible.
- Do not try to outrun a tornado in your car; instead, get out of the vehicle and seek safe shelter in a nearby building.
- If you are outside and there is no shelter immediately available, avoid trees and vehicles. Do not get under an overpass or bridge. You are safer in a low, flat location. Lie flat in a nearby ditch or depression and cover your head with your hands.

CLIP AND SAVE

