

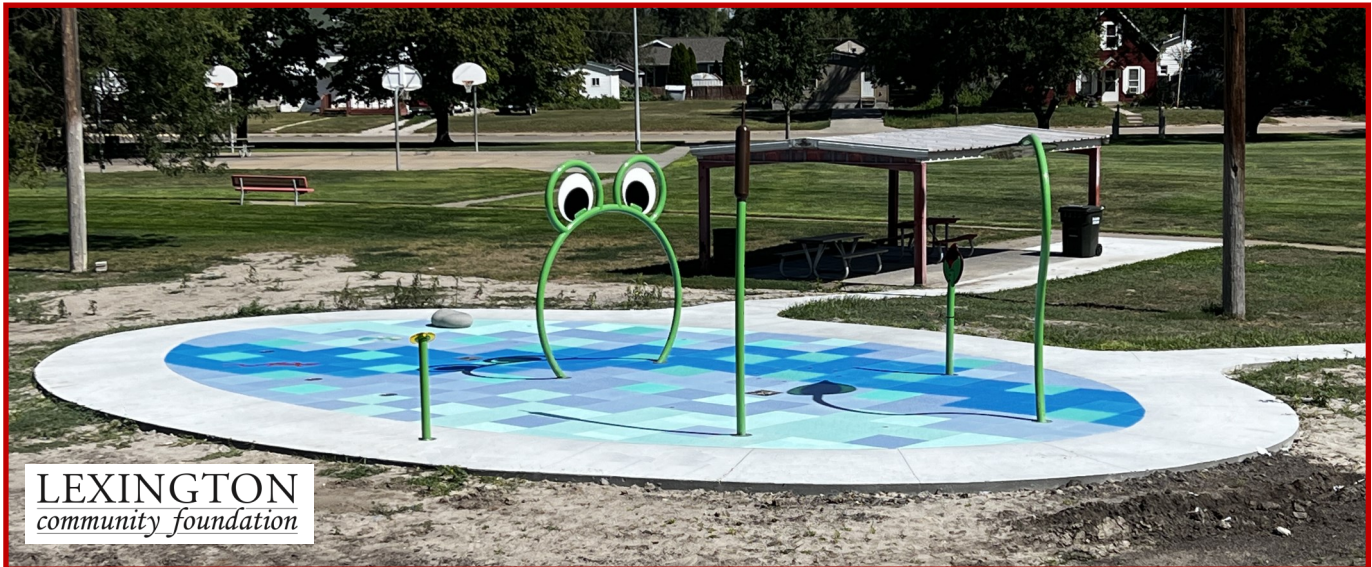
City Happenings

#96

August 2022



New Splash Pad at Oak Park



LEXINGTON
community foundation

The City of Lexington and the Lexington Community Foundation are pleased to announce the completion of the installation of the Oak Park Splash Pad.





Lexington Says Goodbye to Former City Manager

Vance M. Bricker
June 14, 1935 - July 30, 2022
Lexington City Manager 1996 - 2000

Retired Lexington City Manager Vance Bricker died July 30, 2022, at the age of 87. Vance began working for the City of Lexington on December 17, 1973 as an administrative aide, and a year later was appointed to the position of Environmental Health and Recreation Director. Then in August of 1984, he became the Personnel Director/Assistant City Manager. Vance maintained that position until November of 1996, when he was promoted to City Manager. Vance remained City Manager until his retirement in June 2000.

Vance Bricker grew up in Paxton, Neb., and worked for a cattle rancher later in High School. He loved being a cowboy, and even did some bronco busting. Like most young men of that period, he went into the service out of High School. In 1955 he finished his stint in the Army, returned home to marry a local girl (Dorothy), and went to Kearney Teachers College to get his degree.

He started his career as a High School Chemistry and Physics teacher in Shelton, and later in North Bend. He took a position in Engineering with TRW in Ogallala. After that, he worked at Nebraska Plastics in Cozad, and eventually ended up with the City of Lexington.

Vance loved learning and teaching, and earned a Masters of Public Administration degree from the University of Nebraska-Omaha. He also taught classes in personnel management, organization development and organization behavior.

A Celebration of Life Service was held on Friday, August 5, 2022, at Grace Lutheran Church in Lexington.



WE ASK OUR CUSTOMERS

DO NOT DEPOSIT IN TRASH DUMPSTERS:

yard waste • tree branches •
 wood • cement •
 iron • batteries and tires . . .

. . . as the landfill will not accept these items.

YOUR DUMPSTER IS FOR YOUR HOUSEHOLD TRASH ONLY

If you have a curbside trash container, DO NOT place trash in large alley dumpsters. These are for alley customers only.

•

If your curbside trash container fills before the weekly pickup, please call for additional containers.

•

DO NOT under any circumstances put hot BBQ coals or fireplace ashes in your dumpster. If you are caught doing this you will have to pay to replace the dumpster if fire occurs.

•

If you see someone using alley containers for construction materials, yard waste, or other unaccepted items, please call us right away and we will take care of it.

Dan's Sanitation
324-6693 • Lexington



Stormwater Runoff Pollutes

HEAL OUR WATERWAYS

NEBRASKA H₂O

ND EE

Nebraska Department of Environment and Energy

CITY OF *Lexington* NEBRASKA

Runoff from Roof

Runoff from Gutters

Runoff from Street

STORMWATER RUNOFF CARRIES POLLUTANTS INTO OUR WATERWAYS.

RUNOFF PICKS UP:

- Pet Waste
- Fertilizers
- Motor Oil
- Detergents
- Chemicals
- Litter

Like us on Facebook!

Get the latest scoops about what's going on in Lexington!

Facebook users: be sure to search for "City of Lexington, Nebraska" (not to be confused with the generic page the Facebook folks created). Only our official page gives you the latest news and updates.

<https://www.facebook.com/pages/City-of-Lexington-Nebraska/157277430966096>

GLENN HAWKS COMMUNITY SERVICE BUILDING

**801 West Vine St.
308-324-5995
Mon. - Fri.
8 a.m. - 4 p.m.**

SUMMER SATURDAYS (May - October):
The Service Building is open the **third Saturday of the month**
8 a.m. - 12 p.m

- dispose of furniture, appliances, pallets, and other large items (small fee may apply)
- recycle paper, plastic, and cardboard
- pick up free wood chips or compost





Library News



907 N Washington
(308) 324-2151



by Jennifer Norton
Library Director

“A great book should leave you with many experiences, and slightly exhausted at the end. You live several lives while reading.” - William Styron

All programs are FREE and open to the public!



Summer may soon be over, but the fun sure isn't. All ages are invited to a **Community Potluck and Street Dance** on Friday, **August 12,**

from 5-9 p.m. DJ Lopez will provide music for an evening of entertainment. Bring a hot dish or dessert to share; drinks will be provided. Get your groove on, shine up your dancing shoes, and come enjoy a fun evening of good food and dancing at the Lexington Public Library.

The **Humanities Nebraska** program, **“Artist’s Vision -Gene Roncka,”** will



be presented by **Jody Lamp** on Thursday, **September 8, at 7 p.m.** Lamp will share the work and lifetime accomplishments of renowned Nebraska artist Gene Roncka, who captured on canvas the seasons, places and memories that connect our past, present and future. Many of Roncka’s paintings are seen across Nebraska, and even in the U.S. Capitol. Lamp’s slide show features a variety of Mr. Roncka’s paintings and the stories behind his inspiration.



Enjoy some great folk music at the Library on Thursday, **September 15, at 7 p.m.,** by New

England duo **Andy and Judy Daigle.** Sing-a-longs and smiles are the norm at one of their concerts. The couple has been performing since 2009, recorded more than 80 original songs and produced 7 albums.

There is no place like Nebraska on game day in Lincoln. Author **Debra White** will present an in-depth look at Husker game day traditions with her book, **The Spirit of Nebraska.** A former UNL cheerleader, White will bring along cheer memorabilia and share stories of the Big Red. This special Sunday program is **September 18 at 2 p.m.** Come to the Library to enjoy refreshments and to catch some Husker fever. Go Big Red!



Mark **September 22 at 7 p.m.** on your calendars as the Lexington Public Library welcomes author and photographer **Jeff Barnes.** A **Humanities Nebraska** speaker, Barnes will be presenting **“Marking Nebraska: Our (Mostly) Hidden Historical Monuments,”** in which he shares

images and stories of Nebraska’s lesser-known historical monuments, placed far off the beaten path. This is our state’s “hidden history,” with long-forgotten stories and rarely seen landscapes, such as the impact of glaciers on our community monuments, or how Nebraska’s first marker nearly went to the bottom of the Missouri and – once placed at its permanent site – still disappeared for 50 years. Wherever possible, markers of the host’s community are also featured.



“Patchwork of the Prairie” will be presented by **Humanities Nebraska** speaker **Yvonne Hollenbeck** on Thursday September 29 at 7 pm at the Lexington Public Library. Hollenbeck presents a trunk show of approximately 30 quilts made by members of the same family spanning 135 years. The stories behind both the quilters and the quilts themselves are shared and accompanied with some of Hollenbeck’s own cowboy/cowgirl poetry.



Like us on Facebook





Before

YOUR 2017 CITY

18th Street, looking east from Independence

2022 PROGRESS!

After

CITY OF **Lexington** NEBRASKA

DRIVING RANGE NOW OPEN

Self-Service



May be closed if cold or stormy . . .
 Just southeast of the Lexington Fieldhouse
 Optimist Recreation Complex
 13th & Airport Road

Small Bucket

about 40 balls

\$3

Medium Bucket

about 75 balls

\$5

Large Bucket

about 105 balls

\$7



FARMERS MARKET



Starts June 18, 2022
Bob's True Value
 (1601 Plum Creek Parkway)
 Saturdays 8-11 a.m.
 Tuesdays 3-6 p.m.

(ends Oct. 8)



RYDE
Transit

RYDE Transit is your public transportation service available to all residents of Lexington.

HOURS

8 AM to 5 PM
 Monday thru Friday

Please schedule rides 24 hours in advance by calling 308-324-3670 or stopping at the office located at 407 E 6th St.

Public Transportation is easy to ride, and open to everyone.



Please Take the Backflow Survey

Here's how you can help us keep your water supply uncontaminated! The City has created an online survey, short and simple to complete. All water customers – please help with this state requirement!

The survey can be found at the City website: www.cityoflex.com. Just click on the Backflow article in the "News" section.

If you have questions please call 308-324-5995



YARD WASTE ONLY!

At the yard waste site on East Walnut



Violators subject to fines. Other large items may be disposed of at the City Service Building, 801 W Vine.

"To leave the world better than you found it, sometimes you have to pick up other people's trash."





UTILITIES SYSTEM

EnergyWise Tip: **Coffee**



by NPPD Energy Efficiency Program Manager Cory Fuehrer

How about some statistics regarding a popular beverage and the energy needed to keep our cups full?

Behind water and tea, coffee is the most-consumed beverage around the world and with 66% of all Americans drinking coffee daily, we enjoy 3.3 billion pounds per year. The National Coffee Association reports 517 million cups are consumed daily with the average U.S. coffee drinker having 3.1 cups per day. That earns us second place behind only Finland, whose coffee drinkers average four cups daily.

In May of 2021, PR Newswire reported a study that found U.S. coffee drinkers obtained 81% of their coffee servings at home. That averages to nearly 420 million cups per year with the average cup size being nine ounces. Forty-five percent of this coffee is made using drip coffee makers, 27% with single-serve machines, 9% with cold brew makers and

8% with espresso machines. Considering the average coffee machine uses 150 to 300 watts of electricity to create a cup, that equates to nearly 95 million kilowatt-hours or enough electricity to power about 8,800 American households for a year.

According to ENERGY STAR®, more than half of households use the warming plate 30 minutes or more, with nearly a quarter of households using it



for more than hour to maintain heated carafes of brewed coffee. In addition, some drip coffee maker owners have selected a unit that continuously maintains an internal reservoir tank of hot water to speed the brewing process when coffee is desired. Both issues provide an opportunity for saving energy. How much?

In reality, not a lot. At Nebraska's average residential electricity cost of \$0.1111 per kilowatt-hour, this only equates to one-quarter to one-third of a penny per hour. But for those who leave their machine on continuously, annual savings of 189 to 257 kilowatt-hours can range from \$21 to \$29.

Need to add some sweetener to these energy savings before cutting the power to the coffee maker after brewing?

- Burnt coffee – as it sits on the plate warmer, evaporation occurs. With time, the flavor becomes bitter.
- Burnt pot – after most of the water content evaporates, coffee eventually burns to the bottom. Scrubbing with salt, baking soda and

lemon juice usually removes this mess, but the extended exposure to excessive heat may warp the bottom of the pot.

- Microwave reheating – rewarming a cup in the microwave uses less energy

(continues on next page)



Coffee

(continued from previous page)



than an hour of warmer plate or hot water reservoir use.

- Potential fire hazard – The Consumer Product Safety Commission says about 50 consumers report fires caused by coffee makers per year.

Lexington Utilities System, in partnership with Nebraska Public Power District, wants to help you make your best cup possible. In addition to information on other ways to efficiently use the energy you consume, they offer a variety of EnergyWiseSM incentives to help with the cost of energy-saving improvements. To find out more, contact Lexington Utilities System or visit: www.nppd.com.



SAVE THE DATE

Wings & Wine | Brats & Beer

Blanche Senior Scholarship Fundraiser

Thursday, August 18, 5 pm - 9 pm

Mac's Creek Winery & Brewery

Tickets on sale now!



Lexington Area Chamber of Commerce
1501 Plum Creek Parkway Ste 2A | (308) 324-5504
Lexington NE 68850

cynthia@lexcoc.com

UNITED BY CULTURE FESTIVAL
SAVE THE DATE - ¡GUARDA LA FECHA!
AUGUST 19, 2022 - AUGUST 21, 2022
LEXINGTON, NEBRASKA

FRIDAY/VIERNES DOWNTOWN BUSINESS TOUR GIRA DE NEGOCIOS DEL CENTRO	19	SATURDAY/SABADO FREE MOVIE PELICULA GRATIS THE MAJESTIC THEATRE	20	SUNDAY/DOMINGO FREE FESTIVAL FESTIVAL GRATIS KIRKPATRICK MEMORIAL PARK	21
--	-----------	---	-----------	--	-----------

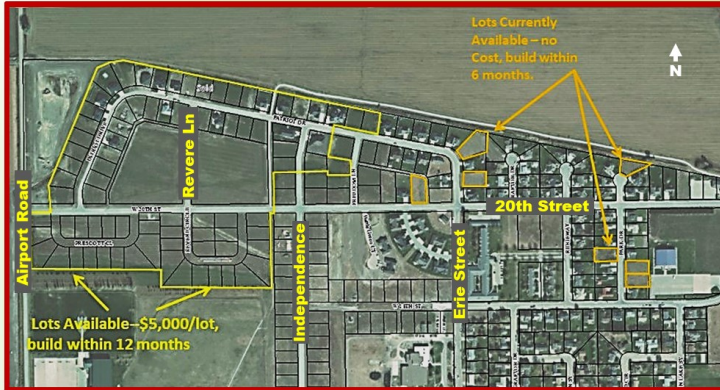
MORE INFO/MAS INFO: 402.318.3689 OR HOLA@UNITEDBYCULTUREMEDIA.ORG
OPPORTUNITIES/OPORTUNIDADES
SPONSORSHIPS - VOLUNTEERS - VENDORS
PATROCINADORES - VOLUNTARIOS - VENEDORES

Give With Your Heart | November 10, 2022 | givebiglexington.org

Hosted by Lexington Community Foundation



Housing Lots Available in Northwest Lexington



**Contact
Lexington
City Manager
308-324-2341**

- **Dozens of sites to choose from**
- **Protective covenants in place**
- **Utilities on site (Electric, Sewer, Water)**
- **Sewer depths accommodate basements**
- **Close to Optimist Recreation Complex & Sandoz Elementary School**
- **Lots sizes: approx. 12,000 - 25,000 square feet**
- **\$0-\$5,000 each**
- **Are not located in floodplain;**

Housing Lots Available in East Lexington



**Contact
Lexington City
Manager
308-324-2341**

- **Dozens of sites to choose from**
- **\$5,000 each**
- **Lots sizes: approx. 11,000 - 15,000 sq. ft.**
- **Utilities on site (Electric, Sewer, Water)**
- **Protective covenants in place**
- **Lots can be or have been removed from floodplain**
- **Sewer depths accommodate basements**
- **Close to Kirkpatrick Memorial Park**
- **Close to Pershing Elementary School**

■ Indicates houses under construction or complete (since this aerial photo was taken)





YOUTH TENNIS

Mondays:
August 8, 15, 22, 29

Pre-K to 3rd Grade
Red & Orange Ball Instruction

All Classes will take place at the Lexington Fieldhouse
1602 N. Airport Rd.

➔ Free to Participate

➔ 6:00 - 6:45 pm
Red Ball:
Pre-k to 1st Grade

➔ Pre-Register by August 5 to help us prepare for class sizes

➔ 6:45 - 7:45 pm
Orange Ball:
2nd & 3rd Grade

Text or email:
Jake Saulsbury with child's name,
grade level, parent's phone #, and
email to pre-register!

308-746-3543
jsaulsbury@cityoflex.com



CITY OF LEXINGTON
PLUM CREEK PARK
PICKLEBALL
ROUND ROBIN
CHALLENGE



SKILL DIVISIONS:
MEN'S & WOMEN'S:
2.5, 3.0, 3.5+
DIVISIONS MAY COMBINE BASED
ON REGISTRATION #'S

SATURDAY
24
SEPTEMBER
10 AM

REGISTER BY:
TUESDAY, SEPTEMBER 20
TEXT: ANN LUTHER,
308-325-5277 TO REGISTER

\$25
ENTRY

NO PARTNER NEEDED
ROTATE WITH NEW
PARTNER EACH ROUND
AGES 16+

ALL MONEY RAISED WILL BE
CONTRIBUTED TO THE
FUTURE INDOOR
LEXINGTON RACQUET CENTER

DONUTS & SIGN-IN BEGIN AT 9 AM | PLAY BEGINS AT 10 AM | PLUM CREEK PARK COURTS

RECREATIONAL 2.5 | COMPETITIVE 3.0 | ADVANCED 3.5+



CLIP & SAVE

TORNADO

Now that “tornado season” is here, Emergency Management Warning Sirens will sound to alert residents of an impending tornado in our area.

TORNADO NATURAL DISASTER TECHNICAL HAZARD

3 MINUTE STEADY SIGNAL

This signal indicates that a tornado, natural disaster, or technical hazard is pending. Persons should take cover or move to a place of safety and listen to a local radio or television station for information and further instructions. This siren may sound more than once if deemed necessary by Emergency Management.

Do not call the police or radio station to ask for information. People SIGHTING a tornado or funnel in this are urged to notify the Dawson County Emergency Center at 911.

ALL-CLEAR

The all-clear bulletin will be issued by the local radio and TV stations in cooperation with the National Weather Service.

Local Emergency Management WILL NOT issue an all-clear statement.

During unusual threatening weather or emergency conditions, listen to a local radio or TV station for further information.

SAFETY GUIDELINES

The following are general safety guidelines for seeking shelter:

- Move to a lower level or basement
 - If no lower level is available, move to an interior room or hallway on the lowest floor and get under a sturdy piece of furniture. Put as many walls as possible between you and the outside.
 - Stay away from windows.
 - Flying debris from tornadoes causes most deaths and injuries. Cover your head and make yourself the smallest target possible.
- Do not try to outrun a tornado in your car; instead, get out of the vehicle and seek safe shelter in a nearby building.
- If you are outside and there is no shelter immediately available, avoid trees and vehicles. Do not get under an overpass or bridge. You are safe in a low, flat location. Lie flat in a nearby ditch or depression and cover your head with your hands.



Emergency warning system tests of one minute in duration are conducted the first Thursday of each month at 9:00 a.m. **Sirens are designed for outdoors warning only.** For optimal safety, citizens are encouraged to get weather radios using the **NOAA** (National Oceanic and Atmospheric Administration) and/or **SAME** (Specific Area Message Encoding) standards.

