

PROJECT PURPOSE

The purpose of the project is to improve traffic flow around the intersection of County Road 435 and US 30 and the Union Pacific Railroad.



LEXINGTON EAST VIADUCT

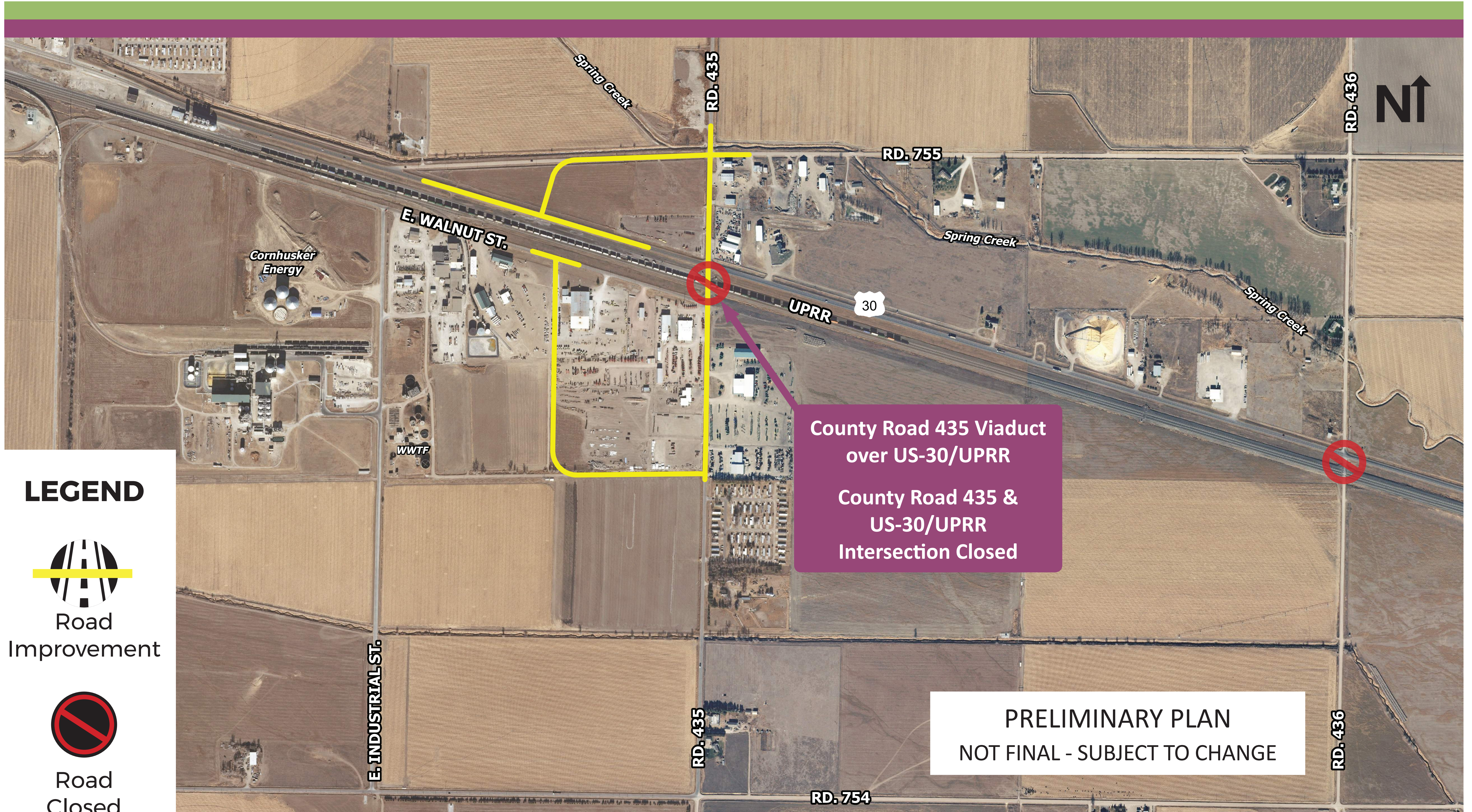


PROJECT NEED

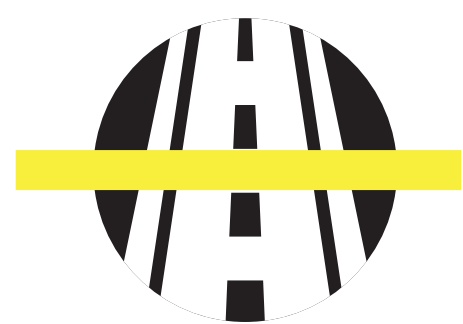
- Reduce crashes on County Road 435 near US 30 and the UPPR crossing
- Reduce vehicle delay on County Road 435
- Provide accessibility that is consistent with area planning efforts



CONCEPT A PREFERRED ALTERNATIVE



LEGEND



Road Improvement

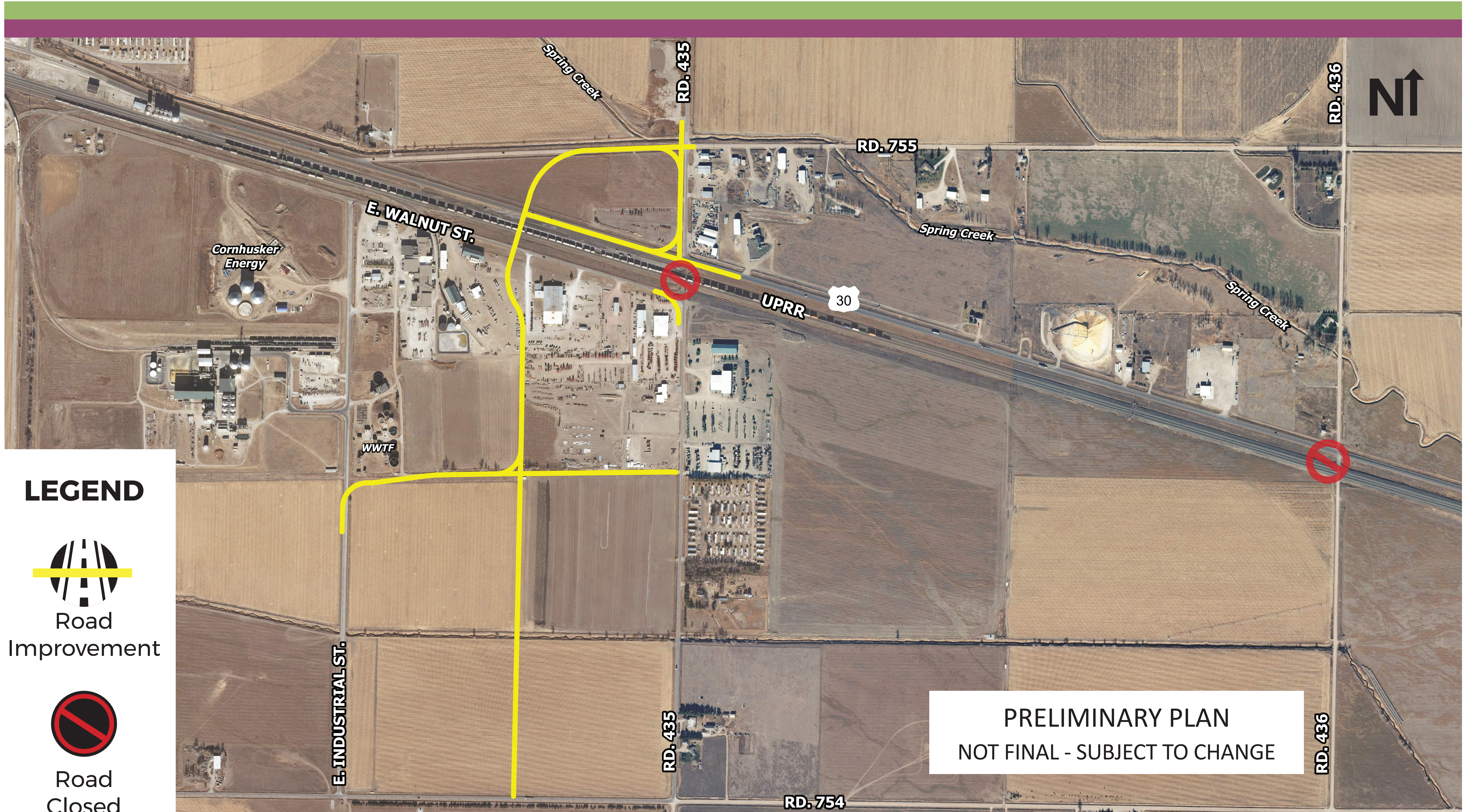


Road Closed

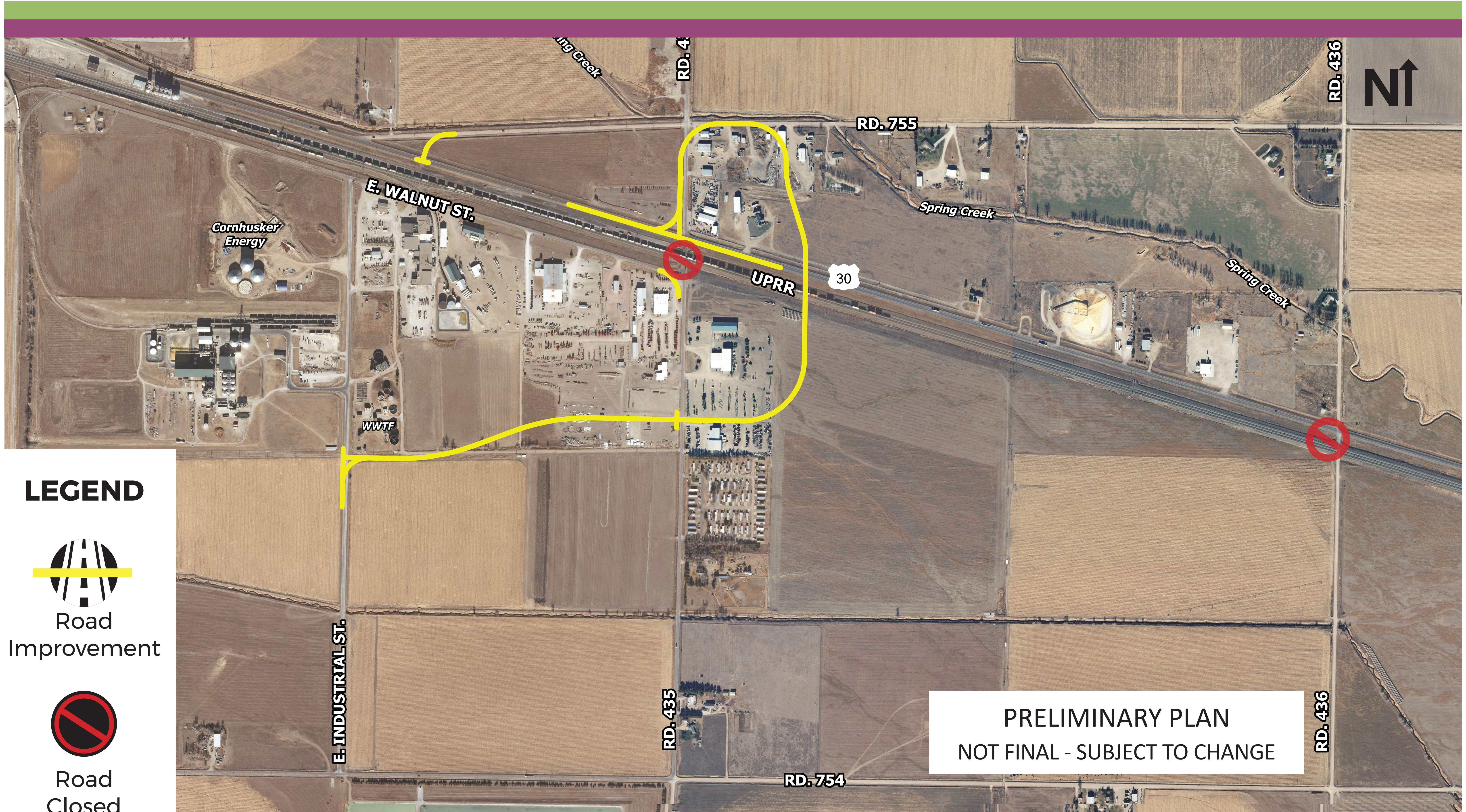
County Road 435 Viaduct over US-30/UPRR
County Road 435 & US-30/UPRR Intersection Closed

PRELIMINARY PLAN
NOT FINAL - SUBJECT TO CHANGE

CONCEPT B



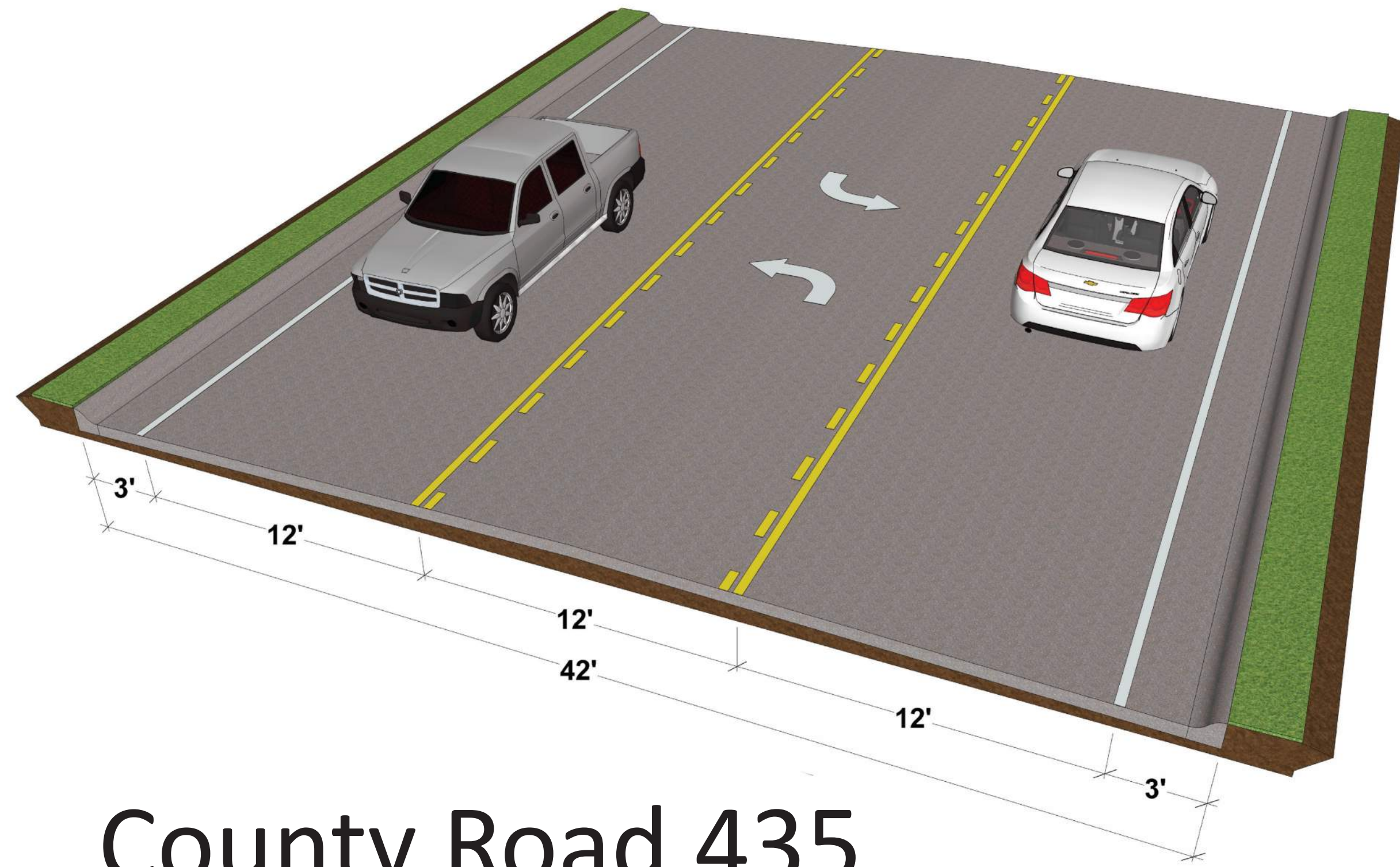
CONCEPT C



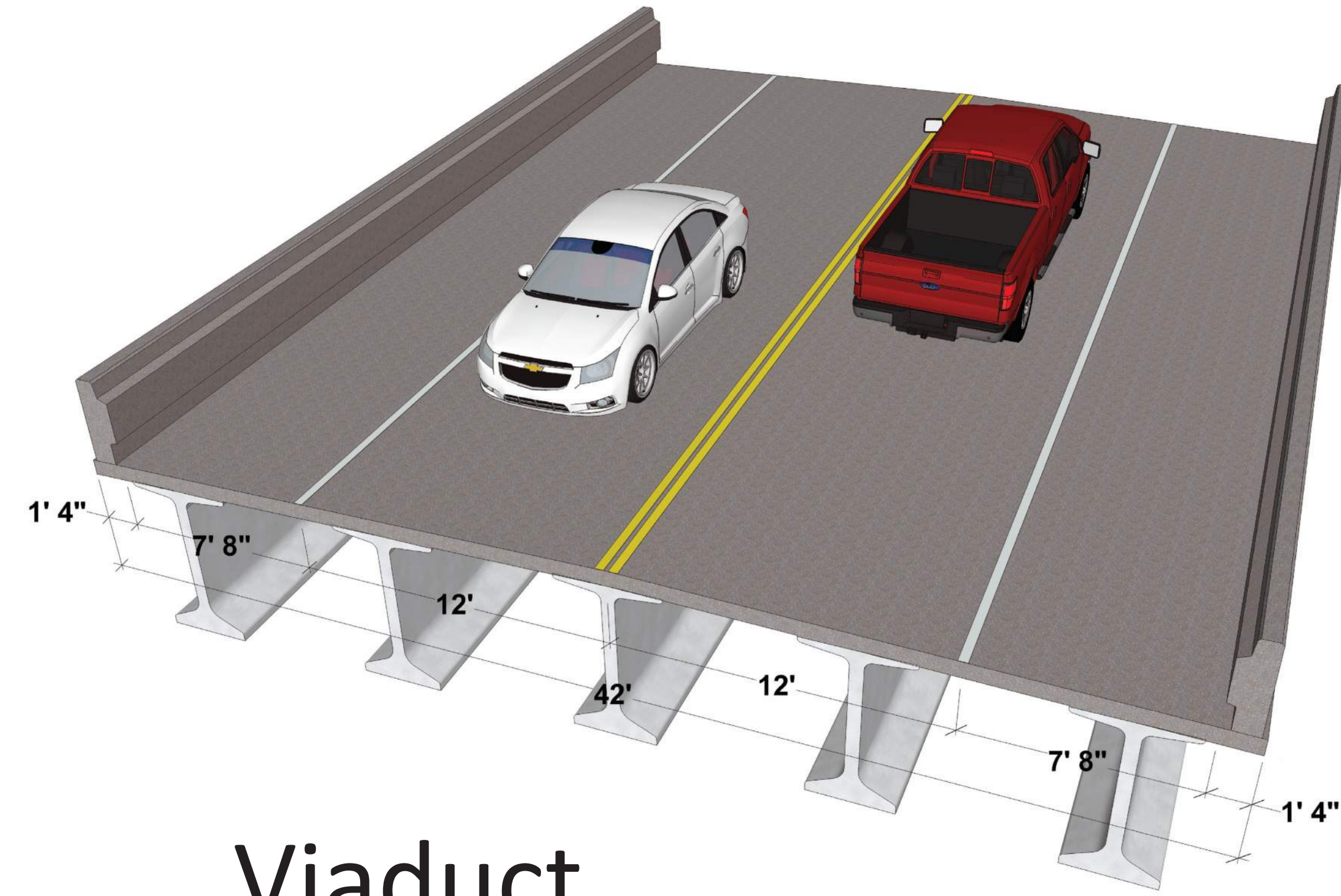
LEGEND



PRELIMINARY PLAN
NOT FINAL - SUBJECT TO CHANGE

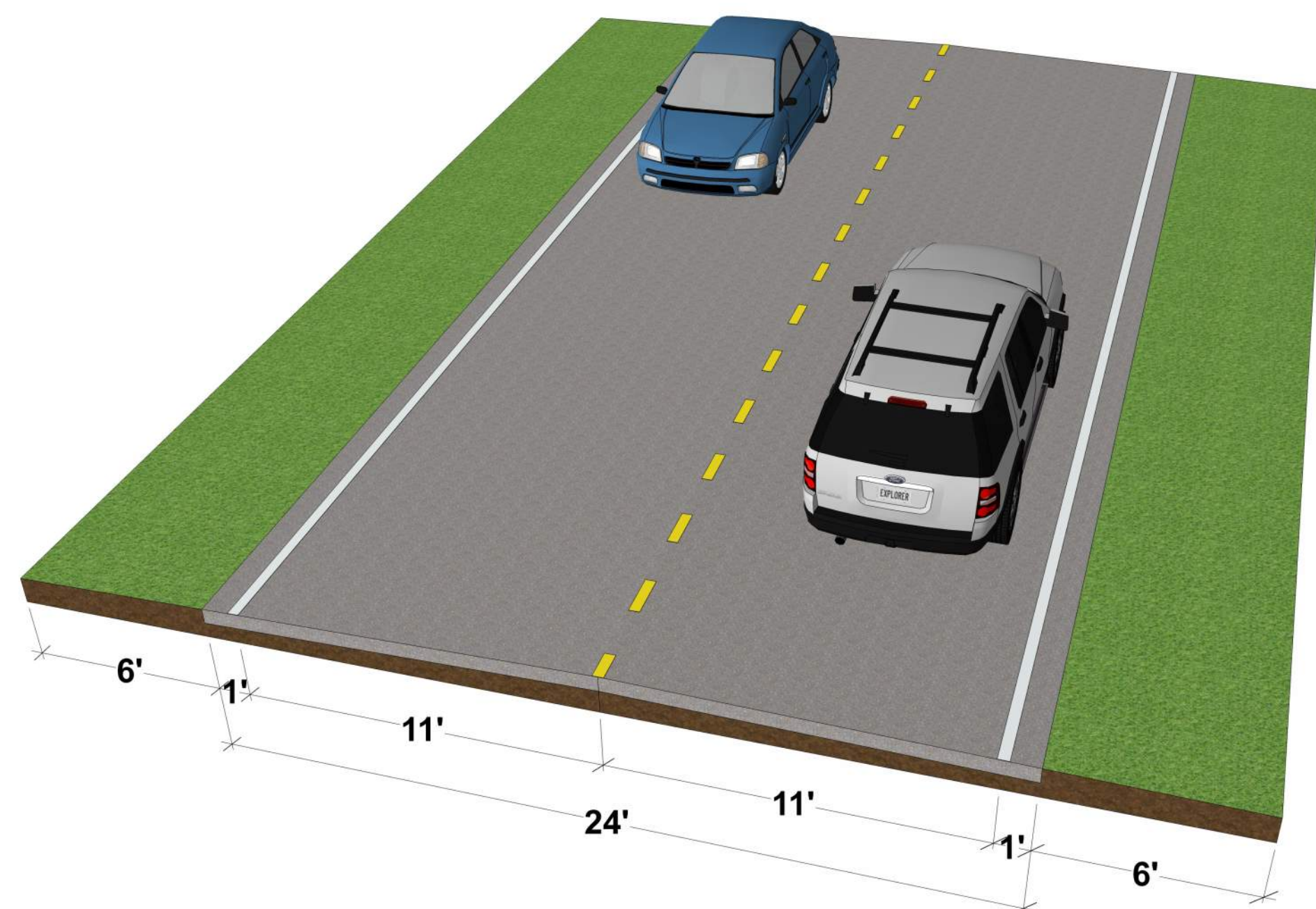


County Road 435

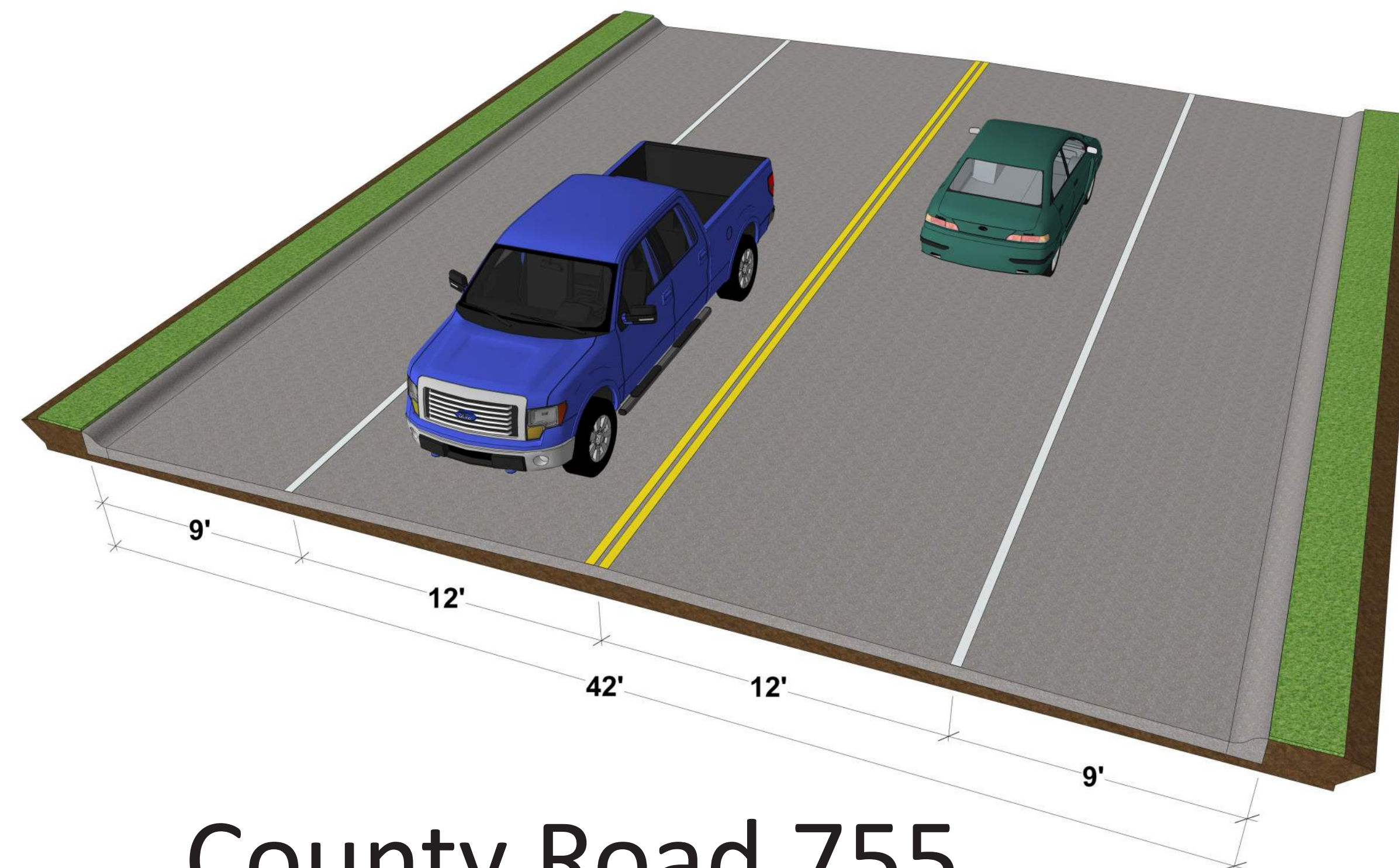


Viaduct

TYPICAL SECTIONS



Road A & Road B



County Road 755

ENVIRONMENTAL SUMMARY



CATEGORY	CRITERIA	NO BUILD	PREFERRED ALTERNATIVE
Potential Right-of-Way Needs			
Construction area	Acres	0	7.3
Potential Displacement / Relocation			
Residential	Number	0	0
Business	Number	0	0
Potential Drive Relocations / Changes in Property Access			
Residential	Number	0	2
Business <i>(including farm fields)</i>	Number	0	10
Wetlands	Number (Acres)	0 (0)	1 (<0.01)
Stream Crossings	Number (Linear Feet)	0 (0)	1 (≈ 40)
Floodplain Impacts	Linear Feet	0	$\approx 1,750$
Noise <i>(move roads closer to receptors)</i>	Yes / No	No	No
Prime & Unique Farmlands	Acres	No	≈ 4
Potential Utility Conflicts <i>(electric, pipes: sanitary, storm, water)</i>	Number	0	4

WAYS TO COMMENT

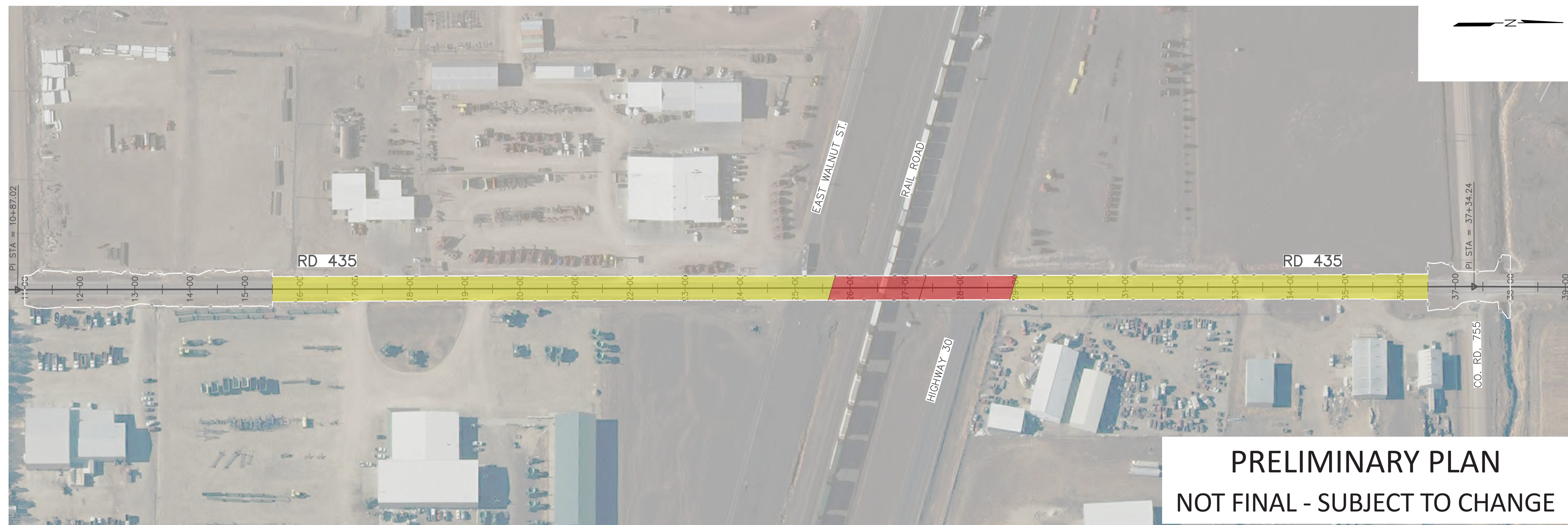


- Talk to us publicly (microphone)
- Talk to us privately (court reporter)
- Hardcopy Comment Form (submit tonight)
- Drop off comments at City Municipal Building
- Email comments: **dburnside@cityoflex.com**
- Mail comments: **Dennis Burnside - City of Lexington**
406 E 7th Street
P.O. Box 70
Lexington, NE 68850

**DEADLINE TO SUBMIT
COMMENTS:
SEPTEMBER 27, 2019**

LEXINGTON EAST VIADUCT

CONCEPT A



LEGEND

- ELEVATED ROADWAY
- NEW BRIDGE

