

RESOLUTION NO. 91-07

WHEREAS, the City of Lexington has previously created Sanitary Sewer Improvement District Nos. 89-3 and 89-4, in order to provide sanitary sewer service to newly annexed areas along south Highway 283; and

WHEREAS, said Sanitary Sewer Project was designed to accommodate future growth at any location within Section 17, Township 9 North, Range 21, West of the 6th P. M. in Dawson County, Nebraska; and

WHEREAS, the City of Lexington has caused to be performed an analysis of the allocation of cost of said sanitary sewer development, and intends to give notice to undeveloped property of the intention of the City of Lexington to recover said costs at the time of future development.

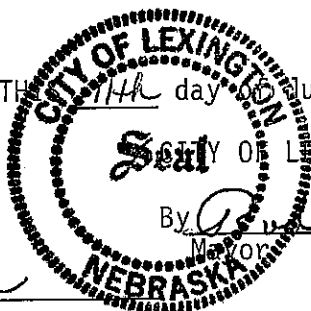
BE IT THEREFORE RESOLVED BY THE MAYOR AND COUNCIL OF THE CITY OF LEXINGTON, NEBRASKA, that as a "SUBDIVISION POLICY" for the City of Lexington, Nebraska, for future development in Section 17, Township 9 North, Range 21, West of the 6th P. M. in Dawson County, Nebraska, as follows:

1. That any future subdivisions or development within said area will be required to connect to existing sanitary sewer improvement;
2. That in addition to the actual cost of extension of mains to any such development, developers shall be required to pay a portion of the cost of original sanitary sewer development, according to the terms of the assessment analysis attached to this resolution as Exhibit "A" and made a part hereof by reference;
3. That this policy shall apply to all real estate within such section that was not included as a part of original Sanitary Sewer Improvement District Nos. 89-3 and 89-4.

PASSED AND APPROVED THIS 11th day of June, 1991.

ATTEST:

Neldene C. Steward
Deputy City Clerk



CITY OF LEXINGTON, NEBRASKA

By Robert L. Hawks
Mayor

ASSESSMENT PLAT FOR SANITARY SEWER EXTENSION DISTRICT NO. 89-3 & SANITARY SEWER EXTENSION DISTRICT NO. 89-4

SCHEDULE OF ASSESSMENTS SANITARY SEWER EXTENSION DISTRICT NO. 89-4

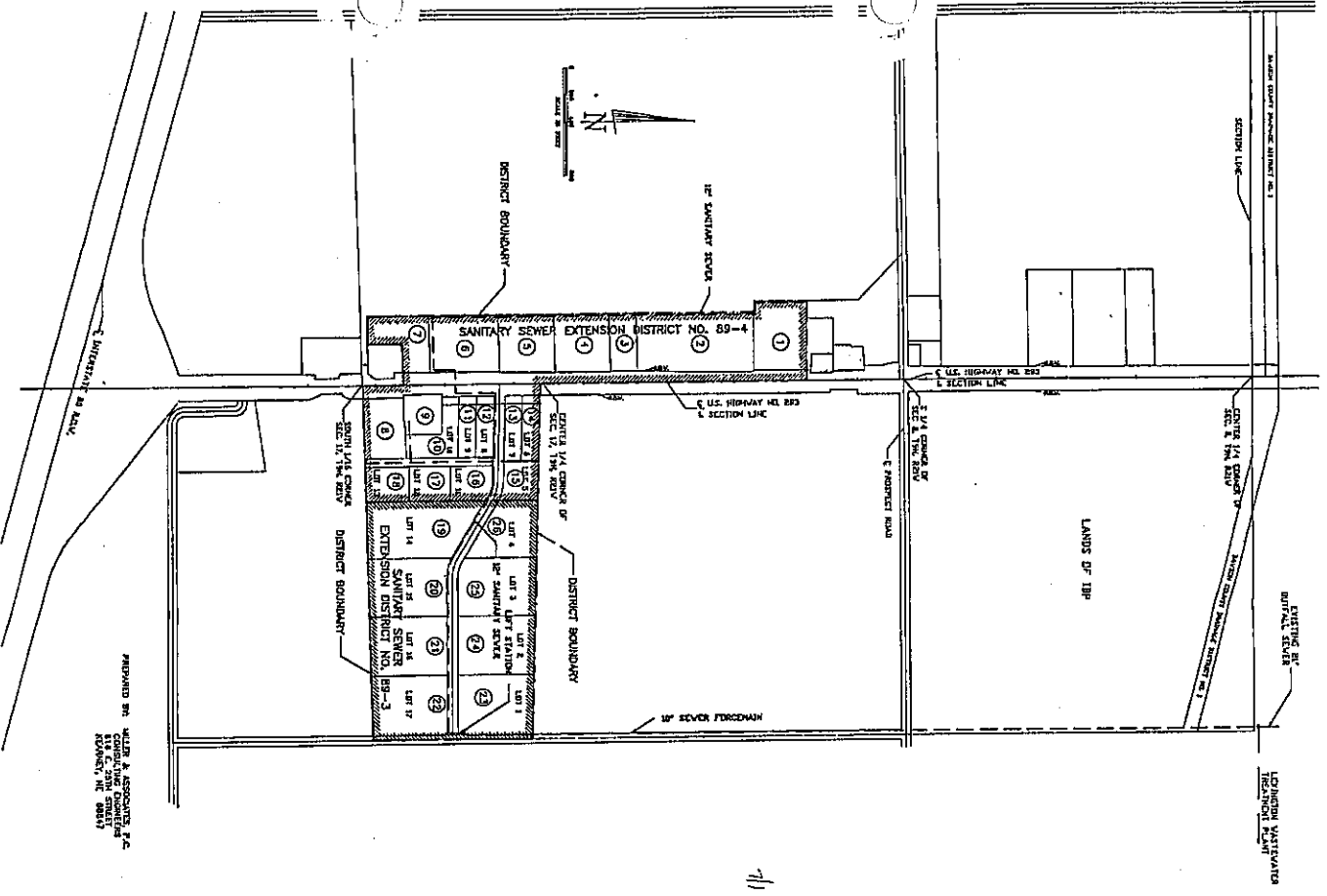
NO.	TRACT OF LAND	OWNER	AREA IN S.F.	ASSESSMENT	FRONTAGE-L.F.	ASSESSMENT	TOTAL
1	A TRACT OF LAND IN THE NE 1/4, NW 1/4, SEC. 17	H. & W. ENTERPRISES, INC.	782,538	\$2,292.21	288.00	\$1,123.88	\$11,425.88
2	A TRACT OF LAND IN THE E 1/2, NW 1/4, SEC. 17	LUIGI BATES	281,143	4,239.77	840.30	18,781.01	24,060.78
3	TRACT AS DESCRIBED IN DEEDS BOOK 123, PG. 830	JAMES F. WILDER C/O CHRY BAR, INC.	82,816	807.56	200.00	4,708.08	5,885.64
4	TRACT AS DESCRIBED IN DEEDS BOOK 110, PG. 753	DORRIS E. WILSON C/O RICHARD FRANKLIN	187,289	1,899.97	400.00	9,416.17	11,416.14
5	TRACT AS DESCRIBED IN DEEDS BOOK 117, PG. 705	ROYAL K. INC. C/O LORNE WALKO	168,889	1,897.06	400.00	9,416.17	11,403.23
6	TRACT AS DESCRIBED IN DEEDS BOOK 124, PG. 240	PAUL PROPERTIES	254,889	2,439.17	500.00	11,270.21	14,209.38
7	TRACT AS DESCRIBED IN DEEDS BOOK 127, PG. 214	BORIS JOSEPHINE BELT	121,418	1,664.87	271.29	8,233.87	11,098.64
8	TRACT AS DESCRIBED IN DEEDS BOOK 125, PG. 47	MICHAEL'S CORPORATION	123,591	1,484.83	308.80	7,271.64	8,766.57
9	TRACT AS DESCRIBED IN DEEDS BOOK 129, PG. 127	HARRY HICKS	78,271	821.89	184.04	4,332.28	5,264.27
10	LOT 10, GREATER LENOXTON ADDITION	LENOXTON STATE BANK AND TRUST COMPANY	81,883	974.86	191.55	4,506.17	5,481.03
11	LOT 9, GREATER LENOXTON ADDITION	LENOXTON STATE BANK AND TRUST COMPANY	44,487	529.78	123.00	2,942.25	3,472.03
12	LOT 8, GREATER LENOXTON ADDITION	LENOXTON STATE BANK AND TRUST COMPANY	42,487	505.81	123.00	2,842.55	3,448.36
13	LOT 7, GREATER LENOXTON ADDITION	LENOXTON STATE BANK AND TRUST COMPANY	46,232	550.44	123.00	2,942.55	3,492.99
14	LOT 6, GREATER LENOXTON ADDITION	LENOXTON STATE BANK AND TRUST COMPANY	46,440	529.11	123.00	2,842.55	3,511.66
15	LOT 5, GREATER LENOXTON ADDITION	LENOXTON STATE BANK AND TRUST COMPANY	77,347	920.89	200.00	5,888.11	6,809.00
16	LOT 4, GREATER LENOXTON ADDITION	LENOXTON STATE BANK AND TRUST COMPANY	82,993	888.11	200.00	7,092.13	8,080.24
17	LOT 3, GREATER LENOXTON ADDITION	LENOXTON STATE BANK AND TRUST COMPANY	83,448	933.51	300.00	7,092.13	8,225.64
18	LOT 2, GREATER LENOXTON ADDITION	LENOXTON STATE BANK AND TRUST COMPANY	84,219	1,002.71	311.00	7,291.07	8,333.78

SCHEDULE OF ASSESSMENTS

SANITARY SEWER EXTENSION DISTRICT NO. 89-3

NO.	TRACT OF LAND	OWNER	AREA IN S.F.	ASSESSMENT	FRONTAGE-L.F.	ASSESSMENT	TOTAL
19	LOT 14, GREATER LENOXTON ADDITION	GREATER LENOXTON CORPORATION	301,833	\$2,383.82	510.80	\$12,019.74	\$14,403.56
20	LOT 15, GREATER LENOXTON ADDITION	GREATER LENOXTON CORPORATION	232,254	2,772.36	421.17	9,814.32	12,586.68
21	LOT 16, GREATER LENOXTON ADDITION	GREATER LENOXTON CORPORATION	227,232	2,700.42	420.54	9,807.92	12,508.34
22	LOT 17, GREATER LENOXTON ADDITION	GREATER LENOXTON CORPORATION	226,811	2,686.51	423.03	10,193.71	12,880.22
23	LOT 1, GREATER LENOXTON ADDITION	GREATER LENOXTON CORPORATION	227,970	2,772.74	424.76	10,231.43	13,004.17
24	LOT 2, GREATER LENOXTON ADDITION	GREATER LENOXTON CORPORATION	227,466	2,700.23	420.04	9,807.92	12,586.15
25	LOT 3, GREATER LENOXTON ADDITION	GREATER LENOXTON CORPORATION	232,728	2,763.89	422.28	9,940.88	12,706.14
26	LOT 4, GREATER LENOXTON ADDITION	GREATER LENOXTON CORPORATION	184,423	1,881.43	510.70	12,022.08	14,903.52

21937.00 54100.48 106,037.04



PREPARED BY:
WILSON & ASSOCIATES, P.C.
118 E. 20th STREET
ROANOKE, VA 24060