

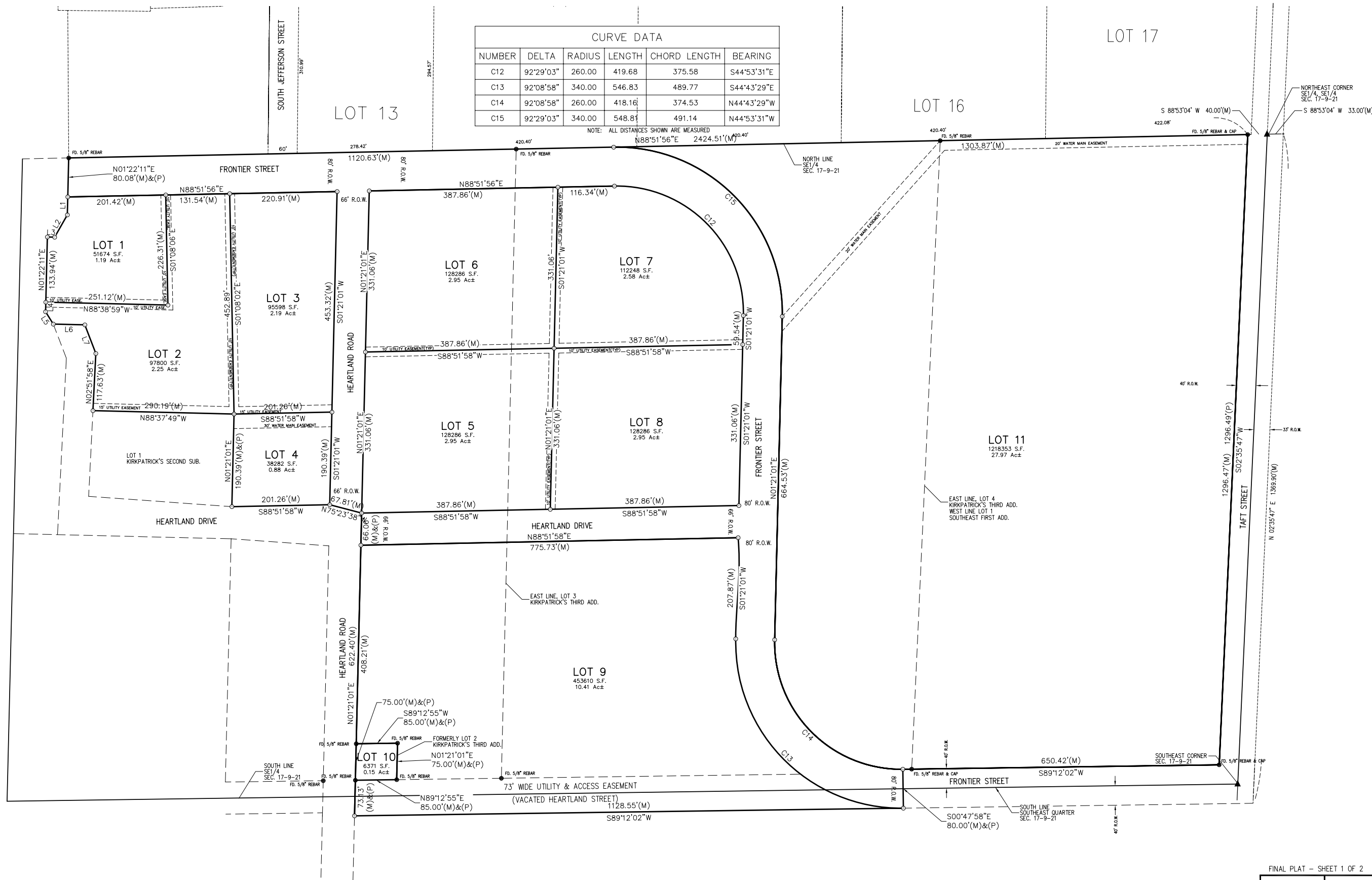
SOUTHEAST SECOND ADDITION
 A REPLAT OF LOT 1, SOUTHEAST FIRST ADDITION TO THE CITY OF LEXINGTON, DAWSON COUNTY, NEBRASKA,
 AND LOTS 2, 3, AND 4, KIRKPATRICK'S THIRD ADDITION TO THE CITY OF LEXINGTON, DAWSON COUNTY, NEBRASKA.

| CURVE DATA | | | | | |
|------------|-----------|--------|--------|--------------|-------------|
| NUMBER | DELTA | RADIUS | LENGTH | CHORD LENGTH | BEARING |
| C12 | 92°29'03" | 260.00 | 419.68 | 375.58 | S44°53'31"E |
| C13 | 92°08'58" | 340.00 | 546.83 | 489.77 | S44°43'29"E |
| C14 | 92°08'58" | 260.00 | 418.16 | 374.53 | N44°43'29"W |
| C15 | 92°29'03" | 340.00 | 548.81 | 491.14 | N44°53'31"W |

NOTE: ALL DISTANCES SHOWN ARE MEASURED
 N88°51'56"E 2424.51'(M)

| LINE DATA | | |
|-----------|--------|-------------|
| NUMBER | LENGTH | BEARING |
| L1 | 37.04 | N01°22'11"E |
| L2 | 52.70 | N29°41'25"E |
| L3 | 15.00 | S88°37'49"E |
| L4 | 19.67 | N01°22'11"E |
| L5 | 29.95 | N32°01'44"W |
| L6 | 64.87 | N88°37'49"W |
| L7 | 63.01 | N20°58'19"W |

NOTE: ALL DISTANCES SHOWN ARE MEASURED AND PLATTED



SCALE IN FEET
 0 50 100 200

○ = CORNERS ESTABLISHED (5/8" x 24" REBAR W/ LS 568 CAP)
 + = CALCULATED POINTS
 ● = CORNERS FOUND
 (M) = MEASURED DISTANCE
 (P) = PLAT DISTANCE
 (R) = RECORDED DISTANCE

SECTION CORNER TIES

SOUTHEAST CORNER, SOUTHEAST QUARTER SEC. 17, T9N, R21W FOUND 1" REBAR
 48.1'-NE - NAIL IN TOP FENCE POST
 42.9'-NE - HOLE IN CMP
 47.0'-SE - HOLE IN CMP
 33.7'-SW - NAIL & CAP IN POWER POLE
 45.4'-SW - HOLE IN CMP
 43.0'-NW - N & CAP IN POWER POLE

EAST QUARTER CORNER SEC. 17, T9N, R21W FOUND 1" REBAR
 33.0'-WEST - CONC. WITNESS CORNER
 NO OTHER TIES AVAILABLE

JUL 19, 2011 10:42:02 Location: G:\Projects\127127-01-10-11\DWG-Dwg\Sheet Drawings\SH_FINAL_PLAT-SE_2nd Add.dwg

