

WESLEYAN ADDITION REPLAT
AN ADDITION TO THE CITY OF LEXINGTON, DAWSON COUNTY, NEBRASKA



CORNER TIES:

- (A) SW CORNER E1/2 NE1/4 SECTION 17-T9N-R21W**
FOUND A 5/8" REBAR WITH A PLASTIC CAP STAMPED "L.S. 568" 1' DEEP IN CORN FIELD
S 73' TO AN EAST-WEST FENCE LINE
SW 87.25' TO A FOUND 60D CHAIR NAIL IN THE EAST FACE OF A POWER POLE (1' ABOVE GROUND)
(NO OTHER TIES AVAILABLE)
- (B) NW CORNER E1/2 NE1/4 SECTION 17-T9N-R21W**
FOUND A CHISELED "X" IN CONCRETE. SET A MAG NAIL IN CENTER OF CHISELED "X"
WSW 50.86' TO A SET MAG NAIL IN THE NORTH FACE OF A POWER POLE (3' ABOVE GROUND)
S 33.13' TO A 5/8" REBAR WITH A PLASTIC CAP STAMPED "L.S. 568" (33.00'R)
S 50.01' TO A 5/8"x24" REBAR WITH A PLASTIC CAP STAMPED "L.S. 704"
ENE 155.45' TO A SET CHISELED "X" IN THE SW CORNER OF A CONCRETE SIGN BASE FOR NEBRASKA TRUCK EQUIPMENT COMPANY IN CENTERLINE JOINT OF AN EAST-WEST CONCRETE ROADWAY
- (C) NE CORNER E1/2 NE1/4 SECTION 17-T9N-R21W**
FOUND A SPIKE IN A 2" OPEN TOP PIPE 0.3' DEEP IN ASPHALT ROADWAY
SW 47.46' TO A 5/8" REBAR WITH A PLASTIC CAP STAMPED "L.S. 568"
SSW 60.94' TO A 5/8"x24" REBAR WITH A PLASTIC CAP STAMPED "L.S. 704"
N 35.74' TO A SET MAG NAIL IN THE EAST FACE OF A POWER POLE
NE 40.30' TO A SET MAG NAIL IN THE SE FACE OF A CUT OFF POWER POLE ON CENTERLINE OF AN EAST-WEST COUNTY ROAD
ON CENTERLINE OF A COUNTY ROAD SOUTH
- (D) SE CORNER E1/2 NE1/4 SECTION 17-T9N-R21W**
FOUND A 1" OPEN TOP PIPE 0.3' DEEP
NNE 68.32' TO A SET MAG NAIL IN THE NE FACE OF A POWER POLE (1' ABOVE GROUND)
W 32.94' TO A FOUND CHISELED "X" IN THE TOP OF A CONCRETE MONUMENT (33.00'R)
SE 48.18' TO A SET 5/8"x24" REBAR
SSW 136.38' TO A FOUND 5/8" REBAR
- (E) NW CORNER NE1/4 SECTION 17-T9N-R21W**
FOUND A DRILL HOLE IN CONCRETE
N 0.3' TO AN EAST-WEST EXPANSION JOINT (0.3'R)
W 8.1' TO A NORTH-SOUTH EXPANSION JOINT (8.1'R)
SW 74.39' TO A SET CHISELED "X" IN CONCRETE LIGHT POLE BASE
NW 75.49' TO A SET CHISELED "X" IN CONCRETE LIGHT POLE BASE
NNE 57.2' TO THE NEAR FACE OF A SIGN POST (57.4'R)
NE 83.60' TO A SET CHISELED "X" IN CONCRETE LIGHT POLE BASE
SE 70.87' TO A SET CHISELED "X" IN CONCRETE LIGHT POLE BASE

LEGAL DESCRIPTION:

LOT 1, WESLEYAN ADDITION IN THE CITY OF LEXINGTON, DAWSON COUNTY, NEBRASKA.

SURVEYOR'S CERTIFICATE:

I, ADAM J. GOERTZEN, NEBRASKA REGISTERED LAND SURVEYOR NO. 704, DO HEREBY CERTIFY THAT THE SURVEY ON "WESLEYAN ADDITION REPLAT", AN ADDITION TO THE CITY OF LEXINGTON, DAWSON COUNTY, NEBRASKA, WAS PERFORMED UNDER MY DIRECT SUPERVISION, THE LOTS ARE WELL AND ACCURATELY STAKED OFF AND MARKED, THE DIMENSIONS OF THE LOTS ARE AS SHOWN ON THE ABOVE PLAT, THE LOTS BEAR THEIR OWN NUMBER, AND THAT THE SURVEY WAS MADE USING KNOWN AND RECORDED MONUMENTS. ALL INFORMATION SHOWN ON THE ACCURATE AND CORRECT TO THE BEST OF MY KNOWLEDGE AND BELIEF.

ADAM J. GOERTZEN
NEBR. REG. L.S. NO. 704
DATE: _____

APPROVAL OF THE CITY OF LEXINGTON PLANNING COMMISSION:

THE UNDERSIGNED, CHAIRMAN OF THE PLANNING COMMISSION FOR THE CITY OF LEXINGTON, DAWSON COUNTY, NEBRASKA, DOES HEREBY CERTIFY THAT THE FOREGOING PLAT OF "WESLEYAN ADDITION REPLAT", AN ADDITION TO THE CITY OF LEXINGTON, DAWSON COUNTY, NEBRASKA, WAS SUBMITTED TO THE CITY OF LEXINGTON PLANNING COMMISSION AT ITS REGULAR MEETING ASSEMBLED ON THE _____ DAY OF _____, 20____, AND UPON MOTION DULY MADE AND SECONDED, SAID PLAT WAS APPROVED IN ALL RESPECTS BY A MAJORITY VOTE OF SUCH COMMISSION.

DATED THIS _____ DAY OF _____, 20____.

CHAIRMAN _____

DEDICATION:

KNOW ALL MEN BY THESE PRESENT, THAT HAR TRANSPORTATION INC., BY AND THROUGH _____ (PRINT NAME), ITS _____ (PRINT TITLE) AND COMMUNITY DEVELOPMENT AGENCY OF THE CITY OF LEXINGTON _____ (PRINT NAME), ITS _____ (PRINT TITLE), BEING THE OWNERS, HAVE CAUSED THE SAME TO BE SURVEYED, SUBDIVIDED, PLATTED AND DESIGNATED AS "WESLEYAN ADDITION REPLAT", AN ADDITION TO THE CITY OF LEXINGTON, DAWSON COUNTY, NEBRASKA, AND SAID OWNERS HEREBY RATIFY AND APPROVE THE DISPOSITION OF THEIR PROPERTY AS SHOWN ON THE ABOVE PLAT.

DATED THIS _____ DAY OF _____, 20____.

(PRINT NAME) COMMUNITY DEVELOPMENT AGENCY OF THE CITY OF LEXINGTON

(PRINT TITLE)

ACKNOWLEDGEMENT:

STATE OF _____)
COUNTY OF _____)ss

THE FOREGOING INSTRUMENT WAS ACKNOWLEDGED BEFORE ME THIS _____ DAY OF _____, 20____, BY _____ (PRINT NAME), ITS _____ (PRINT TITLE), HAR TRANSPORTATION INC.

NOTARY PUBLIC _____ (SEAL)
MY COMMISSION EXPIRES _____

ACKNOWLEDGEMENT:

STATE OF _____)
COUNTY OF _____)ss

THE FOREGOING INSTRUMENT WAS ACKNOWLEDGED BEFORE ME THIS _____ DAY OF _____, 20____, BY _____ (PRINT NAME), ITS _____ (PRINT TITLE), COMMUNITY DEVELOPMENT AGENCY OF THE CITY OF LEXINGTON

NOTARY PUBLIC _____ (SEAL)
MY COMMISSION EXPIRES _____

APPROVAL OF THE LEXINGTON, NEBRASKA, CITY COUNCIL:

THE ABOVE FOREGOING PLAT WAS SUBMITTED TO THE CITY COUNCIL IN AND FOR THE CITY OF LEXINGTON, DAWSON COUNTY, NEBRASKA, AND DULY CONSIDERED BY THIS COUNCIL AT ITS REGULAR MEETING AS ASSEMBLED ON THE _____ DAY OF _____, 20____, AND UPON MOTION DULY MADE AND SECONDED, THE SAME WAS APPROVED IN ALL RESPECTS BY A MAJORITY VOTE OF THE MEMBERS OF SUCH COUNCIL.

DATED THIS _____ DAY OF _____, 20____.

MAYOR _____ (SEAL)
ATTEST: _____
CITY CLERK

RESOLUTION:

BE IT RESOLVED BY THE MAYOR AND COUNCIL OF THE CITY OF LEXINGTON, NEBRASKA, THAT THE PLAT OF "WESLEYAN ADDITION REPLAT", AN ADDITION TO THE CITY OF LEXINGTON, DAWSON COUNTY, NEBRASKA, DULY MADE OUT, ACKNOWLEDGED AND CERTIFIED, AND THE SAME HEREBY IS APPROVED, ACCEPTED AND ORDERED FILED AND RECORDED IN THE OFFICE OF DEEDS OF DAWSON COUNTY, NEBRASKA.

MAYOR _____ (SEAL)

ATTEST: _____
CITY CLERK

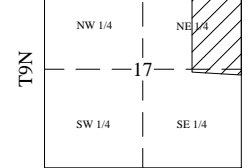
STATE OF NEBRASKA)
COUNTY OF DAWSON)ss

THIS IS TO CERTIFY THAT THIS INSTRUMENT WAS FILED FOR RECORD IN THE REGISTER OF DEEDS OFFICE AT _____ M ON THIS _____ DAY OF _____, 20____.

REGISTER OF DEEDS

VICINITY SKETCH

DAWSON COUNTY
NEBRASKA
R21W



NOTE: ALL BEARINGS ARE ASSUMED.

LEGEND

- MONUMENT FOUND
- CALCULATED POINT
- D DEEDED DISTANCE
- G GOVERNMENT DISTANCE
- M MEASURED DISTANCE
- P PLATTED DISTANCE
- R RECORDED DISTANCE

GRAPHIC SCALE



JEO CONSULTING GROUP INC
Ph: 308.381.7428
308 West 3rd Street
Grand Island, NE 68801

WESLEYAN ADDITION REPLAT

**A REPLAT OF LOT 1
WESLEYAN ADDITION
CITY OF LEXINGTON
DAWSON COUNTY, NEBRASKA**

PROJECT NO.	R121357
DATE	11/2/2012
DRAWN BY	AJG
FILE NAME	121357 Plat.dwg
FIELD BOOK	DAWSON CO #1
FIELD CREW	AG/EG
SURVEY FILE NO.	
REVIEW BY	
REVIEW DATE	
REVISIONS	