

URBAN DESIGN

Corridor Enhancement

As the front door to a community, a corridor's first impression on visitors is crucial, as it will either draw them into a town, or encourage them to continue on their way. Usually utilitarian in appearance, these access routes are an opportunity for small towns and can be significantly improved by modest aesthetic improvements such as trees and shrub plantings, attractive lighting, and trails and sidewalks. Interstate 80 is lined with small towns similar to Lexington, but by implementing these simple improvements along key corridors, such as Plum Creek Parkway and Highway 30, Lexington can enhance its reputation for being a destination and draw travelers off the beaten path and further into the community.

Plum Creek Parkway Entrance Streetscaping

As the primary gateway into the City of Lexington, the I-80 exit for Plum Creek Parkway should provide an enjoyable experience and draw people toward the heart of the town. The first crucial step in this process will be enhancing the initial view from Interstate 80. Landscaping along the Interstate 80 corridor will help draw attention to the exit as a destination, and a sculpted and landscaped berm will provide an appealing buffer to the sand and gravel pits located just north of the interstate on the east side of the exit.

With their prominent location on Plum Creek Parkway, Walmart, NDOR, and the Military Museum will benefit from additional landscaping, dramatically increasing the 'curb' appeal to visitors and providing a sense of place and community pride. A new trail will connect the existing trail along Plum Creek Parkway to a proposed recreation area on the current site of the gravel and sand pits.

As can be seen in the image of proposed improvements to Plum Creek Parkway, the experience for pedestrians and bikers utilizing the trail could be greatly enhanced by implementing some of these modest improvements. Similar streetscape elements such as landscaping, lighting, and wayfinding will further beautify Lexington's 'front door' as visitors travel north along the corridor.

Corridor Enhancements: Plum Creek Parkway Streetscape

Native plantings, fencing, and a meandering trail along the Plum Creek Parkway create an attractive community entrance.



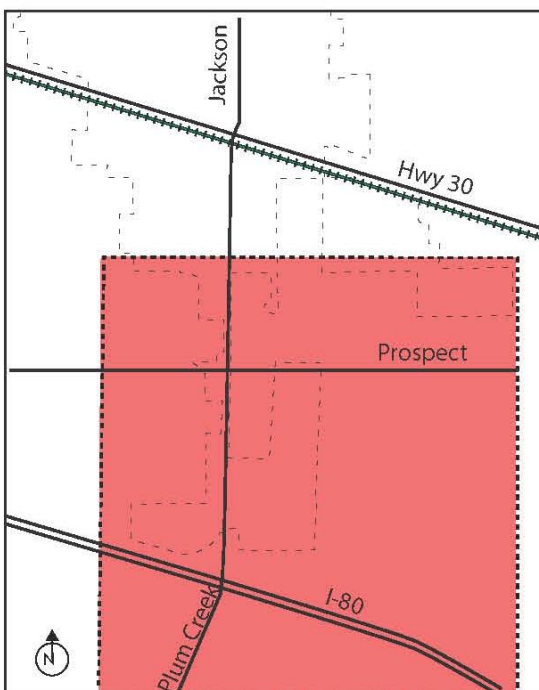
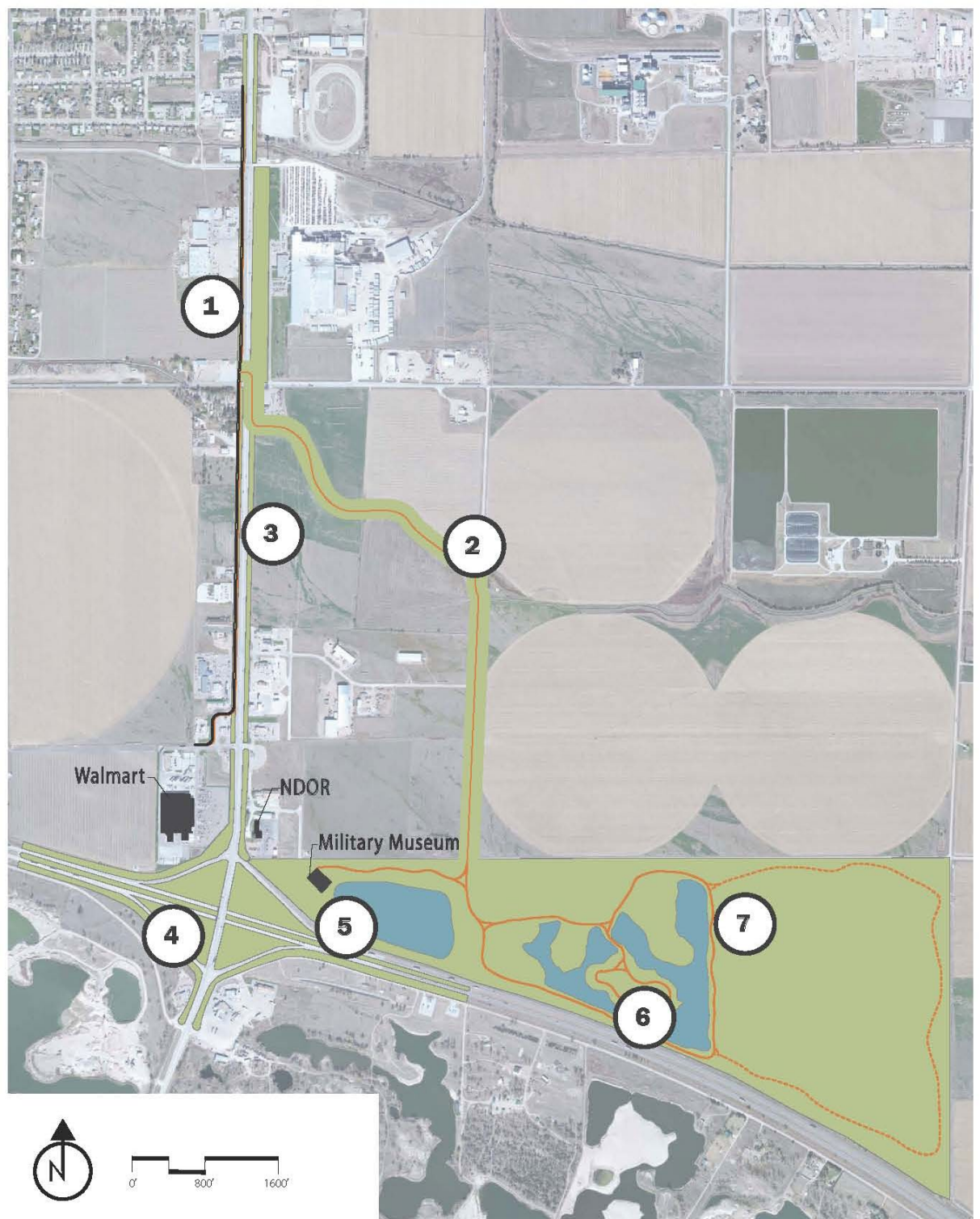
Existing Conditions along Plum Creek Parkway



Proposed Improvements to Plum Creek Parkway

Corridor Enhancements: Plum Creek Parkway Entrance Streetscaping

- ① Existing Trail
- ② New Trail
- ③ Enhanced Streetscape
- ④ I-80 ROW Landscaping
- ⑤ Landscaped Grounds
- ⑥ Sculptured and Landscaped Berm
- ⑦ Future Recreation Area Phase 1 & 2



LOCATION MAP

Figure 28: Plum Creek Parkway Entrance, Lexington

“The Lex-Plan 2013”

ACHIEVE

Corridor Enhancements: Highway 30 Road Diet

Reducing Highway 30 to three lanes provides more space for landscaping, creating a safer and more beautiful front door into downtown Lexington



Existing Conditions along Highway 30



Proposed Improvements to Highway 30

Figure 29: Highway 30 Diet

Highway 30 Road Diet

The Highway 30 Corridor is another ideal gateway to implement streetscape enhancements in order to create a more appealing experience for visitors coming from the east and west. By implementing a 'road diet,' whereby the number of lanes is reduced, which allows for enhanced landscaping, sidewalks, and lighting along the highway, the corridor can become appealing to pedestrians and bicyclists, as well as vehicular traffic.

Downtown Gateway

The viaduct over the railroad lines is a major landmark for the community. Sculptural elements, such as colored LED lights on the grain elevators and Jackson Street Bridge help establish a sense of place and could be incorporated to create an iconic gateway into Downtown Lexington.

Corridor Enhancements: Downtown Gateway

Colored LED lights on the Jackson Street bridge and grain elevators create an iconic entrance to downtown Lexington

