

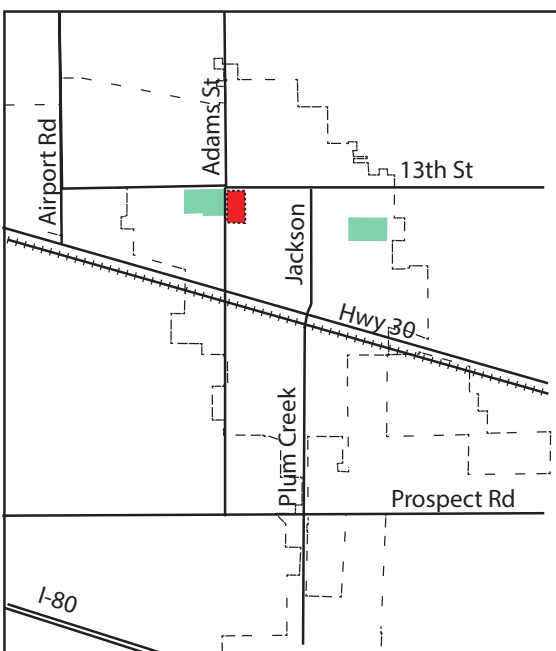
INFILL DEVELOPMENT

Lexington contains many opportunities to develop within the existing boundaries of the town. Redeveloping these areas creates an opportunity for more activity and community growth in the heart of Lexington. Additionally, infill development will occur within existing neighborhoods as the housing stock ages and homes need to be rebuilt. As infill occurs, guidance should be provided to ensure that new development is contextual with the existing neighborhood fabric.

Infill Development: Adams Street Redevelopment

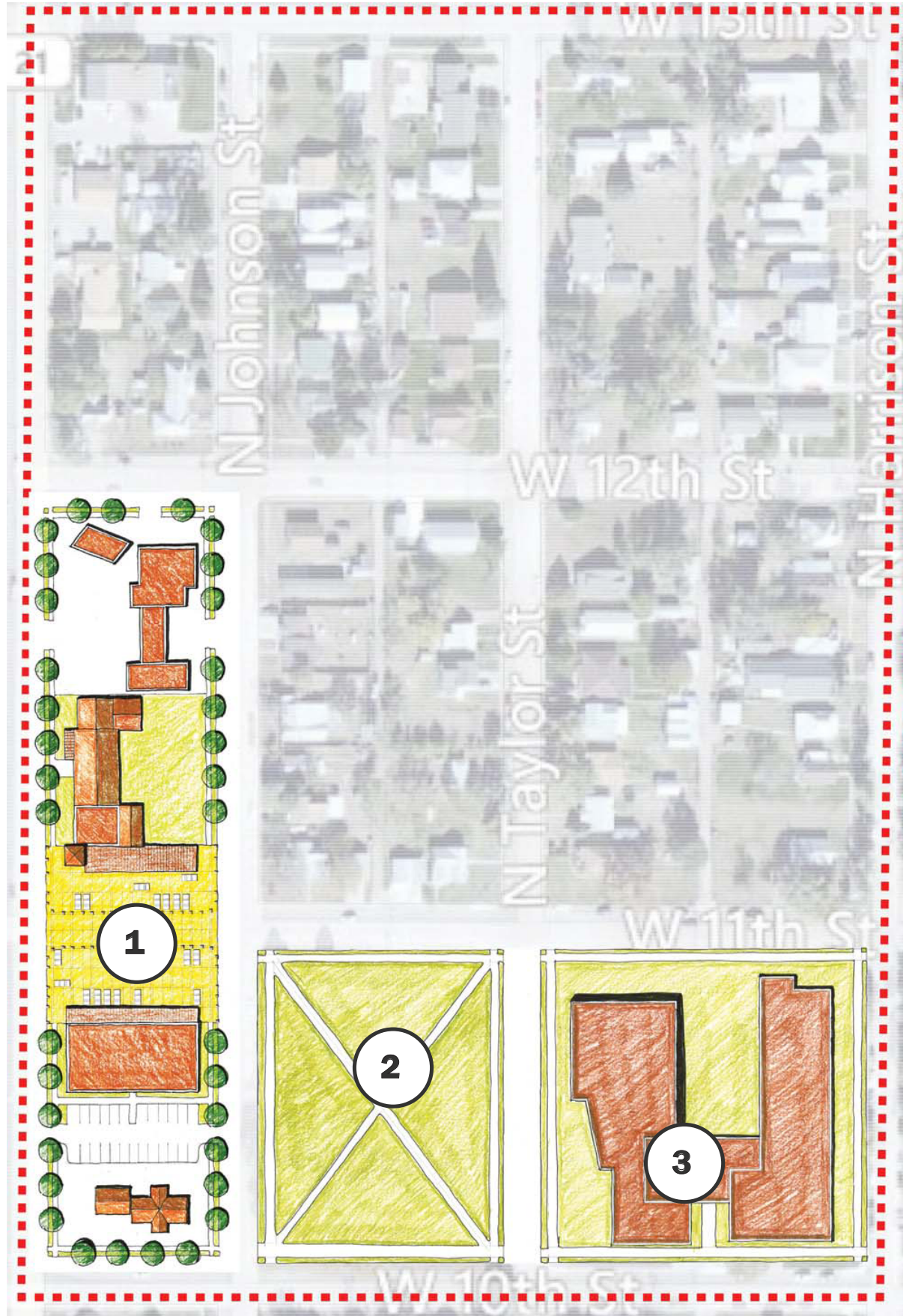
Redevelopment Area

- 1 Proposed Market Plaza
- 2 New Park/Playground
- 3 School Additions



LOCATION MAP

Figure 33: Adams Street Redevelopment, Lexington



Adams Street Redevelopment

One area of opportunity is the Adams Street Redevelopment Area, which is bounded by 13th Street on the north, 10th Street on the south, Adams Street on the west, and Harrison Street on the east. The redevelopment area includes an expansion of Bryan Elementary School, a new joint use park, and a new plaza on 11th Street between Johnson Street and Adams Street. Eleventh Street will continue to function as a vehicular street; bollards will separate vehicular traffic from pedestrian while a different paving texture will delineate the plaza. The space will function as a 'parking plaza,' where a grid pattern on the ground plane demarcates drive aisles and parking stalls. The space can also be closed off to vehicles, allowing for street vendors, food trucks, farmers market and other programmed activities to take place on the plaza. Arcades on the buildings fronting the plaza could provide a place for temporary stores and other 'pop up' shops to set up, creating an incubator space for small businesses. A new mixed use building is proposed on the south side of the plaza, helping to define the space while fulfilling the need for more high quality apartment type housing in Lexington. Neighborhood residents will provide a critical mass of people, helping to make the plaza a vibrant, active space.