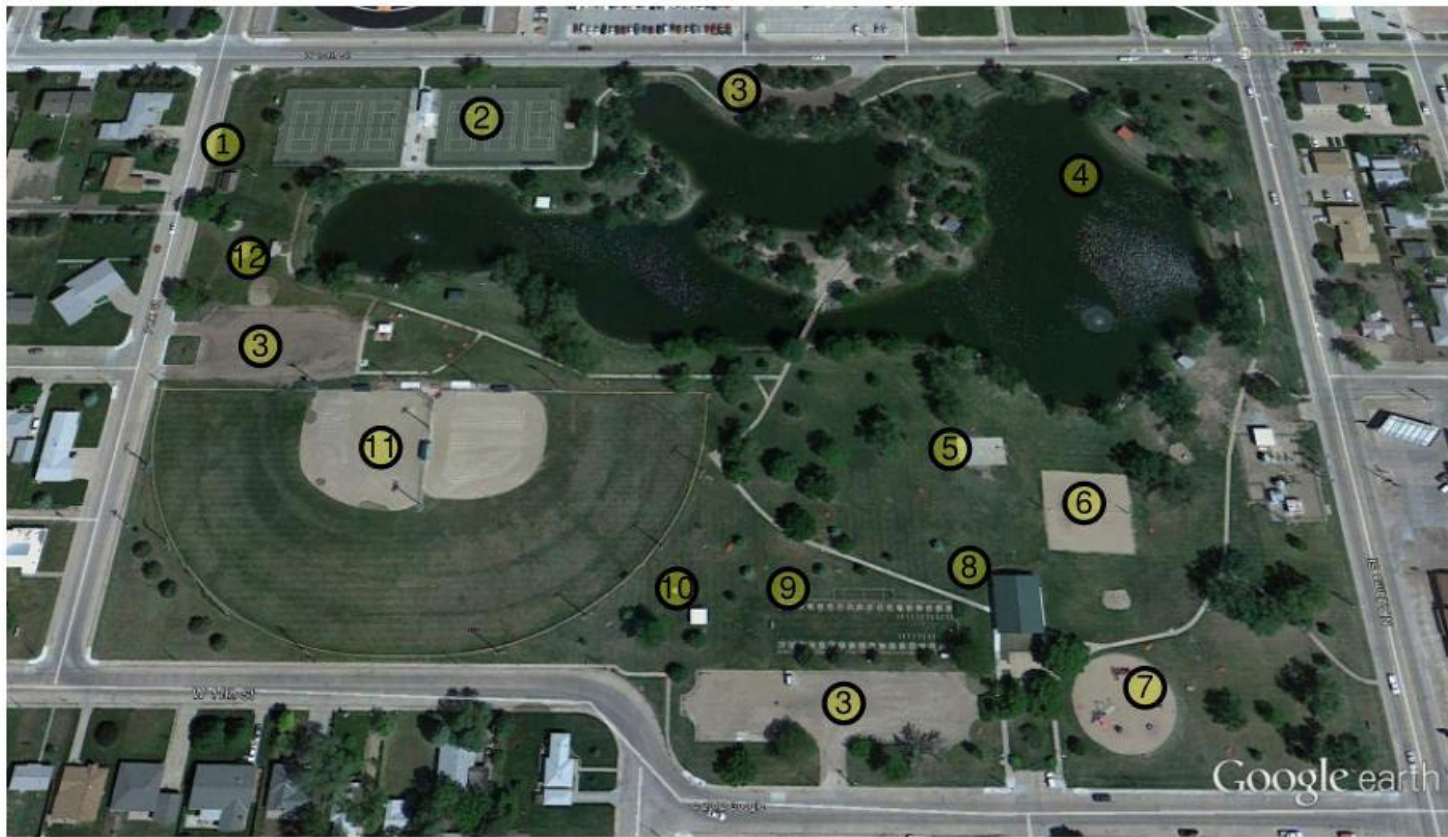


Park System Analysis and Service Area

Plum Creek Park



LEGEND

- ① Well House
- ② Tennis Courts
- ③ Parking
- ④ Lake
- ⑤ Basketball
- ⑥ Sand Volleyball
- ⑦ Play Structure
- ⑧ Picnic Shelter w/Restrooms
- ⑨ Horseshoe Pits
- ⑩ Small Picnic Shelter
- ⑪ Ballfields
- ⑫ Restrooms

Figure 42: Plum Creek Park, Lexington



Park Component	Condition		Capacity		Notes
	Poor	Fair/Good	Under	At/Over	
Vegetation (Trees, shrubs, turf)		X		X	Turf dry, lots of large old trees, some new trees
Play Areas		X		X	Several areas of open green space
Sports Fields	X			X	1 lighted softball/baseball field without dugouts
Sports Courts		X		X	6 lighted tennis courts (3 lighted), 1 sand volleyball in Aquatic Center compound
Walks/Trails	X		X		Gravel roadway, concrete walkways, perimeter sidewalks
Play Equipment		X		X	1 play structure, 1 swing set
Structures			X	X	Maintenance building, picnic shelter with restrooms, concession stand with restrooms (Tennis Assoc. building), 1 smaller picnic shelter, 1 gazebo
Picnic Facilities			X	X	Picnic tables, trash cans, and 1 barbeque grill
Drinking Water	X			X	Hydrants only
Restrooms		X		X	2 permanent restrooms, 3 portable toilets
Parking			X	X	1 large off-street parking lot
Lighting		X		X	Lighted parking lot, the courts and the field
Benches			X	X	Throughout park
Signage		X		X	Sign in park on east side by driveway
Miscellaneous			X	X	Family Aquatic Center is located in the park, County museum and lake are adjacent to park



Source: JEO Consulting Group, Inc., 2013

Table: 45: Plum Creek Park, Lexington

PLUM CREEK PARK
13th Street and Adams Street
23 acres