

Lexington

PROFILE

PUBLIC FACILITIES AND UTILITIES

State and local governments provide a number of services for their citizens. The people, buildings, equipment and land utilized in the process of providing these services are referred to as public facilities.

Public facilities represent a wide range of buildings, utilities, and services that are provided and maintained by the different levels of government. These facilities are provided to ensure the safety, well-being and enjoyment of the residents of a jurisdiction. Facilities and services provide city residents with social, cultural, educational, and recreational opportunities, as well as law enforcement and fire protection services. It is important for all levels of government to anticipate the future demand for their goods and services if they are to remain strong and vital.

The first step is to evaluate the ability of the city to meet existing and future demand while determining the level of services that will need to be provided. The analyses of existing facilities as well as the future demand for services are contained in the Facilities Plan. Alternatively there are some services not provided by the local or state governments but are provided by non-governmental, private or non-profit organizations for the community. These organizations are equally important providers of services to the community and therefore should not be overlooked.

INTRODUCTION

The Community Facilities for Lexington are divided into the following categories:

Parks and Recreational
Facilities

Educational Facilities

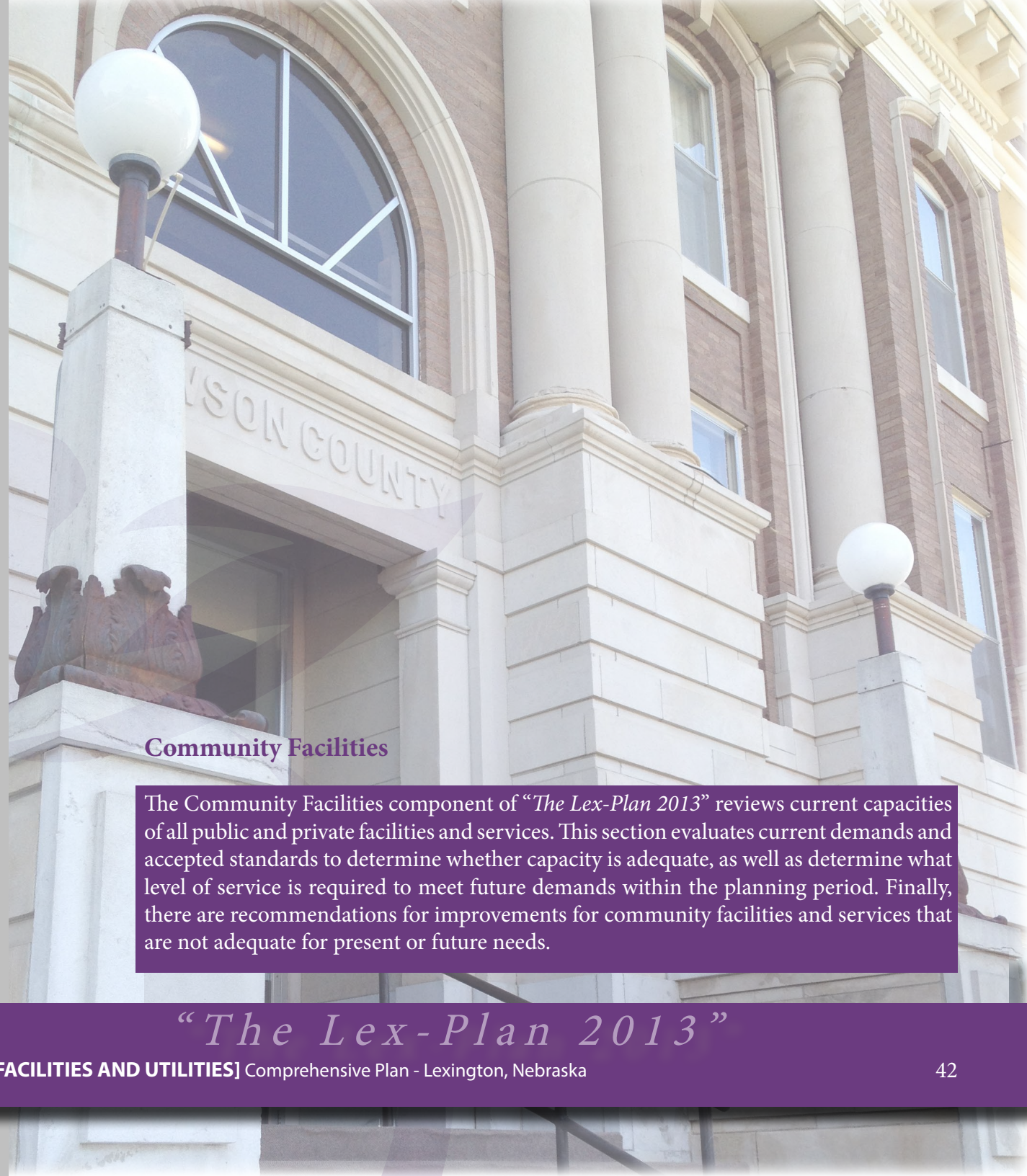
Police, Fire and Rescue

City Buildings

Communication Facilities

Health Facilities

Public Utilities



Community Facilities

The Community Facilities component of “*The Lex-Plan 2013*” reviews current capacities of all public and private facilities and services. This section evaluates current demands and accepted standards to determine whether capacity is adequate, as well as determine what level of service is required to meet future demands within the planning period. Finally, there are recommendations for improvements for community facilities and services that are not adequate for present or future needs.

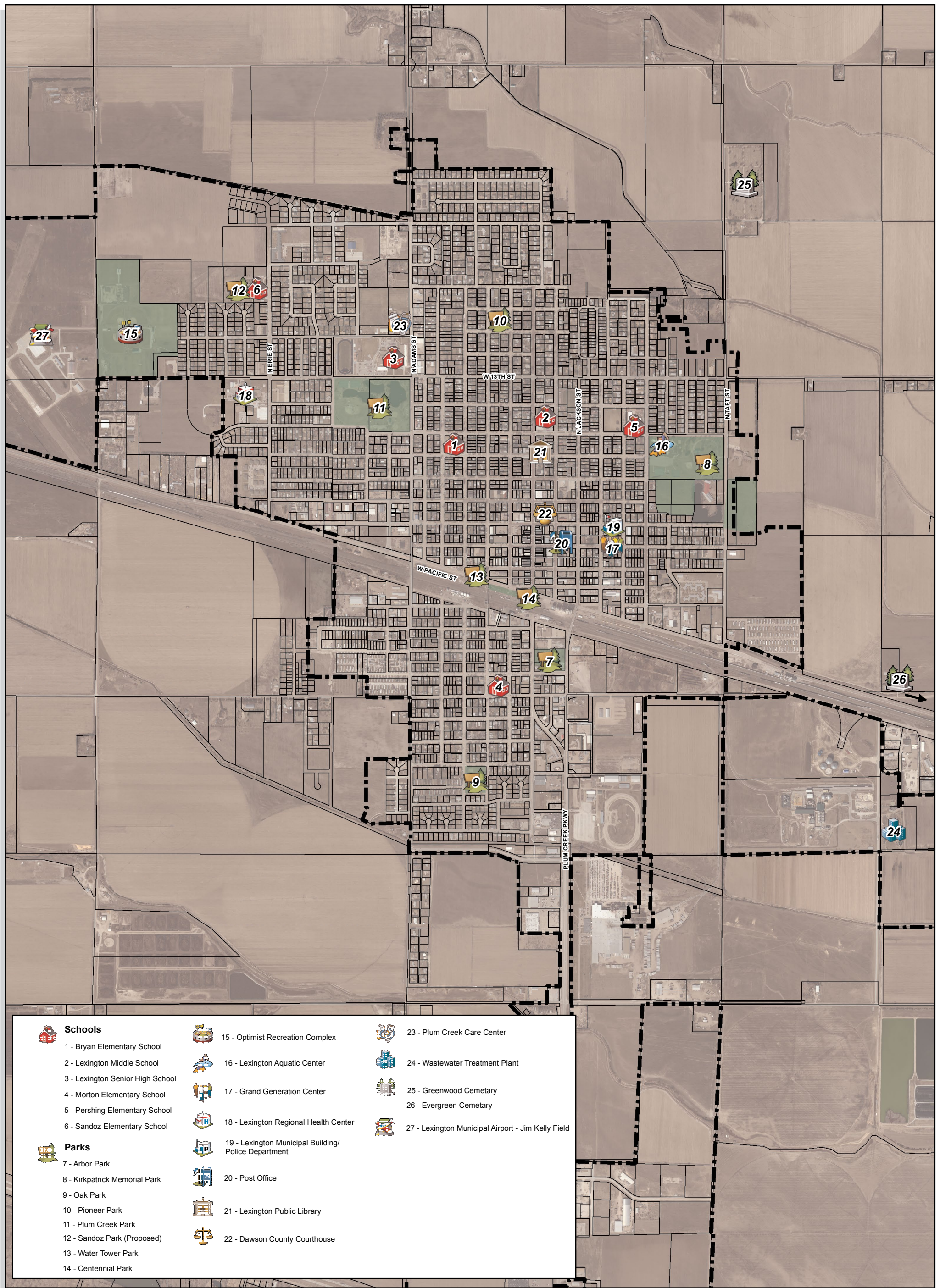
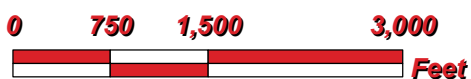


Figure 17: Public Facilities, Lexington

City of Lexington
Dawson County, Nebraska
Public Facilities Map



Created By: SMS
 Date: April 2013
 Software: ArcGIS 10
 File: 100999



This map was prepared using information from record drawings supplied by JEO and/or other applicable city, county, federal, or public or private entities. JEO does not guarantee the accuracy of this map or the information used to prepare this map. This is not a scaled plat.

Parks and Recreational Facilities

The *Profile* Section of “*The Lex-Plan 2013*” lists a short inventory of existing park and recreation facilities within Lexington and its two-mile jurisdiction. The *Achieve* Section of this plan contains a Parks and Recreation component that will serve as Lexington’s Park and Recreation Master Plan for further parks, recreation and open space. This portion of the plan will evaluate the existing facilities and make recommendations for all future facilities.

Parks within Lexington and Extraterritorial Jurisdiction

There are nine parks and outdoor recreational areas in or adjacent to the City of Lexington. These facilities are maintained by the City. The following table lists the parks and the amenities they contain:



Lexington Parks			
Name	Location	Acres	Amenities
Arbor Park	Hwy 283 and Maple	4	Skate park, picnic tables, shade, playground.
Centennial Park	US 30 and Washington	1.5	Walking trail, benches, memorial wall.
Kirkpatrick Memorial Park	11th and Taft	29.1	Aquatic Center (water slide, zero-depth, Olympic pool, splash pad), park shelter building, one ball field, tennis, playground, sand volleyball, picnic areas
Oak Park	Oak and Madison	3.2	One ball field, paved basketball court, playground, picnic areas
Optimist Recreation Complex	13th and Airport Road	35.9	Soccer, softball, legion ball, indoor hitting complex, concessions.
Pioneer Park	15th and Lincoln	2.1	Playground, picnic shelter.
Plum Creek Park	13th and Adams	23	Picnic shelter, tennis, playground, sand volleyball, ball field, disc golf, fishing, bocce ball, horseshoes, walking trail.
Sandoz Park	TBD- 19th and Erie		TBD
Water Tower Park	US 30 and Madison	0.3	Shaded picnic area, scenic flower garden.

Table 25: Parks Information, City of Lexington



Golf Courses

Lexington has four golf courses within 20 miles of the city.

Golf Courses	Location	Number of Holes
Overton Golf Course	Overton, NE	9 Holes
Lakeside Country Club	Johnson Lake, NE	18 holes
Cozad Country Club	Cozad, NE	18 holes
Hi-Line Golf Course	Bertrand, NE	18 holes

Source: www.golflink.com

Table 26: Golf Courses near Lexington

The Wild Horse Golf Club in Gothenburg is 30 miles west and rated as a top-10 course in the United States.

Educational Facilities

Public Schools

The Lexington School District currently has one pre-school, four elementary schools, one middle school and one high school.



Post Secondary Education

There are numerous educational opportunities in Nebraska for post-secondary education in just about any field of study. Table 28 lists a few of the larger enrollment institutions in close proximity of Lexington offering a wide variety of disciplines for their students.

School Name	Location	Enrollment	Capacity
Lexington High School	705 West 13th	820	950
Lexington Middle School	1100 North Washington St.	595	750
Sandoz Elementary School	1711 Erie St.	315	300
Pershing Elementary School	1104 North Tyler St.	273	350
Morton Elementary School	505 South Lincoln St.	358	500
Bryan Elementary School	1003 North Harrison St.	320	450
Early Learning Academy (pre-school)	1501 Plum Creek Parkway	230	275
Total		2,911	3,575

Table 27: 2012 -2013 School Year Enrollment, Lexington

Facility	Location	Enrollment	Miles from Lexington
Central Community College (Learning Center)	Lexington, NE	82	0
University of Nebraska - Kearney	Kearney, NE	7,100	35
Mid-Plains Community College	North Platte, NE	1,911	60
Central Community College (Branch Campus)	Grand Island, NE	302	82
Doane College (Branch Campus)	Grand Island, NE	192	83
Hastings College	Hastings, NE	1,112	94
Central Community College (Branch Campus)	Hastings, NE	934	98
University of Nebraska - Lincoln	Lincoln, NE	24,207	166

Table 28: Colleges and Universities in the Lexington Area

Lexington

Fire and Police Protection

Fire and Rescue

The Lexington Fire Hall is located at 606 North Tyler Street. This facility is the home for the Lexington Volunteer Fire Department, and is shared with the Lexington Rural Fire District.

The LVFD currently has 40 volunteers, and operates 11 fire and rescue vehicles. The services offered include fire suppression and medical rescue operations to both city and rural calls for service. Along with the LRFD, the service area currently is 455 square miles.



Law Enforcement

The Lexington Police Department is located at City Hall at 406 East 7th Street. Office hours are Monday through Friday, 8:00 a.m. to 5:00 p.m., and officers are on call 24 hours a day, seven days a week. The Lexington Police Department is currently budgeted to fund 18 sworn officers.

Officers are actively deployed among the city to ensure citizens are aware of their presence. Officers often drop by area schools throughout the day and attend after school functions such as sporting events in the evening to ensure the safety of all participants.

Officers leverage their numbers along with technology to better serve the citizens of Lexington. The department recently purchased iPads to better serve the public as these devices allow officers the opportunity to communicate with citizens whose primary language is not English. Aside from this, the iPads allow officers better flexibility while interacting with the public and conducting training.



| PROFILE |

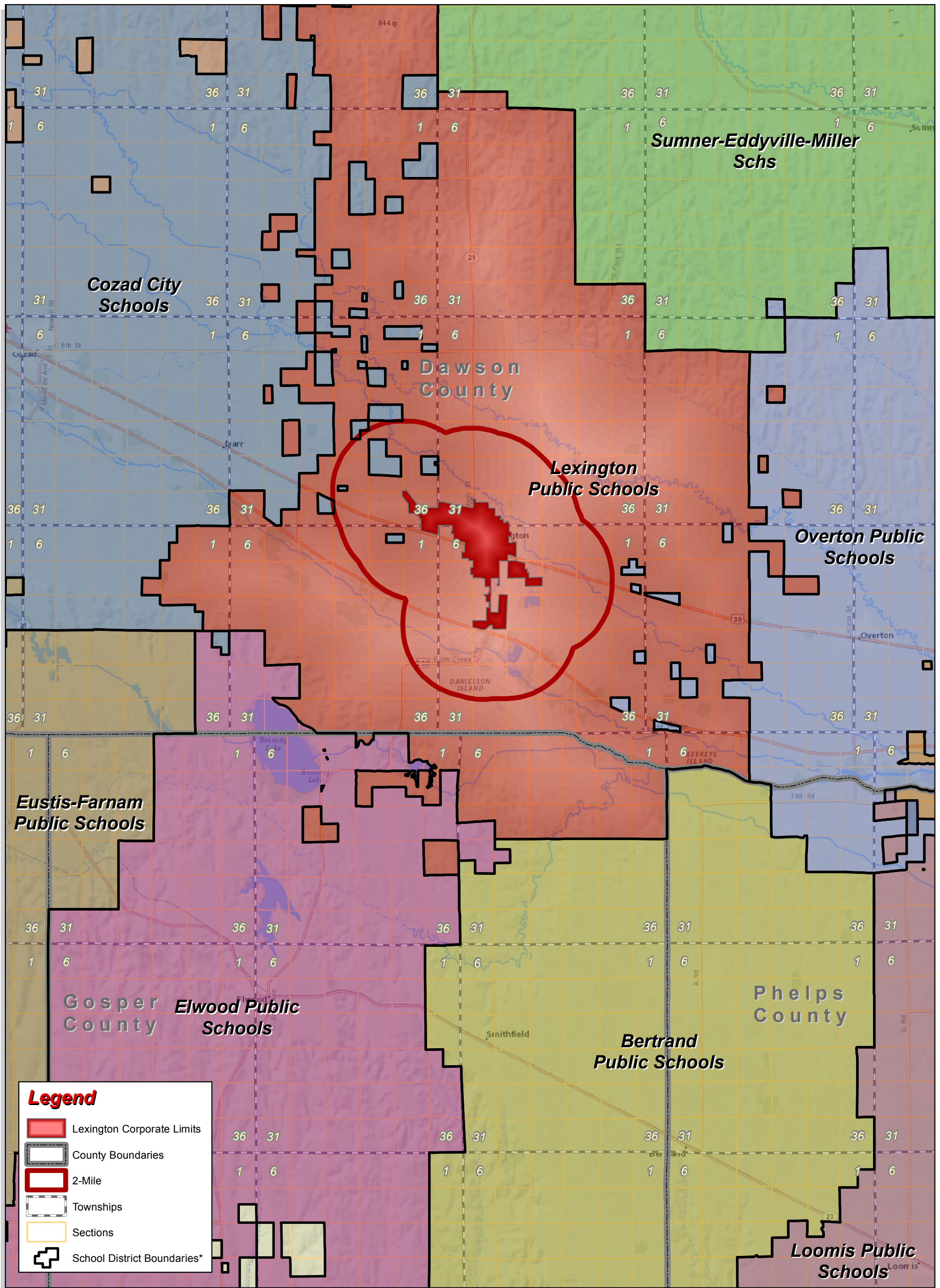
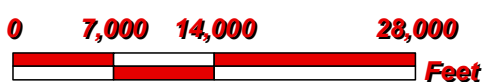


Figure 18: School Districts, Lexington area

City of Lexington
Dawson County, Nebraska

Area School Districts Map



Created By: SMS
 Date: April 2013
 Software: ArcGIS 10
 File: 100999



This map was prepared using information from record drawings supplied by JEO and/or other applicable city, county, federal, or public or private entities. JEO does not guarantee the accuracy of this map or the information used to prepare this map. This is not a scaled plat.

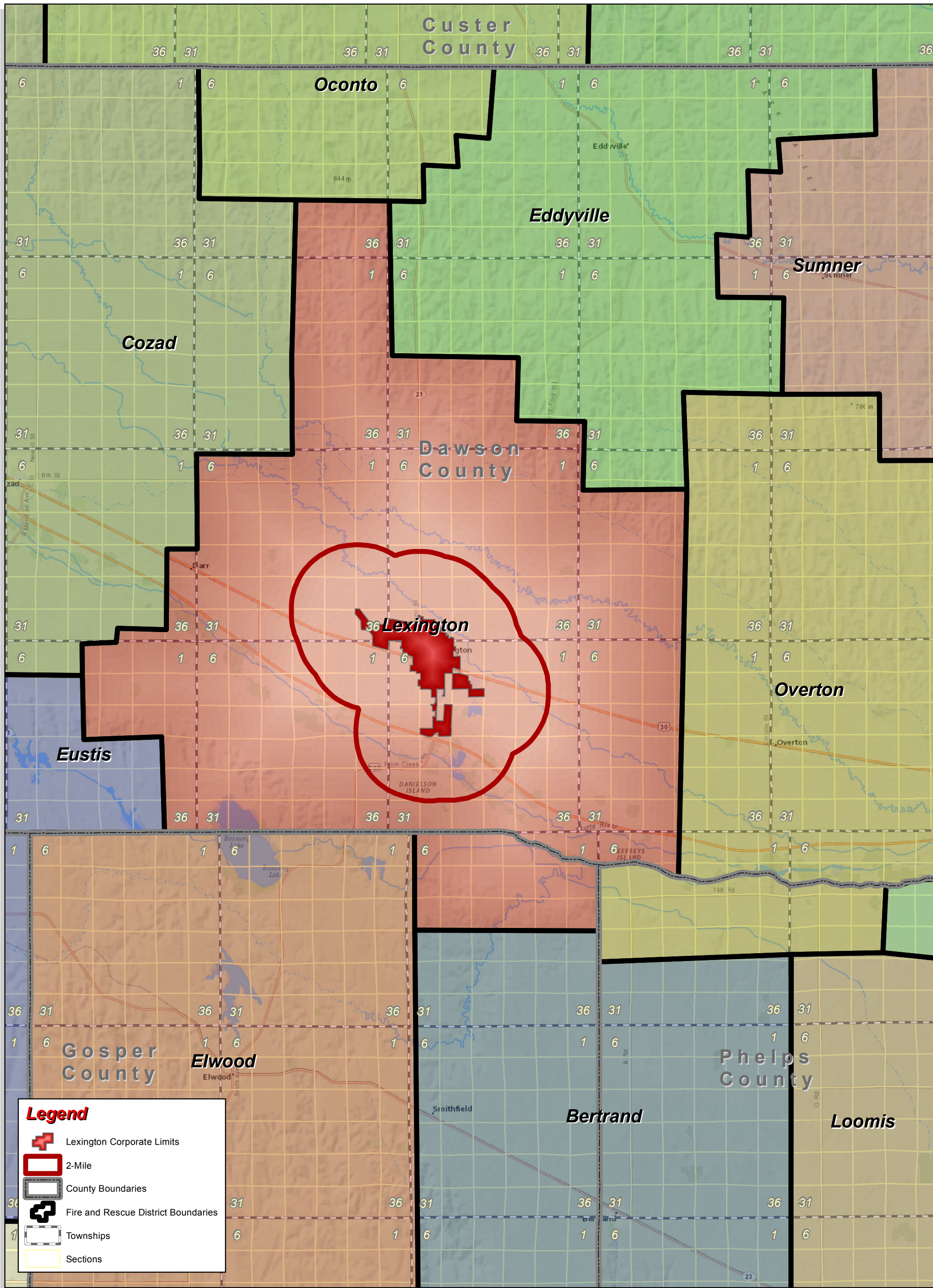
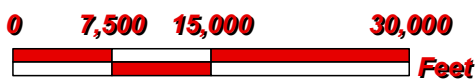


Figure 19: Fire and Rescue Districts, Lexington area

City of Lexington
Dawson County, Nebraska
Fire and Rescue Districts Map



Created By: SMS
 Date: April 2013
 Software: ArcGIS 10
 File: 100999



This map was prepared using information from record drawings supplied by JEO and/or other applicable city, county, federal, or public or private entities. JEO does not guarantee the accuracy of this map or the information used to prepare this map. This is not a scaled plat.



City Buildings

Public Library

The library is located at 907 N. Washington Street. This 18,500 sq. ft. facility was built in 2005 and comprises stacks, study rooms, and two large conference rooms. The library is open daily for a total of 68 hours each week. The library provides service to the residents of Lexington and by contract to nonresident borrowers from rural Dawson County for a \$5 membership fee. The library staff includes five full-time employees and four part-time employees.

In the 2010-2011 statistical report, the Library’s collections included 36,647 books, 107 periodical subscriptions, and many media items. The library has twenty-four public access computers for public use. These computers were provided in part through a grant provided by the Nebraska

Library Commission. Digital services include on-line catalog access, internet access, general application software such as word processing, and a number of on-line databases/resources.

The Lexington Public Library provides a number of services directed toward special populations and interests. Children’s services include two story time groups; one designed specifically for home-schooled students. Teens are offered a distinctive collection of reading materials targeted to their interests. One very unique offering is its collection of cake pans. These variously shaped cake pans are made available for patrons to check out and return when finished. Their collection is both extensive and varied. Several other programs offered by the library include a monthly book club, tax forms and help through

the Volunteer Income Tax Assistance (VITA) program, book delivery for the home-bound, and the use of the national Interlibrary Loan program. The library is also the meeting place for the Lexington Genealogical Society.

The Lexington Public Library is operated and supported by tax funds as well as private contributions with the mission to “extend quality service to area residents.” There is a five member Library Board of Directors that provides oversight for the operations of the Library. The library works with the “Friends of the Library” group, which provides volunteer time and fundraising assistance. Donations are managed by the Lexington Community Foundation and are used to enhance the collection and other specialized programs.



City Hall

Lexington City Hall is located at 406 E 7th Street and was originally constructed in 1969. There was recently an addition to the building completed in 2010. In addition to the Police Department, offices located at City Hall include the City Manager’s Office, City Clerk, Building and Zoning Department, and the Utilities Department.

City Maintenance Facilities

The Lexington Community Services Building is located at 801 West Vine Street. This facility houses the Public Works department for the city which manages the installation, repair and maintenance of the City’s 170 lane miles of streets, water and sewer systems, eight parks and two cemeteries. This site is also where citizens of Lexington can obtain wood chips and compost.

Communication Facilities

Service Providers

Service Providers	Cable/Satellite Television	Telephone	Internet
Charter	X	X	X
Direct TV	X		
Dish Network	X		
CenturyLink		X	X

Table 29: Private Service Providers, Lexington Nebraska

Newspaper

Listed below are the various newspapers serving the residents of Lexington:

Lexington Clipper-Herald (bi-weekly)
Kearney Hub
North Platte Telegraph
Tri-City Tribune (weekly)
Que Pasa (monthly)

Television

KNOP – NBC Station (Channel 2)	KGIN – CBS Station (Channel 11)
KLNE – PBS Station (Channel 3)	KHGI – ABC Station (Channel 13)
KHAS – NBC Station (Channel 5)	KTVG – FOX Station (Channel 17)
KWNB – ABC Station (Channel 6)	
Source: www.dtv.gov	

Table 30: Lexington Television Stations

Radio

KLNE 88.7 FM	KSYZ 107.7 FM	KCNI 1280 AM
KRVN 93.1 FM	KFRM 550 AM	KBRL 1300 AM
KLIQ 94.5 FM	KXSP 590 AM	KGFW 1340 AM
KBBN 95.3 FM	KMMJ 750 AM	KNGN 1360 AM
KMTY 97.7 FM	KXXX 790 AM	KUVR 1380 AM
KKPR 98.9 FM	KRVN 880 AM	KOOQ 1410 AM
KHZY 99.3 FM	KOGA 930 AM	KRGI 1430 AM
KROR 101.5 FM	KJLT 970 AM	KXPN 1460 AM
KRNY 102.3 FM	KMMQ 1020 AM	KKAN 1490 AM
KKJK 103.1 FM	KNLV 1060 AM	KQNK 1530 AM
KCVN 104.5 FM	KHAS 1230 AM	KAMI 1580 AM
KQKY 105.9 FM	KODY 1240 AM	

Source: www.radio-locator.com

Table 31: Lexington Radio Stations

Health Facilities

Hospital

Lexington Regional Health Center

This facility, serving the community since 1976, has continued to expand and grow since its beginnings. It now holds the state trauma designation and is considered a Critical Access Hospital by the state of Nebraska. This hospital serves the city of Lexington and the region around it through its many specialty departments and services. The varied types of services include; obstetrics, radiology, physical rehabilitation services, occupational and speech therapy, and emergency services. Another specialty service offered by the hospital is its visiting physicians program. Physicians from area cities visit the hospital on a weekly, bi-weekly, or monthly schedule. The specialties represented include; cardiology, endocrinology, general surgery, neurology, oncology, and orthopedics.



Clinics

Urgent Care

This urgent care clinic is owned and operated by the Lexington Regional Health Center. It was built adjacent to the hospital and provides a lower cost alternative to emergency room visits. This facility treats common conditions including; cuts, burns, common colds and infections, and physicals.

Plum Creek Medical Group

This family clinic is located near the Lexington Regional Health Center at 1103 Buffalo Bend. Within this facility, they also provide outpatient behavioral health services to children and adolescents with a variety of behavioral health concerns.



Independent and Assisted Living Centers



Park Avenue Estates

This Assisted and Independent living facility offers 53 assisted and 23 independent living apartments. One and two bedroom apartments are available along with restaurant style dining. This facility has been in operation for 20 years and has become a part of the local community by providing avenues where residents interact with members of the community. This facility accepts Medicaid and private pay.

Plum Creek Care Center

This Skilled Nursing and Assisted Living facility has been in operation for more than 35 years. It consists of 66 skilled nursing rooms and 29 assisted living rooms. It accepts Medicaid, Medicare and private pay. Some of the additional assets of this facility are; adult daycare, in-house therapy, respite care, and an Alzheimer's support group.

Shackley Retirement Village

Among other benefits, this Independent Living facility boasts close proximity to the Lexington Regional Health Center. It offers 18 one and two bedroom apartments. Along with housing, residents of the Shackley community receive memberships to the community health and fitness center. Other services offered includes laundry services, garage rental and full housekeeping services.



PROFILE

“The Lex-Plan 2013”

Public Utilities

The City of Lexington currently provides the following public utilities services to its residents:

Water System

The City of Lexington’s water system consists of more than 48 miles of 2” to 12” diameter water mains, one 400,000 gallon and one 1,000,000 gallon elevated water storage tanks, and twelve municipal wells. The combined production from the 15 wells is 9,000 gpm. The water distribution system is comprised primarily of cast iron and ductile iron mains with a small quantity of PVC mains. There are approximately 12.6 miles of 10”, 12”, and 16” diameter ductile iron mains that provide the distribution network for the smaller 4”, 6”, and 8” diameter interior mains. The system presently serves approximately 3,700 customers both inside and outside the corporate limits.

Wastewater Collection and Treatment

The City of Lexington’s sanitary sewer collection consists of 6” diameter pipe all the way up to 42” diameter sewer pipes. There are presently five sewage pumping stations within the collection system that lead to a trickling filter sewage treatment system. Planned improvements are to upgrade the current system to an activated sludge system.

Solid Waste Collection

Trash service is coordinated by the city and is billed to customers along with electric services. The city then outsources this service to Dan’s Sanitation, a private sector contractor.

Electric Power

The City of Lexington operates its distribution system, sells electricity at retail, and purchases wholesale from Nebraska Public Power District.



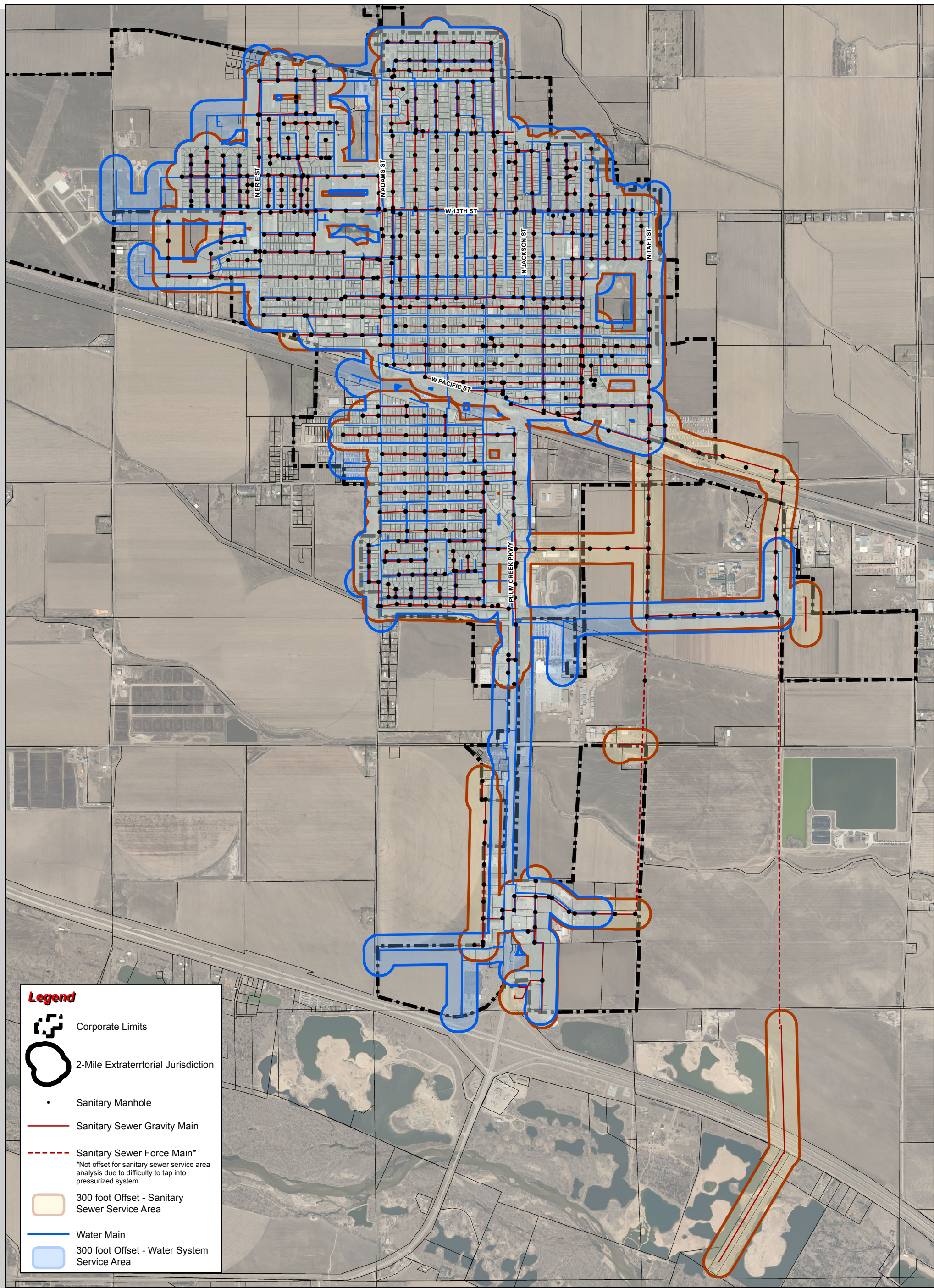
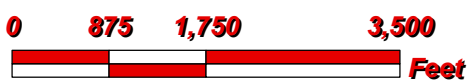


Figure 20: Utility Service, Lexington

City of Lexington
Dawson County, Nebraska
Utility Service Area Map



Created By: SMS
 Date: April 2013
 Software: ArcGIS 10
 File: 100999



This map was prepared using information from record drawings supplied by JEO and/or other applicable city, county, federal, or public or private entities. JEO does not guarantee the accuracy of this map or the information used to prepare this map. This is not a scaled plat.